

ANNUAL REPORT

1984-1985

Harold L. Votey, Jr.  
Director

COMMUNITY AND ORGANIZATION RESEARCH INSTITUTE

University of California, Santa Barbara

August 22, 1985

COMMUNITY AND ORGANIZATION  
RESEARCH INSTITUTE

Staff

Harold L. Votey, Jr., Director  
Perry Shapiro, Associate Director  
Terence R. Smith, Associate Director  
Barbara Hagen, Administrative Assistant  
Jeanie Cornet, Principal Clerk  
Joan Dandona, Senior Word Processor  
Bee Hanson, Senior Word Processor

Advisory Committee

G. Wesley Johnson, Chairperson (History)  
Allen Gersho (Electrical and Computer Engineering)  
James Pellegrino (Graduate School of Education)  
Jon Sonstelie (Economics)  
M. Stephen Weatherford (Political Science)  
Madeline Jackson (Graduate Student Representative)

COMMUNITY AND ORGANIZATION RESEARCH INSTITUTE  
ORGANIZATION CHART

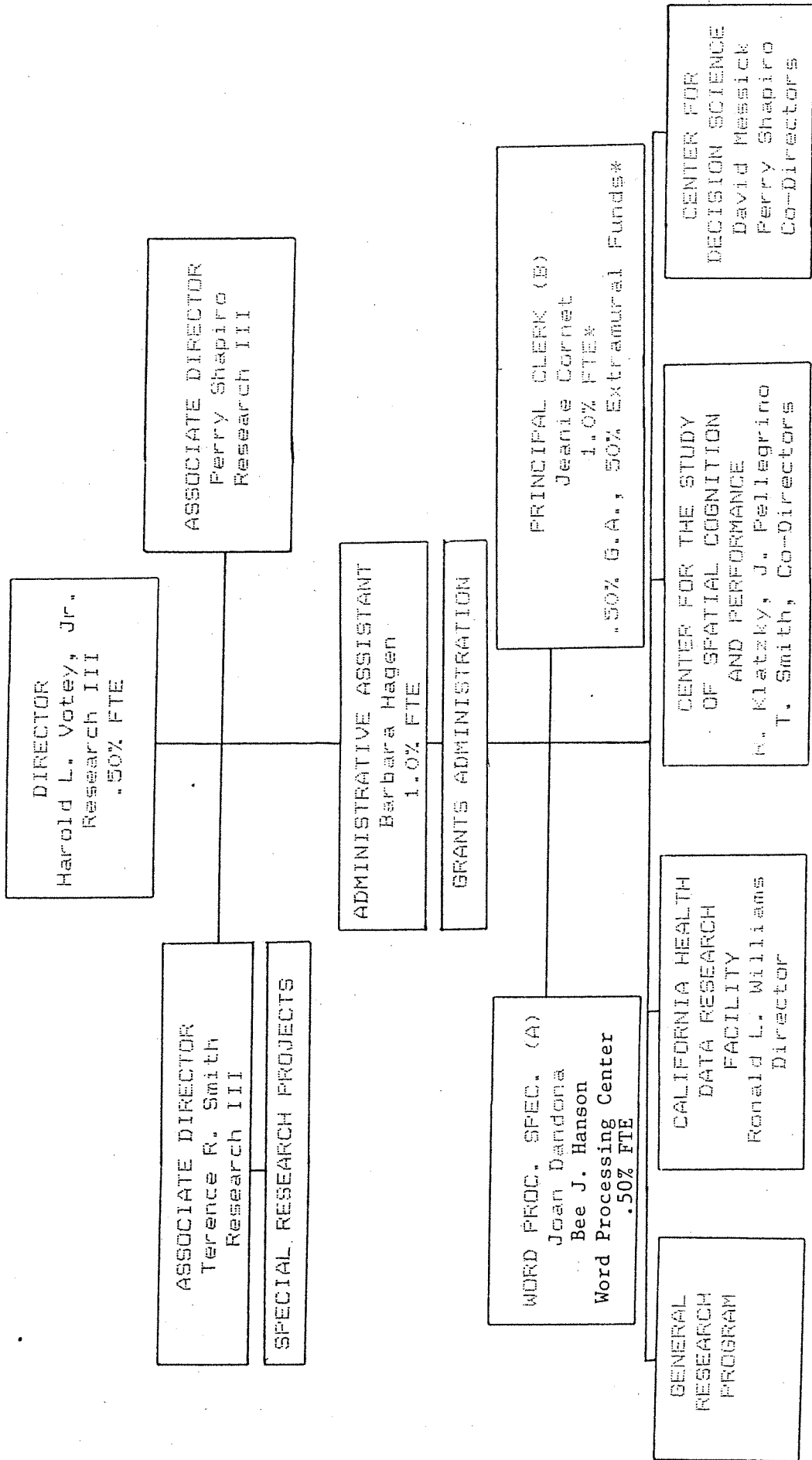


TABLE OF CONTENTS

	<u>Page</u>
THE DIRECTOR'S STATEMENT . . . . .	1
SUMMARY OF HIGHLIGHTS . . . . .	8
RESEARCH IN PROGRESS . . . . .	11
OTHER ACADEMIC ACTIVITIES . . . . .	16
PUBLICATIONS . . . . .	19
PAPERS COMPLETED, SUBMITTED OR IN-PROGRESS . . . . .	22
PAPERS PRESENTED . . . . .	24
PUBLIC SERVICE . . . . .	27
EXPENDITURES - EXTRAMURAL . . . . .	29
EXPENDITURES - INTRAMURAL . . . . .	31
STATISTICAL SUMMARY . . . . .	32
APPENDIX A	
A-1 EXTRAMURAL RESEARCH ACTIVITY . . . . .	34
A-2 INTRAMURAL RESEARCH ACTIVITY . . . . .	40
APPENDIX B-1	
(1-a) UCSB ACADEMIC STAFF ENGAGED IN RESEARCH . . . . .	42
(1-b) PARTICIPATION FROM OTHER UC CAMPUSES, OTHER INSTITUTIONS, AND INDUSTRY . . . . .	44
APPENDIX B-2	
(2-a) EMPLOYEES ON UNIVERSITY FUNDS . . . . .	46
(2-b) EMPLOYEES ON NON-UNIVERSITY FUNDS . . . . .	48
APPENDIX B-3 CURRENT SPACE ASSIGNMENTS . . . . .	51

## THE DIRECTOR'S STATEMENT

The 1984-85 fiscal year has been an outstanding one for CORI in terms of extramural funding. On the basis of grants for which we had been notified of approval prior to June 15, awards amounted to \$1,093,692 from public and private grantor agencies plus \$32,000 of funds solicited directly from private industry in 16 individual gifts, for a total of \$1,125,692. Of these funds \$484,855 did not achieve the legal status of grants until July 1 or later, even though funding begins officially on or before that date. Defined on the basis of expenditure approved, we can claim an increase in grants awarded of 22.9% over the previous fiscal years and the highest level of grant activity in CORI's history. Again, the gain has been a consequence of increases in the size of grants, rather than in numbers.

### CORI'S SCOPE IN INTERDISCIPLINARY RESEARCH

From the outset, CORI has been charged to "serve as a major resource for basic research in the social sciences with faculty participation in interdisciplinary research." The charge is two-dimensional. CORI has, from its inception, worked to expand opportunities for clients to succeed in basic research. At the same time considerable effort continues to be expended to encourage interdisciplinary involvement. The latter is the more difficult task.

Table I indicates the time path of participation in funded research by faculty, students, and professional researchers. The trends inherent in the table are reflected in Figure 1 that depicts the path of annual grant awards and number of projects supported. These data confirm the continuation of a greater than 20% annual growth in extramurally supported research in CORI.

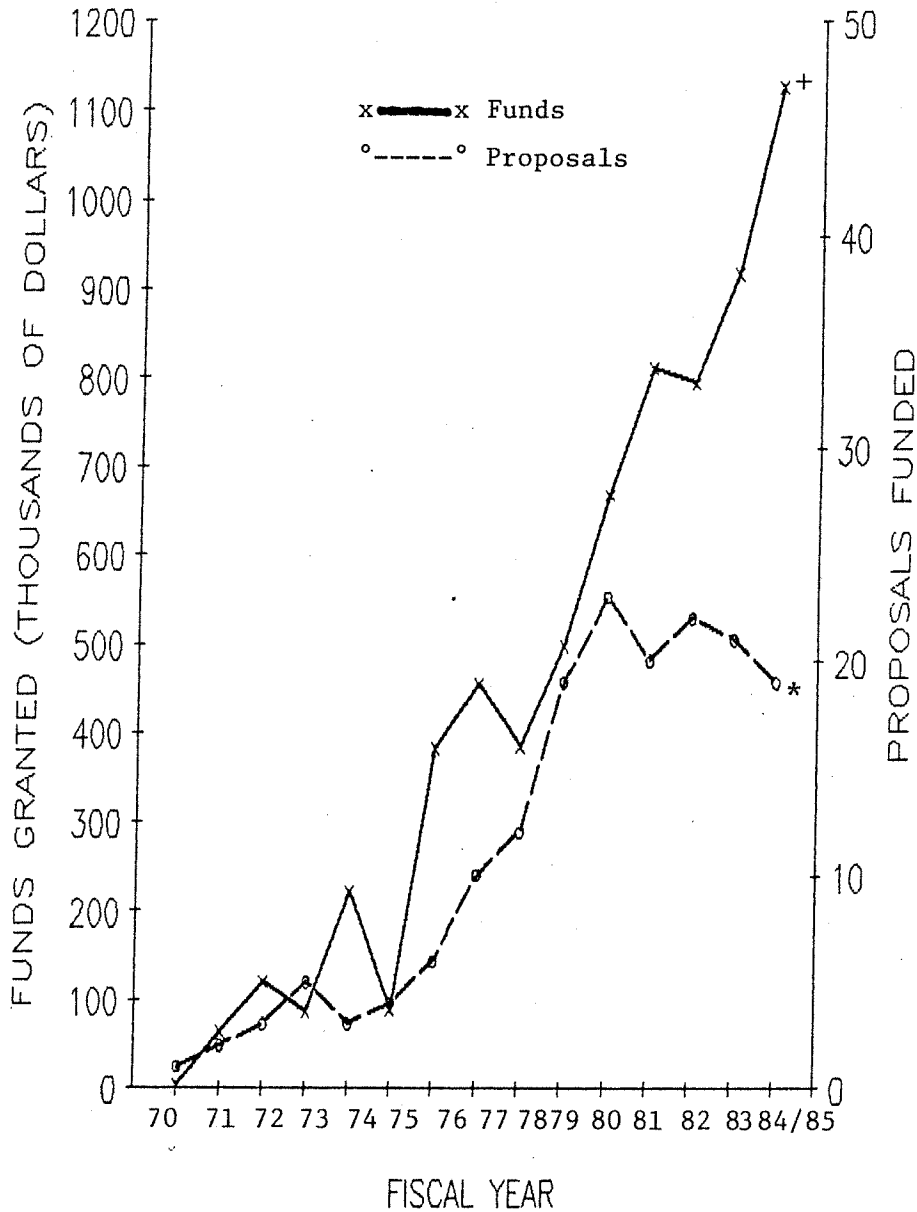
We in CORI feel that we can be justly pleased with such a growth record, but while this record reflects a continued support by CORI clients over the years, it must be recognized that most of the credit goes to the clients themselves. The ultimate key to success is to be able to field good proposals and this requires faculty and research staff who are capable researchers able to communicate their abilities to deal with challenging research questions.

The role of CORI's staff is to create an atmosphere in which the difficulties of proposal submission and grants administration are minimized. Further, we try to provide space and services that make the research itself progress more easily. Additionally, we must work continuously to bring our services to the attention of researchers with new ideas who haven't been making use of our services. And we need to get across to potential proposal writers the possibilities for enriching proposals and the ultimate research products by involving researchers from other disciplines so that important questions regarding the subject are not overlooked. CORI's success in becoming more of an

Table 1  
PERSONNEL AFFILIATED WITH C.O.R.I.

	<u>79/80</u>	<u>80/81</u>	<u>81/82</u>	<u>82/83</u>	<u>83/84</u>	<u>84/85</u>
<b>A. <u>Extramural Funds</u></b>						
Faculty	15	14	32	36	33	26
Professional Researchers	2	3	6	5	3	3
Specialists	0	1	2	3	2	2
Postgraduate Researchers	4	9	10	2	8	5
Graduates	47	19	27	23	22	32
Undergraduates	7	9	8	6	15	9
Fellowships	9	7	4	4	7	6
<b>B. <u>University Funds</u></b>						
Administrative	3	3	5	5	3	4
Technical	4	2	2	1	1	13
Clerical	4	4	8	2	7	2
Professional						1

Figure 1 COMMUNITY & ORGANIZATION RESEARCH INSTITUTE  
 Historical Pattern of Funds Granted  
 And Number of Successful Proposals \*



\* Not including private and corporate gifts or intramural funds for special projects and programs

+ Based on start date rather than contract award date

interdisciplinary operation is illustrated in Table 2. While the table indicates the range of disciplines involved, it also reveals that, while a broad cross-section of disciplines is involved in the research grants administered through CORI, only about 45% of the subjects for research are being investigated on an interdisciplinary basis. While this is a reasonably high proportion for university research in general, the numbers show that there remains a substantial proportion of activities that might be broadened by involving the perspectives of other disciplines.

That the average size of grants has been increasing substantially (and more rapidly than the rate of inflation) is a revelation that the perceived quality of the research proposals submitted through CORI has been improving. This reflects favorably on the very effective group of CORI clients who continue to channel their efforts through CORI.

#### THE SCOPE OF CORI RESEARCH

The scope of CORI research has been expanding over the years in terms of faculty and student participation, as indicated in Table 1. The breadth of present activities is illustrated in Table 2. The potential is broader still as one can see by perusing the scope of proposals submitted in Sections A-1 and A-2.

Such traditional areas of research as water involve Lloyd Mercer, W. Douglas Morgan, and Margriet Caswell. Walter Mead continues to be involved in energy research and George Borjas' research on labor migration and labor discrimination advances to new questions on a continually challenging topic. Llad Phillips along with Harold Votey continue to investigate issues relating crime and labor market opportunities with a new kind of data and different estimation techniques than they have used in the past. Perry Shapiro along with Daniel Rubinfeld of the Boalt School of Law and Theodore Bergstrom of the University of Michigan make substantial progress and acquire new funding for their studies of demand for public goods. Ronald Williams remains one of the more successful clients in terms of continuity and magnitude of support for his work on the factors contributing to neonatal and perinatal survival and his more recent development of data systems for the collection of public health data on which such research may be based. The work of Warren Hollister on his computer data base from the Domesday Book and with the help of Robin Fleming, both in history, continue to be supported by funds from the UCSB Foundation.

An important new area of research is being directed by Daniel Botkin for the California Department of Fish and Game and the State Assembly. His focus is on the ecological systems relating to the Mono Lake Basin and the potential impacts of exporting water from that basin for municipal water supplies. Another new area of research is that by William Bielby just getting underway to study men's and women's competing commitments to work and family.



Table 2  
 CORI Research Projects and Disciplines Involved in 1983-84  
 (Discipline Involvement is defined on basis of personnel being based in or having formal training in discipline.)

Research Area:	Disciplines:	Anthropology	Bio.-Science	Chicano Studies	Computer Science	Economics	Education	Envr. Studies	Geography	History	Law	Physics	Poli. Science	Psychology	Sociology	Spanish	Math-Statistics
Artificial Intelligence																	
Cognitive Science																	
Child Health Data Base			X														
Consensus Among Nations					X	X											
Crime Studies						X							X				
Crime Control Theory						X											
Data Base Management						X											
Drunk Driving Behavior & Control					X	X											
Econometric-Sociometric Workshop						X											X
Expert Systems						X											
Energy Studies						X											
Geographic Information									X								
Health Economics			X			X											
Health Information Systems			X		X	X											
History Using Computer Technology As a Tool										X							
Insurance						X											
Mexican Economic Growth & Environmental Impacts						X											
Labor Markets						X											
Migration						X											
Mono Lake Biology			X			X											
Phloem Transport			X			X											
Public Finance			X			X											
Public and Oral History																	
Spatial Behavior & Knowledge							X			X							
Water Resource Use																	
Work & Family						X											X

An approach to funding that is new to CORI has been used by James Cronshaw, who has had remarkable success in his conference on Phloem Transport by seeking financial support from private sector firms whose activities have bearing on this important research. His success in the direct approach suggests that some other researchers may be missing a bet in not taking full advantage of the potential for broader support by self-interested firms.

#### CHANGING DIRECTIONS IN CORI

Probably the most active area within CORI in terms of proposals generated over the past year relates to cognitive and spatial concepts. Such work potentially involves learning, robotics, the ability to function in a spatial environment, and basic supportive research in a number of areas such as data base management, expert systems, and artificial intelligence. Thus far, proposals have been generated by computer scientists, faculty in education, geography, and psychology. Planned research will also likely link to work being conducted on campus in robotics and to such public health concerns as the development of aid to the blind for operating in complex spatial environments.

Both intramural and extramural funds have been acquired in this past academic year to promote the Center for the Study of Spatial Cognition and Performance that is the focal point for these broadly conceived research interests. Substantial support has come from the Academic Senate for computer hardware for conducting experiments in cognition. Campus funds have also provided for a LISP machine, a sophisticated computer to facilitate the development of computer software for the aspects of artificial intelligence important to a variety of the projects anticipated and getting underway. Faculty who have been directly involved with this development are Roberta Klatzky in Psychology, James Pellegrino in the Graduate School of Education, and Terence Smith in Geography and Computer Science. Sally Doherty, a post-doctoral student in psychology, is employed full-time on this research. Others involved in related research are Ralph Dubayah and Donna Peuquet in geography. If proposals submitted and the initial responses of funding agencies are an indication, these activities promise to be the most productive in CORI in attracting extramural support. The long run expectation is that cognitive studies will become an important academic program, initially at the graduate level, as well as a promising area of research.

Another new area for CORI that is not so fully developed as cognitive science, but that promises to be an important new area of activity for the campus is decision science. Activities directed by David Messick in psychology and Perry Shapiro in economics hold promise for the development of an academic program in an area that encompasses both their disciplines and will likely involve others as the program becomes established. The new program envisions both the development of theory and

experimentation to broaden our understanding of decision processes and to train students in techniques for more effective management of decision making.

## CORI SERVICES

Providing services to research clients continues to be the justification for CORI's existence. Most important is assistance in promptly getting out proposals to meet agency deadlines, often a seemingly difficult task with the many hurdles that must be overcome by prospective researchers. CORI has yet to miss a deadline when there has been any reasonable hope of completing word processing, budgets, and the acquisition of required approvals for submission because we realize that efficient proposal submission is the necessary first condition for any researcher to be a successful CORI client. This work is supervised by Barbara Hagen, who can provide help on budget submission requirements and all aspects of proposal submission. She is ably assisted by Jeanie Cornet, Joan Dandona, and Bee Hanson for word processing and copying. Jeanie Cornet maintains a computerized system of accounting to assure that grant financial records are up to date and easily accessible.

A major concern of most researchers is to be able to acquire space in which the research can be conducted. CORI maintains excellent space for research assistants and provides help in acquiring space to most unique grant requirements. In addition, CORI can provide space for research seminars, site meetings with funding agencies and for staff meetings of research teams. Two seminar type meeting rooms are available in North Hall plus the Pellish Room, a deluxe meeting space for important visitors from off campus and for special meetings for the planning and initiation of multidisciplinary projects.

An important aspect of proposal submission, grants management and research reporting is the facility to get out printed materials quickly and easily. CORI maintains a high quality word processing operation with a Tandy Model 16 computer and printers. That machine is a multiuser machine that can simultaneously be used to maintain CORI's accounts. Additionally, CORI has acquired an IBM PC/AT that is being used for developmental work and that with a UNIX operating system ultimately will be used as a backup to the XENIX system presently used for word processing. It is expected that this will be coupled with a laser printer to provide quality output for research papers and reports. Experimentation is planned to link the AT to PC's for combining printing and pooling of software to facilitate improved scientific computing.

## SUMMARY OF HIGHLIGHTS

### Major Events

In 1984-85 two research centers were established under the auspices of CORI. The first, the Center for the Study of Spatial Cognition and Performance (CSSCAP) is under the direction of Roberta Klatzky (Psych), James Pellegrino (Psych and Grad School of Ed), and Terence Smith (Geog and Comp Sci). The function of CSSCAP is to provide a focus for interdisciplinary research on problems concerning spatial perception, spatial cognition and spatial performance as they arise in connection with both people and machines. Presented this year was a series of seminars with distinguished speakers from universities nationwide and private industry.

The Decision Science Center was also established under the direction of David Messick (Psych) and Perry Shapiro (Econ). The focus of this center is on research in individual decision making, group decision making, macro versus microprocesses, mathematical foundations of decision theory, conflicting preferences, bargaining, negotiations, and applied decision analysis. The goals of the center are to develop proposals to support both research and curriculum development. Distinguished speakers in a series of seminars presented this past year attracted a large interdisciplinary audience.

JULY 1984

#### Proposals Funded

RL Williams, "Maternal and Child Health Statistical Data Base: Development, Application, and Dissemination." Calif. Health & Welfare Agency, \$22,700.

TR Smith, R Dubayah. "Constructing Geographic Expert Systems with Learning Capabilities." NASA/Ames, \$13,500.

L Phillips, H Votey. "Male-Female Crime Rate Differentials: A Study of Effects of Causal and Control Forces." NSF, \$55,710.

WD Morgan, L Mercer. "The effectiveness of Alternative Water Rationing." Water Resources Center, \$9,500.

#### Travel

Harold Votey attends the National Council for Crime Prevention Conference in Stockholm, Sweden to present two seminars: 1) on the results of his research on crime that applied related U.S. data to the effects of arrests and sanctions on drunken driving accidents in Sweden; and 2) on the results of his research on an econometric model of crime for Sweden. In addition, he visited Brighton, England to participate in the International Workshop on Methodology of Modelling Road Accident and Injury Patterns.

AUGUST 1984

#### Proposals Funded

P Shapiro, D Rubinfeld, T Bergstrom, "Community Choice and the Demand for Public Goods." NSF, \$45,125.

SUMMARY OF HIGHLIGHTS (cont'd)

- SEPTEMBER 1984 Proposals Funded  
TR Smith, D. Peuquet, J Estes, "Constructing a Self-Modifying Knowledge Based Geographical Information System." NSF, \$5,000.
- OCTOBER 1984 Breakthroughs in Research  
R. Klatzky, J Pellegrino, and T Smith initiate a project to develop a conceptual and computational model of (1) configuring of the human hand for functional interaction with objects, and (2) the relationship between hand configuring and both lower-level visual perception and higher-level conceptual representations of objects and their functions.  
  
R Klatzky demonstrates that haptic object recognition, i.e., the identification of objects by touch, is highly accurate and very fast, and is a far more effective means of perceiving and learning about three-dimensional objects than is commonly supposed.
- DECEMBER 1984 Proposals Funded  
J W Pellegrino, "Computerized Assessment of Spatial Abilities." University of Washington, \$48,267.  
  
J Cronshaw, "International Phloem Transport Conference." US Department of Agriculture, \$3,000. NSF, \$5,000.  
  
Breakthroughs in Research  
R Slater demonstrates that demographic data (population distribution, migration mortality ...) are typically collected from discreet geographic units. The use of bicubic splines to smooth subdata have been investigated and results obtained allow one to predict the intensities of these population phenomena at geographic levels other than those for which the (primary) data have been collected. This can save the expense of additional surveys or census. Conture maps of the splines can be displayed revealing intensity features of the population data.
- JANUARY 1985 Proposals Funded  
RL Williams, "Automated Perinatal Information Systems." Public Health Service, \$129,831.
- APRIL 1985 Proposals Funded  
D B Botkin, HL Votey, "Research and Analysis to Satisfy AB 1614." California Department of Fish and Game, \$250,000.  
  
Travel  
W J Mead travels to Australia and gives eight lectures on the subject of Alternative Gas and Leasing Systems. In New Zealand he gives three lectures concerned with Alternative Timber Sales and Policies.
- MAY 1985 Travel  
L Phillips travels to Monterrey, Mexico at the invitation of the Universidad Autonoma de Nuevo Leon, Department of Economics, as as continuation of exchange efforts among the faculty of UANL and UCSB for the development of research projects.

SUMMARY OF HIGHLIGHTS (cont'd)

W J Mead travels to Bonn, Germany to attend the International Association of Energy Economists' Annual Meeting on OPEC as a Monopoly.

JUNE 1985

Proposal Funded

J Cronshaw, "International Phloem Transport Conference."  
Support from private contributions, \$32,000.

Travel

W J Mead travels to the Peoples Republic of China to present results of his research project on the US experience in oil and gas leasing, funded by a grant from UERG. In Beijing he gave a paper before the China Association for Science and Technology. In Shanghai, at the Shanghai branch of the Association for Science and Technology, he discussed "Alternative Oil and Gas Leasing Systems, which China might use for its offshore oil and gas resources.

G W Johnson visits France and England and hold conversations at the Institute of Contemporary History in Paris regarding a possible joint research project in community history.

Highlights in Research

G Wesley Johnson, principal investigator on a grant from NEH reports that five courses on Public Historical Studies were developed over the life of the grant: 1) "Graduate Seminar on Women and Public Policy in the Twentieth Century," Prof. Patricia Cline Cohen. 2) "History 110," Prof. Nancy Gallagher. This course covers medical systems, medical policies, and medical professionalism as they evolved in the twentieth century. As a result of this course, five hospitals in the Los Angeles area have written Public History Chairperson Carroll Pursell to inquire about their hiring interns from the Public Historical Studies Program to write histories of their medical institutions. 3) "Seminar in Legal History," Prof. Laura Kalman. This course covers the rise of the legal profession, changes in legal education, American constitutional law, and twentieth century American jurisprudence. 4) "Introduction to Public History, Prof. G. Wesley Johnson. This is a seminar course that centers on providing a definition of public history, how it developed in the 1970s as the demise of professional teaching opportunities became apparent, and in showing how the historical method can be applied to a number of situations outside the parameters of the university world. 5) "Professionalism and Professionalization," Prof. G. Wesley Johnson. This seminar course was designed to give historical and current background on the comparative development of a number of professions.

Marian Johnson, principal investigator on a grant from the Pearl Chase Foundation, completes research on the Beautification of Santa Barbara Historical Preservation, and completes a total of 67 taped interviews with persons who were central participants in one or more phases of the beautification movement, or who were in a position to have first hand information about the politics, issues, and plans of the movement. Dr. Johnson also completed a thorough search of archival materials deposited in the Pearl Chase collection in the campus library.

RESEARCH IN PROGRESS

Title: Maternal and Child Health Data Base: Development,  
Application and Dissemination  
Principal Investigator: Ronald L. Williams, Research Economist  
Associates: E. Clingman, Specialist  
K. Rust, Specialist  
C. Phibbs, Consultant  
Students: M. MacCauley, RA  
M. Hill, Data Processor  
S. Jacober, Data Processor  
T. Tran-Viet, Assistant  
Staff: J. Marinko, Computer Programmer  
Abstract: Application and development of the Maternal and Child Health  
Data Base will be continued and expanded.

Title: Automated Perinatal Information System  
Principal Investigator: Ronald L. Williams, Research Economist  
Staff: P. Chen, Sr. Computer Programmer  
Abstract: An automated vital statistics system (AVSS) has been  
L.A. County hospitals. Data is collected on pregnancy and  
labor and delivery complications in order to identify the  
sources of poor perinatal outcomes.

Title: Computerized Assessment of Spatial Abilities  
Principal Investigator: James Pellegrino, Research Psychologist  
Students: R. Abate, Research Assistant  
D. Alderton, Research Assistant  
T. McDonald, Research Assistant  
Abstract: Work on the development of a computerized battery of spatial  
ability tests are being conducted.

Title: The Effects of Alternate Pricing Policies on the Adoption  
of Innovative Irrigation Systems in California  
Principal Investigator: Margriet F. Caswell, Assistant Research Economist  
Students: R. Lathrop, Research Assistant  
Abstract: The final objective of this project is to estimate the impact  
of changing water prices on the volume of agricultural  
wastewater.

RESEARCH IN PROGRESS (cont'd)

Title: International Conference on Phloem Transport

Principal

Investigator: James Cronshaw, Research Biologist

Abstract: A conference bringing together scientists from around the world who specialize in phloem transport will be held at Asilomar, California from August 18-23, 1985.

Title: Domesday Book Database

Principal

Investigators: C. Warren Hollister, Research Historian  
Robin Fleming, Associate Specialist

Students: K. Mack, Postgraduate Researcher  
L. Helm, Research Assistant  
J. Zukin, Assistant  
Barbara Kargaard, Assistant  
Daly, M., Research Assistant

Abstract: Work on a comprehensive database for the Domesday Book, the record of William the Conqueror's great land survey of A.D. 1086, will be continued.

Title: Constructing Geographic Expert Systems with Learning Capabilities

Principal

Investigators: Terence R. Smith, Research Geographer  
Ralph Dubayah, Research Assistant

Abstract: Exploring machine learning as applied to geographic expert systems (GES) is the objective of this research.

Title: Knowledge Based Engineering for Data Base Management and Use

Principal

Investigators: Terence R. Smith, Research Geographer  
Donna J. Peuquet, Assistant Research Geographer  
John E. Estes, Research Geographer

Students: Chow, K., Research Assistant  
Gersho, M., Assistant  
Chen, C. Research Assistant  
Liu, Y., Research Assistant  
Solumanipau, I., Assistant  
Zhan, C.X., Postgraduate Research Geographer  
Agarwal, P., Research Assistant  
Joglekar, U., Research Assistant

Title: Optimum Insurance for People Who Don't Want Any

Principle

Investigator: John M. Marshall, Research Economist

Abstract: This project will study the disagreement between the theory of moral hazard and certain widely-believed propositions about disaster insurance and mitigation.



RESEARCH IN PROGRESS (cont'd)

Title: Creating a New Curriculum in Public History

Principal

Investigator: G. Wesley Johnson, Associate Research Historian

Faculty: Carroll Pursell, Research Historian

Students: G.V. Askew, Research Assistant

A. Kahn, Postgraduate Research Historian

G. Graves, Postgraduate Research Historian

E.F. Manchuelle, Research Assistant

P.R. Yew, Assistant

Abstract: In combination with the Graduate Program in Public History, this grant provides funds for curriculum development in order to strengthen the graduate program, create a new undergraduate emphasis, and provide the means for faculty to develop new courses and receive further training.

Title: Creating a New Professional Person: The Public Historian

Principal

Investigator: G. Wesley Johnson, Associate Research Historian

Faculty: Carroll Pursell, Research Historian

Abstract: A pioneering graduate program which aims at creating a new professional person: The Public Historian

Title: A Multilevel Analysis of U.S. Migration Flows

Principal

Investigators: Terence R. Smith, Research Geographer

Paul B. Slater, Associate Research Geographer

Students: M. Schwab, Research Assistant

Abstract: Utilization of internal migration flow data on a county-to-county basis for the effective modeling of U.S. migration patterns is the basis of this research.

Title: The Effectiveness of Alternative Water Rationing Schemes

Principal

Investigators: Lloyd J. Mercer, Research Economist

W. Douglas Morgan, Research Economist

Students: R. Lathrop, Postgraduate Research Economist

J. Bigley, Assistant

Abstract: Analyzing the potential of policy alternatives for improving nonstructural urban water demand management with focus on water conservation is the basis of this research.

Title: History of the Santa Barbara Beautification Movement

Principal

Investigator: Marian Ashby Johnson, Academic Coordinator

Professional: D. Stevenson, Laboratory Assistant

Abstract: Through a series of oral history interviews with persons who were involved in establishing policies that led to the beautification of Santa Barbara from 1920, a library of taped interviews will be created.

RESEARCH IN PROGRESS (cont'd)

- Title: Community Choice and the Demand for Public Goods  
Principal  
Investigators: P. Shapiro, D. Rubinfeld and T. Bergstrom, Research Economists  
J. Roberts, Postgraduate Research Economist  
Students: R. Burnett, R., Assistant  
J.R. Church, Research Assistant  
J. M. Doublet, Research Assistant  
B. Miller, Research Assistant
- Abstract: Empirical work done with data collected in surveys of voters in Michigan and Massachusetts will accomplish the task of estimating the demand for public goods (with particular emphasis on public education).
- Title: Evaluating Alternative Sanctions in an Individual Choice Model: The Case of Drunken Driving Part II  
Principal  
Investigators: P. Shapiro, Research Economist  
H.L. Votey, Research Economist  
Professionals: M. Schniepp, Assistant Research Economist  
Students: Burnett, R.L., Assistant
- Abstract: The objective of this research will be to derive information that will lead to more effective legislation, enforcement, and sanctioning polic to reduce the substantial losses attributed to drunken driving.
- Title: Male-Female Crime Rate Differentials: A study of Effects of Causal and Control Forces  
Principal  
Investigators: L. Phillips, Research Economist  
H.L. Votey, Research Economist  
Professionals: M. Schniepp, Assistant Research Economist
- Abstract: The focus of this research is on the factors, both causal and control, responsible for the changing crime rate differentials between men and women.
- Title: The Impact of Immigrants on the Earnings of Natives in the U.S. Labor Market  
Principal  
Investigators: George J. Borjas, Research Economist  
Students: Huang, WJ, Research Assistant  
L.D. Singell, Postgraduate Research Economist  
A. P. Williams, Research Assistant
- Abstract: The impact of the foreign-born on the earnings of the native-born in the U.S. labor market will be the focus of this research.
- Title: Sociological Aspects of Cleavage and Consensus Among Nations  
Principal  
Investigator: Seth Fisher, Research Sociologist  
Students: J. Iaocabellis, Assistant  
D. Solomon
- Abstract: Expansion of course, Soc 146/194.

RESEARCH IN PROGRESS (cont'd)

- Title: Research and Analysis to Satisfy AB 1614  
Principal  
Investigators: Daniel B. Botkin, Research Biological Scientist  
Harold L. Votey, Jr., Research Economist
- Abstract: California State Assembly Bill 1614, the Mono Lake Research Bill, requires a comprehensive analysis of the aquatic ecology, avifauna, air quality and hydrology of the Mono Basin. The primary purpose of this analysis is to aid the management of the Mono Basin.
- Title: Focus on Mexico and the U.S.: A Cooperative Business  
Principal Economist Training Program  
Investigator: Harold L. Votey, Jr., Research Economist  
Faculty: Llad Phillips, Research Economist
- Abstract: A program of technical, economic and cultural interchange with the Universidad Autonoma de Nuevo Leon, Monterrey, Mexico.
- Title: Generational Differences in Japanese Nationalists  
Principal  
Investigator: Haruhiro Fukui, Research Political Scientist  
Students: H.S. Park, Research Assistant
- Abstract: Surveys and analyzes the arguments put forth to substantiate or counter the assertion that expansion of Japanese military capabilities or roles would adversely affect the U.S. and/or other friendly countries.

OTHER ACADEMIC ACTIVITIES

A. Seminars

A series of colloquium presented by the Center for the Study of Spatial Cognition and Performance and jointly sponsored by the Departments of Computer Science, Psychology, and Geography were well attended by an interdisciplinary audience and generated a suitable intellectual climate for further development of collaborative research programs. Directed by Roberta Klatzky, James Pellegrino, and Terence Smith, the SCCAP Center presented the following speakers:

- January 18      Irving Biederman, Professor of Psychology  
State University of New York at Buffalo  
"Recognition-By-Components: A Computational  
Hypothesis of Visual Image Interpretation"
- January 25      Pat Langley, Professor of Information and Computer  
Science, University of California at Irvine  
and Executive Editor of Machine Learning  
"Learning in a Reactive Environment"
- February 19     Dr. Chris Brown, Chairman, Computer Science  
Department, University of Rochester, New York  
"The Evaluation and Use of Symmetry in Computer  
Vision"
- March 5          Dana H. Ballard, Computer Science Department,  
University of Rochester, Rochester, New York  
"Parameter Nets"
- March 6          Dr. Dana H. Ballard, Computer Science Department  
University of Rochester, Rochester New York  
"Frame-Based Form Perception: Constraints,  
Algorithms, Implementation"
- March 13        Dr. Joyce Farrell, Research Scientist in Corporate  
Engineering, Hewlett-Packard  
"Information Transmission Between Displays and  
People"
- March 19        Dr. James Crowley, Research Scientist at the  
Robotics Institute, Carnegie-Mellon University,  
Pittsburgh, PA.  
"Multiple Resolution Representation and Matching  
of 2-D Gray-Scale Shape"
- March 19        Dr. James Crowley, Research Scientist at the  
Robotics Institute, Carnegie-Mellon University,  
Pittsburgh, PA.  
"Navigation for a Intelligent Mobile Robot"
- April 12        Dr. Ruzena Bajcsy, Computer and Information Science  
Department, University of Pennsylvania  
"Integrating Vision and Touch for Robotics  
Applications"

OTHER ACADEMIC ACTIVITIES (cont'd)

- May 8 Dr. Jaime G. Carbonell, Associate Professor,  
Carnegie-Mellon University  
"Analogical Reasoning in Learning and Problem Solving"
- May 8 Dr. Jaime G. Carbonell, Associate Professor,  
Carnegie-Mellon University  
"The Fermi Project: General inference patterns for multi-domain problem solving in the natural sciences"
- May 17 Dr. Nancy Stein, Department of Psychology,  
University of Chicago  
"The Development of Emotional Understanding"
- May 20 Dr. Tom Trabasso, Professor, Department of  
Psychology, University of Chicago  
"Causal Thinking and the Representation of Events in Stories"

A series of seminars in decision science was presented under the sponsorship of the Decision Science Institute, directed by David Messick and Perry Shapiro.

- April 10 Dr. B. Fischhoff, Decision Research Inc.,  
Eugene, Oregon
- April 17 Dr. R. Hastic, Department of Psychology,  
Northwestern University
- May 15 Dr. H. Einhorn, School of Business Administration,  
University of Chicago
- May 23 Dr. K. McKinnon, Department of Psychology,  
University of British Columbia



PUBLICATIONS

- Borjas, George. "The Economic Status of Male Hispanic Migrants and Natives in the U.S." Research in Labor Economics. Vol. 6, 1984, pp 65-122. Article.
- \_\_\_\_\_. "Race, Labor Turnover, and Male Earnings." Industrial Relations, Winter 1984, pp.73-89. Article.
- \_\_\_\_\_. "Electoral Cycles and the Earnings of Federal Bureaucrats," article in Economic Inquiry, 1984.
- \_\_\_\_\_. "Research on Hispanics in the United States Labor Market," chapter in Hispanics in the United States: A New Social Agenda, edited by P. Lafferty and W. MCCready, 1984.
- Caswell, M. "Choices of Irrigation Technologies," (with D. Zilberman), American Journal of Agricultural Economics, V. 67, No. 2, May 1985, pp 224-234.
- Doherty, Sally. "The acquisition of spatial knowledge. An empirical study and computational process model." With R. Golledge, T. Smith, J. Pellegrino, S. Marshall. Chapter in A Computational Process Approach to Children's Acquisition of Spatial Knowledge of a Large Scale Environment. NSF Grant SES82-09621, Final Report December 1984.
- \_\_\_\_\_. A conceptual model and empirical analysis of children's acquisition of spatial knowledge. With R. Golledge, T. Smith, J. Pellegrino, S. Marshall. Chapter in A Computational Process Approach to Children's Acquisition of Spatial Knowledge of a Large Scale Environment. NSF Grant SES82-09621. Final Report, December 1984.
- \_\_\_\_\_. A conceptual model and empirical analysis of children's acquisition of spatial knowledge, with R.G. Golledge, T.R. Smith J.W. Pellegrino, S.P. Marshall. Journal of Environmental Psychology, in press.
- \_\_\_\_\_. Sex characteristics and roles, with D.D. Bielby. In T. Hughson & N. Postelthwaite (eds.). International Encyclopaedia of Education. Pergamon Press, in press.
- Fleming, Robin. "Monastic Lands and England's Defence in the Viking Age." English Historical Review (1985), 247-265.
- \_\_\_\_\_. "1086-1986: The Domesday Facsimile Edition." A. Williams (Ed.) Domesday Book, Vol I. , Alecto Historical Editions (forthcoming)
- \_\_\_\_\_. "Domesday Unbound: The Making of the Domesday Facsimile." Domesday Book, Vol II, Alecto Historical Editions (forthcoming)
- Frech, H.E. "The Social Benefits of Price Competition in Medicine." Perspectives in Biology and Medicine. 1984. Article.
- \_\_\_\_\_. "The American Health Care System." International Health Care Systems, ed. by Jean-Jacques Rosa (forthcoming).
- \_\_\_\_\_. "The Property Rights Theory of the Firm: Some Evidence from the U.S. Nursing Home Industry," Zeitschrift fur die gesamte Slaatswissenschaft (forthcoming).

PUBLICATIONS (cont'd)

- \_\_\_\_\_. "The Competitive Effects of Vertical Agreements," (with WS Comanor), American Economics Review, (forthcoming).
- Johnson, G. Wesley. "Double Impact." Greenwood Press. September 1985, in press.
- \_\_\_\_\_. The Public Historian, Editor in Charge. Published at UCSB and sponsored by the National Council on Public History. In press. A collection of papers of students enrolled in Public History courses.
- Klatzky, Roberta. "Visual memory: Definitions and functions. In R. Wyer, T. Srull, and J. Hartwick (Eds.), Handbook of social cognition. Hillsdale, H.J.: Erlbaum, 1984.
- \_\_\_\_\_. Recognizing familiar and unfamiliar faces. Memory & Cognition 1984, 12, 60-70. (with F. Forrest).
- \_\_\_\_\_. Memory and Awareness: An Information-Processing Perspective, W.H. Freeman, 1984.
- \_\_\_\_\_. Paivio revised (Review of J. Yuille, Ed., Imagery, memory and cognition). Contemporary Psychology, 1984, 29, 406.
- \_\_\_\_\_. Armchair theorists have more fun (commentary). The Behavioral and Brain Sciences, 1984, 7, 244.
- \_\_\_\_\_. The response criterion problem in tests of hypnosis and memory. International Journal of Clinical and Experimental Hypnosis, in press. (with M. Erdelyi).
- \_\_\_\_\_. Spatial-and-movement-based heuristics for encoding pattern information through touch. Journal of Experimental Psychology: General, 1984, 114, 33-49 (with Lederman, S. and P. Barber.).
- \_\_\_\_\_. Spatial-and-movement based heuristics for encoding pattern information through touch: A reply to S. Millar. Journal of Experimental Psychology: General, 1985, in press (with S. Lederman and P. Barber).
- \_\_\_\_\_. Verbal rehearsal and memory in language disordered children. Journal of Speech and Hearing Research, 1985, in press (with D. Kirchner).
- \_\_\_\_\_. Identifying objects by touch: An "expert system." Perception & Psychophysics, 1985, in press (with S. Lederman, and V. Metzger).
- \_\_\_\_\_. Experimental psychologists in industry: Perspectives of employers, employees, and educators. American Psychologist, 1985, in press. (with E. Alluisi, W. Cook, G. Forehand, and W. Howell).
- \_\_\_\_\_. Hand (Haptic Apprehension and Naming Device), Technical Report 85-RK-100, (with S. J. Lederman, R. Roan, and K. Andre). Center for Study of Spatial Cognition and Performance.
- Marshall, John. "Optimum Insurance for People Who Don't Want Any," Final Report. Huebner Foundation, June 1985.



PUBLICATIONS (Contd)

- Morgan, WD and J Mercer. "Conservation Using a Rate of Return Rule: Some Examples from California Municipal Water Departments." Water Resources Research.
- Pellegrino, J. "Individual Differences in Information Processing Efficiency." American Psychological Association, August, 1984.
- Peuquet, DJ. "Data Structures for a Knowledge-Based Geographic Information System," PROCEEDINGS, IGU International Symposium on Spatial Data Handling. 1984.
- \_\_\_\_\_. "A Conceptual Framework and Comparison of Spatial Data Models." Forthcoming in CARTOGRAPHICA.
- Phillips, L. "An Econometric Test of Structural Change in the Demographic Transition," forthcoming in The Scandinavian Journal of Economics.
- Smith, TR, Pellegrino, W. and RG Golledge, 1984. A Computational Process Approach to Children's Acquisition of Spatial Knowledge of a Large-Scale Environment." Final Report to NSF on Grant #SES 82 09621.
- \_\_\_\_\_ and MG Schwab. "Functional Invariance under Spatial Aggregation from Continuous Spatial Interaction Models," Geographical Analysis 17, 217-230.
- \_\_\_\_\_ and M Pazner. "Knowledge-Based Control of Search and Learning in a Large-Scale GIS." Proceedings of the International Symposium on Spatial Data Handling, DF Marble and R Brassel (Eds.), Geographisches Institut, Zurich, 1984.
- \_\_\_\_\_ and M Pazner. "A Knowledge-Based System for Answering Queries Concerning Geographic Objects," Proceedings of the Pecora 9 Symposium, Spatial Information Technologies for Remote Sensing, Today and Tomorrow. IEEE Computer Society Press, pp 286-289.
- Votey, HL. "An Econometric Test of Structural Change in the Demographic Transition" (with Stephen Haynes and Llad Phillips). The Scandinavian Journal of Economics, Vol 2, No. 3 (forthcoming).
- \_\_\_\_\_. "Taking Account of Systems Interactions in Modelling Road Accidents." Accident Analysis and Prevention (forthcoming).
- Williams, RL, Binkin NJ, Clingman EJ: Pregnancy outcomes among Spanish surname women in California. American Journal of Public Health, (forthcoming 1985).
- \_\_\_\_\_ Rivara FP, Culley GA, Hickok D: A health program's error on neonatal mortality in eastern Kentucky. American Journal of Preventive Medicine 1: 35-40, 1985.

PAPERS COMPLETED, SUBMITTED OR IN-PROGRESS

- Borjas, George. "The Impact of Assimilation on the Earnings of Immigrants: A Reexamination of the Evidence," article submitted to Journal of Labor Economics.
- Caswell, Margriet. "The Implications for Total Water Demand from the Adoption of Drip Irrigation in California Agriculture." Final Report for Water Resources Center Grant #683.
- Doherty, Sally. "Developmental Changes in Neighborhood Scene Recognition." Submitted to Child Development.
- Johnson, G. Wesley. "Graduate Program in Public Historical Studies." Final report to National Endowment for the Humanities on Grant #ED 1374-81.
- Mead, Walter J. An untitled book manuscript is now being prepared based on work under contract with the U.S. Forest Service. This book will report on Forest Service timber appraisal policies and competition for timber in the Pacific Northwest. Research has been completed. Other authors are Dennis Muraoka, Mark Schniepp and Richard Watson.
- W. Douglas Morgan and Lloyd J. Mercer. "The Efficiency of Water Pricing: A Rate of Return Analysis for Municipal Water Departments." Water Research Bulletin.
- \_\_\_\_\_. "A Dynamic Simulation Analysis of Regional Economic Change with Increased Water Prices." American Journal of Agricultural Economics.
- Shapiro, Perry. "Tiebout and Other Biases in the Econometrics of Local Public Choice," (with D. Rubinfeld and Judy Roberts), draft, December, 1984.
- \_\_\_\_\_. "The Efficiency of the Supply of Local Public Education: A Micro-Based Test" (with Theodore Bergstrom, D. Rubinfeld and Judy Roberts), draft, January, 1985.
- Slater, Paul. "A Citation-Based Taxonomy of Scientific Journals."
- \_\_\_\_\_. "Maximum-Entropy Convex Decompositions of Doubly-Stochastic and Nonnegative Matrices."
- \_\_\_\_\_. "World Population Distribution: Smoothed Representations."
- \_\_\_\_\_. "International Migration and Air Travel: Global Estimation and Smoothing."
- Peuquet, Donna J. "Geographic Information Systems: A Technical Approach," (with D. Marble), in preparation.
- \_\_\_\_\_. "Heuristic Spatial Search in a Very Large Geographic Database." (with Z. Chen), in preparation.
- Frech, T.E., "The Welfare Cost of Rationing by Waiting," with William C. Lee, submitted to the Quarterly Journal of Economics.

PAPERS COMPLETED, SUBMITTED OR IN-PROGRESS (cont'd)

Pellegrino, James. Knowledge as a source of difference in word recognition difference in word recognition, with S. McIntyre & P. Drum. Journal article, submitted 1984.

The role of knowledge in children's analogical reasoning: Number analogies, with K.C. D'Applonia, D.H. Gitomer, and R. Glaser. Journal article, submitted 1984.

Phillips, L. "Use of Vital Statistics as Potential Social Indicators of Checmical Pollution of Water in Nuevo Leon." Completed for submission.

\_\_\_\_\_, Lopez, E. and Manuel Silas. "Deaths from Gastrointestinal Cancer in the Runicipios of Nuevo Leon: 1980-83, Probably Cause for Water Sampling. To be presented at the First Conference on Environmental Economics in Mexico and Latin America in Monterey, Mexico September 9-13, 1985 and published in the Proceedings.

Smith, TR, Gollledge, RG, Pellegrino, JM, Doherty, S, and Marshall SP, 1985. "A Conceptual Model and Empirical Analysis of Children's Acquisition of Spatial Knowledge," Journal of environmental Psychology, in press.

\_\_\_\_\_ and RE Parker, 1985. "An Analysis of the Efficacy and Efficiency of Hierarchical Procedures for Computer Trajectories over Complex Surfaces," submitted to European Journal of Operations Research.

Votey, HL. "The Allocation of Police Manpower Across Counties in Sweden," funded by a continuation grant from the Swedish National Council for Crime Prevention.

\_\_\_\_\_. "Crime Causality and Control for Black and White Female Youth," a study funded by NSF (with Llad Phillips).

\_\_\_\_\_. "Deterrence and Incapacitation Effects of Efforts to Control Drunken Driving," a study funded by the National Institute of Justice (with Perry Shapiro).

\_\_\_\_\_. "Policy to Affect the Decision to Drink and Drive in Sweden," (with Perry Shapiro) for Brottförebyggande Rådet, Stockholm.

Williams, RL, Binkin NJ, Hoave, CJR, Clingman, EJ: Racial Differences in Neonatal Mortality: What Causes of Death Contribute to the Gap? Submitted to the Journal of the American Medical Association.

PAPERS PRESENTED

- Caswell, M. "The Economics of Input-Augmenting Technologies in Agriculture," invited lecture at the University of Venice, Italy, October 25, 1984.
- Doherty, S. "Developmental changes in neighborhood knowledge, with JW Pellegrino. Presented at the Annual Meeting of the Society for Research in Child Development, Toronto, April 1985.
- Golledge, RG. "Matrix Comparison Methods for the Evaluation of Alternative Regional Forecasting Models." Presented at the US/Australia Co-Operative Science Workshop, Palm Springs 6/24-7/2/84.
- Position paper presented on "Dissaggregate Behavior and Decision Making Models," for the Ventura US/UK Joint Workshop in Interfacing Micro and Macro Models of Human Spatial Behavior.
- Mead, WJ. "An Economic Analysis of OPEC as a Cartel," Faculty of University of Kuwait, April 3, 1985.
- "Crude Oil Substitutes for the Next Half Century - Market Constraints on OPEC Oil Prices," Organization of Arab Petroleum Exporting Countries (OAPEC), Kuwait, April 8, 1985.
- "Crude Oil Price and Income for Kuwait, 1985-2000; A Forecast," Kuwait Institute for Scientific Research, April 9, 1985.
- "The Performance Record of US Oil and Gas Leasing--Lessons for Others," Mineral Revenues Inquiry, Perth, Australia, April 17, 1985.
- "The Performance Record of US Oil and Gas Leasing--Lessons for Others," Economics Department, University of Sydney, Sydney, Australia, April 19, 1985.
- "An Economic Appraisal of US Forest Service Timber Sales in the Pacific Northwest," School of Forestry, University of New South Wales, Kensington, Australia, April 22, 1985.
- "The Performance Record of US Oil and Gas Leasing--Lessons for Others," Petroleum Development Department, Economic Planning Advisory Council, Canberra, Australia, April 23, 1985.
- "Alternative Oil and Gas Leasing Regimes for Australia," Parliament of Australia (Caucus Committee), Canberra, Australia, April 24, 1985.
- "An Economic Appraisal of US Forest Service Timber Sales in the Pacific Northwest," School of Forestry, Department of Economics, University of Melbourne, Australia, April 24, 1985.
- Ibid., New Zealand Forest Service, Wellington, New Zealand, April 26.
- Ibid., School of Forestry, University of Canterbury, Christchurch, New Zealand, April 29.
- Ibid., Forest Research Institute, New Zealand Forest Service, Rotorua, New Zealand, May 1.

PAPERS PRESENTED (cont'd)

- Klatzky, R. "Perception of 2D and 3D patterns from touch." Presented at Convention of the American Psychological Assn., Toronto, August 1984 (with S. Lederman).
- "Report of the Task Force on Employability of Experimental Psychologists in Industry." Presented at Convention of the American Psychological Assn., Toronto, August 1984.
- "Apprehending Form from Touch." Invited colloquium, Rice University, Houston, October 1984.
- "Apprehending Spatial Information from Touch." Invited colloquium, University of Iowa, Iowa City, April 1985.
- "Levels of Representation in Memory." Invited presentation at NATO Advanced Research Workshop: Aspects of Face Processing, Aberdeen, Scotland, July 1985.
- "Knowledge-based Control of Human Hand Movement." Invited presentation at Engineering Foundation on Biomechanics and the Neural Control of Movement, Hanneker, N.H., July 1985 (given by S. Lederman).
- Fleming, R. "Cnut's Conquest and the Destruction of the Royal Kindred." Presented at the Americal Historical Association, December 1984.
- "The Domesday Book Database Project: Progress and Prospects,." Presented at the Twentieth International Congress on Medieval Studies, University of Western Michigan, May 1985.
- Ibid., Pacific Coast Conference on British Studies, May, 1985.
- Mack, K. "Kings and Thegns in the Rise of the West Saxon Monarchy." Presented at the Twentieth International Congress on Medieval Studies, Western Michigan University, May 1985.
- "Thegnyl Attestations and English Governance," Pacific Coast Conference on British Studies, May 1985.
- Slater, P. "World Population Distribution: Smoothed Representations." General Conference of the International Union for the Scientific Study of Population, June 5-12, 1985, Florence, Italy.
- "International Migration and Air Travel: Global Estimation and Smoothing." International Union for the Scientific Study of Population, June 5-12, 1985, Florence, Italy.
- Votey, HL. "Taking Account of System Interactions in Modeling Road Accidents." International Workshop on the Methodology of Modeling Road Accident and Injury Patterns, University of Sussex, Brighton, England, July 9-10, 1984.
- "Determining the Cost Effectiveness of Accident Control Measures: Theory, Data Acquisition and Modeling Challenger." International Workshop on the Methodology of Modeling Road Accident and Injury Patterns, University of Sussex, Brighton, England, July 9-10, 1984.
- "The Allocation of Police Manpower Across Counties in Sweden." Brottsförbyggande Rådet (National Council for Crime Prevention), Stockholm, Sweden, July 17, 1984.
- "The Effects of Arrests and Sanctions on Drunken Driving in Sweden." Brottsförbyggande Rådet (National Council for Crime Prevention), Stockholm, Sweden, July 23, 1984.

PAPERS PRESENTED (cont'd)

"Youth, Public Policy and Countermeasures: The Role of Law Enforcement"  
International Symposium on Alcohol, Drugs and Driving, Santa Monica,  
CA, January 9-11, 1985.

Williams, RL. "Monitoring Changes in Infant Mortality in California,"  
112th Annual APHA Meeting, Anaheim, CA. 1984.

"Pregnancy Outcomes Among California's Spanish-Surname Population."  
112th Annual APHA Meeting, Anaheim, CA., 1984.

PUBLIC SERVICE

- Caswell, M. Appointed to the Committee on Irrigation-Induced Water Quality Problems by the Water Science and Technology Board of the National Research Council. April 85 - April 88.
- Frech, H.E. Summarizer, Conference on Antitrust and Economic Efficiency. Hoover Institution, Stanford University, August 30, 31, 1984.  
Testified, Massachusetts Insurance Commission Hearings on Blue Shield rate increases.
- Fleming, R. Awarded the Van Courtlandt Elliott Prize from the Medieval Academy of America.
- Klatzky, R. Review Panels -- 3 NSF reviews  
Consultation to Government or Business: Member of Visiting Panel on Research, Educational Testing Service  
Editorial Responsibilities -- Associate Editor of journal: Memory & Cognition; on Editorial Board of Journal of Experimental Psychology: Human Learning Memory & Cognition. Also frequent ad hoc reviewer.  
Speaking Engagements: talk to Parkinsons Disease Assn. on memory improvement.  
Invited papers -- Report of the APA task Force on the Employment of Experimental Psychologists in Industry.
- Mack, K. Awards: Chancellor's Graduate Research Associateship.  
With R. Fleming is now working on an exhibit for the Public Record Office, London. The P.R.O. is planning a major exhibition celebrating Domesday Book's nine hundredth anniversary beginning in April, 1985.
- Williams, RL Invited Lectures  
"Maternal and Child Health Data Systems and the Need for Cooperation in Data Collection, Management, and Dissemination." Bi-Regional Institute on Current Issues and Future Trends in Maternal and Child Health and Crippled Children, Salt Lake City, UT, 1984.  
"Analyzing Perinatal Mortality Statistics in the Final Decades of the 20th Century." 1984 Director's Meeting of Designated State Centers for Health Statistics, Minneapolis, MN. 1984  
"Pregnancy Outcomes of Mexican-Hispanic Women." Patterns of Care: Binational MCH Educational Workshop: California/Baja California, Santa Barbara, CA. 1985.  
"A Perinatal Data System Using California's Automated Vital Statistics System." Perinatal Data System Project Advisory Meeting, Salt Lake City, UT, 1985.  
"Using AVSS to Monitor Community Perinatal Health." San Francisco Dept. of Public Hlth & San Francisco Perinatal Forum, CA. 1985.  
"Understanding the Components of a Family Health Services Data System Using California's MCH Data Base as a Model." Moving Towards A Family Health Services Data System, Honolulu, HI. 1985.  
"Development of an Automated Vital Statistics System." Moving Towards A Family Health Services Data System, Honolulu, HI. 1985.

PUBLIC SERVICE (cont'd)

"MCH Uses of Vital Records: California's Maternal and Child Health Data Base As A Model." Bi-Regional Institute on Perinatal Health Care, Region VII and IX, San Francisco, CA, 1985.

Editorial Experience: Continuing

Journal Referee: American Journal of Public Health  
American Journal of Obstetrics & Gynecology  
New England Journal of Medicine

Editorial Board: Journal of Perinatology

Consultant: Massachusetts Department of Public Health  
Southern California Kaiser Permanente Medical Group  
Michigan Department of Public Health

Elected Member: California Perinatal Association, Coordinating Council  
Quality Assurance Task Force, Perinatal Advisory Council  
of the Los Angeles Communities



Community and Organization  
Research Institute

ACCOUNT NAME AND NUMBER	EXPENDITURES - EXTRAMURAL				
	SALARIES BENEFITS	S&E	EQUIP	TRAVEL DOMESTIC	TRAVEL FOREIGN
Cal Dept Hlth - Williams 447628-20746	\$69427.67 14196.07	\$70243.78	\$	\$10932.28	\$
NSF SES82 09732-Shapiro 447628-22053	1341.03 39.02	1208.73		373.98	
NSF SES84 00799-Smith/Estes/ 447628-22142                   Peuquet	23023.71 557.15	5682.17	4602.83	360.50	910.40
NSF SES84 12860-Phillips/Votey 447628-22155	10992.29 694.16	2615.56			
NSF SES84 09045-Shapiro 447628-22164	22912.65 386.60	3954.53		751.21	
USDJ 841JCX-0033-Votey/Shapiro 447628-22674	30775.95 2747.34	1388.43	4965.36		
NEH ED1374-Johnson 447628-23191	20912.25 2220.47	6175.50		1739.30	
NEH RT20213-Hollister 447628-23194	19742.20 290.00	987.40		394.25	
NASA NGT805-Smith 447628-23286				10000.00	
NIH HD16378-01-Smith/Slater 447628-24298	1468.00 18.35				
NIH MCJ 063211-01 Williams 447628-24321	39538.02 6882.14	1525.91	2505.33		
NIH MCJ 063211-02 Williams 447628-24398	40848.00 8356.30	1554.80	8065.54		
UCSB Foundation-M. Johnson 447628-53265	2134.56 73.79	731.90	3.18		
UCSB Foundation- Jackson 447628-55100		2000.00			
Huebner Foundation-Marshall 447628-57583	4676.00 316.40				
Rockefeller Fdn.-Johnson 447628-58301	599.70 81.27	2601.34			
Rockefeller Fdn-Borjas 447628-58305	2777.25 34.71	6987.19		960.70	

EXPENDITURES - EXTRAMURAL (cont'd)

<u>ACCOUNT NAME AND NUMBER</u>	<u>SALARIES BENEFITS</u>	<u>S&amp;E</u>	<u>EQUIP</u>	<u>TRAVEL DOMESTIC</u>	<u>TRAVEL FOREIGN</u>
Toyota Foundation-Fukui 447628-58393	975.58 12.19	82.73			
Univ. of Washington-Pellegrino 447628-59760	11385.00 142.35	477.42	1109.50		
Phloem Transport Conf.-Cronshaw 447629-19900		1641.24			
UCSB Foundation-Hollister 447628-53265	6942.85 102.06	962.26			
USDI USGS21162A-Smith/Estes/ 447628-27667                    Peuquet	15045.51 709.13	1003.12			
	<u>\$366032.90</u>	<u>\$111823.54</u>	<u>\$21248.56</u>	<u>\$25514.47</u>	<u>\$910.40</u>

Community and Organization  
Research Institute

EXPENDITURES - INTRAMURAL

<u>DESCRIPTION</u>	<u>ADMIN SUPPORT</u>	<u>SUPPLIES &amp; EXPENSE</u>	<u>DIRECT RESEARCH</u>	<u>SPECIAL PROJECTS</u>	<u>FUNDS ALLOCATED BY ORDA</u>
<u>19900</u>	\$	\$	\$	\$	\$
Staff Salaries	218780				
Benefits	18744				
S&E		10817			
Equipment	900				
Travel	644				
 <u>07427</u>					
Benefits	257				
S&E		3087			
Equipment	692				
Travel			1888		
 WRC626 Mercer/Morgan			10722		
WRC638 Caswell			9447		
UERG Mead			2530		
 Matching funds					512
General Assitance					3500
Special Projects				94144	
 Total	<u>\$240017</u>	<u>\$ 13904</u>	<u>\$ 24587</u>	<u>\$ 94144</u>	<u>\$ 4012</u>

**APPENDIX - B 1984-85 ANNUAL REPORT**

Community and Organization  
 ORU: Research Institute

STATISTICAL SUMMARY

1a) UCSB academic staff engaged in research:

a) Faculty	<u>26</u>	e) Graduates	<u>32</u>
b) Professional Researchers	<u>3</u>	f) Undergraduates	<u>9</u>
c) Specialists	<u>2</u>	g) Other (specify)	<u>6</u>
d) Postdoctoral	<u>5</u>	Fellowships	
		TOTAL	<u>83</u>

1b) Participation from other campuses, colleges, universities, and industry:

a) Faculty	<u>6</u>		
b1) Graduates	<u>6</u>		
b2) Undergraduates	<u>0</u>		
b3) Other (designate)	<u>21</u>	Seminar Speakers	
	<u>17</u>	Industry	
		TOTAL	<u>50</u>
		See Appendix B-1	

2) Number of employees and FTE in unit:

a) Employees on University Funds:

	Number	FTE
Professional	<u>1</u>	<u>.11</u>
Technical - Students	<u>13</u>	<u>.89</u>

Administrative	<u>4</u>	<u>2.24</u>
Clerical	<u>2</u>	<u>1.50</u>
TOTAL	<u>18</u>	<u>4.70</u>

TOTAL NUMBER: 18

TOTAL FTE: 4.70

b) Employees on Non-University Funds:

	Number	FTE
Professional	<u>18</u>	<u>5.38</u>
Technical	<u>35</u>	<u>4.09</u>
Administrative	<u>1</u>	<u>.02</u>
Clerical	<u>4</u>	<u>2.22</u>

TOTAL NUMBER: 58

TOTAL FTE: 11.71

See Appendix B-2

- 3) Number of Publications: (See pg. 19 of Section A). TOTAL: 44
- 4) Number of proposals submitted..... TOTAL: 32
- 5) Number of seminars, symposia, etc. sponsored by the unit:  
(See page 16 of Section A)..... TOTAL: 26
- 6) Amount of space currently occupied (Sq. Ft.)..... TOTAL: 4236

See Appendix B-3

## A-1 EXTRAMURAL RESEARCH ACTIVITY

## Proposals Submitted 1984/1985

Principal Investigator	Agency/ Grant No.	Title	\$ Value	Period of Award	Status	Funded 84/85
J. Estes, T.R. Smith (Geog.)	USGS	"Knowledge Based Engineering for Data Base Management and Use" Proposes to implement a knowledge-based geographic information system called GIRLS (Geographic Information Retrieval and Learning System). The system is designed as a basic tool so that users with interests in different knowledge domains may tailor the system to their own requirements.	100,394	10/01/84- 09/30/85	Denied	
T. Smith, D. Peuquet (Geog.)	NASA Ames	"Knowledge Based Engineering for Data Base Management and Use" Proposes to implement a knowledge-based geographic information system called GIRLS (Geographic Information Retrieval and Learning System). The system is designed as a basic tool so that users with interests in different knowledge domains may tailor the system to their own requirements.	100,394	05/01/85- 10/31/86	Funded 85-86	100,394
H. Fukui (Pol. Sci.)	Dept. of State	"Generational Differences in Japanese Nationalism" Proposes to survey and analyze the arguments put forth to substantiate or counter the assertion that expansion of Japanese military capabilities or roles would adversely affect the U.S. and/or other friendly countries.	34,035	07/20/84- 05/19/85	Denied	
T.R. Smith, D. Peuquet, J. Estes (Geog.)	NSF SES84- 00799	"Constructing a Self-Modifying Knowledge Based Geographical Information System" Proposes to examine several theoretical issues concerning the construction of a Knowledge-Based Geographical Information System and integrate the results of this research into a running prototype of such a system.		03/15/84- 02/28/86	Funded	5,000

J. Pellegrino (Educ.)	U. Wash.	"Computer Based Assessment of Complex Cognitive Abilities" Proposes to conduct work on the development of complex cognitive performance. Nine projects will focus on individual differences in tasks varying in complexity.	443,852	07/01/85-06/30/89	Pending
J. Pellegrino (Educ.)	U. Wash.	"Computerized Assessment of Spatial Abilities" Proposes to assess the components of spatial aptitude and expertise.	48,267	01/01/85-12/31/85	Funded
R. Kemmerer P. Eggert, T. Smith, (Geog.), M. Marcus (Comp. Sci.)	NSF	"Computer Research Equipment" (Computer Science) Proposes to 1) specify, test and verify parallel systems; 2) find errors and bottlenecks in parallel logic programs; 3) examine parallel processing in the context of Geographic Information Retrieval and Learning System; 4) develop appropriate methods for attacking the problem of numerical range.	41,616	01/01/85-indefinite	Denied
W. Hollister, R. Fleming (Hist.)	NEH	"Domesday Book Database" Proposes to extend the database of the Domesday Book beyond the completed Volume I "Greater Domesday," to include Volume II, "Little Domesday."	235,989	07/01/85-06/30/86	Funded 85-86
W.T./D. Bielby (Soc.)	NSF	"Men's and Women's Commitment to Work and Family" Proposes to study how work and family roles become sources of identity, how individuals develop preferences for a particular balance of work and family activities, and how commitments are affected by work experiences.	32,378	08/01/85-07/31/86	Funded 85-86
W.T./D. Bielby (Soc.)	Rockefeller Foundation	"Men's and Women's Commitment to Work and Family" Proposes to study how work and family roles become sources of identity, how individuals develop preferences for a particular balance of work and family activities, and how commitments are affected by work experiences.	32,661	07/01/85-06/30/86	Pending
J.M. Woolley (Econ.)	PHS/NCHSR	"Competition Among Hospitals" This project is designed to improve our theoretical and empirical knowledge of hospital competition.	21,600	09/01/85-08/31/86	Denied

R. Williams (CORI)	Public Health Svc.	"Automated Perinatal Information System" Proposes to test the feasibility of implementing a computer system for automating birth certificates in hospitals, and secondarily to test the improvement in timeliness and accuracy of the resultant perinatal information.	129,831	01/01/85-12/31/85	Funded	129,831
G. Borjas (Econ.)	Rockefeller Foundation	"The Impact of Immigrants on the Earnings of Natives in the United States Labor Market" Requests a supplement for publication costs for a paper on the impact of immigrants on the earnings of the native-born.	500	11/01/84-05/31/85	Denied	
T. Smith, R. Dubayah (Geog.)	NASA	"Constructing Geographic Expert Systems with Learning Capabilities?" Proposes to focus on the concept of a spatially dispersed knowledge base, as applied to a distributed computer network.		07/01/84-06/30/85	Funded 84-85	13,500
R. Williams (CORI)	CA Dept. of Health	"Maternal and Child Health Database: Development, Application and Dissemination" Proposes to continue the application and development of the Maternal and Child Health Data Base.	232,319	07/01/85-06/30/86	Funded 85-86	18,000
R. Williams (CORI)	CA Dept. of Health	"Maternal and Child Health Database: Development, Application and Dissemination" Proposes to continue the application and development of the Maternal and Child Health Data Base.	20,792 (augmentation)	09/01/84-06/30/84	Funded	22,720
J. Cronshaw, W. Lucas (Bio. Sci.)	US Dept. of Energy	"International Phloem Transport Conference" Proposes to hold an international conference on Phloem Transport in August 1985 to be held at the Asilomar Conference Center in California.	15,000	01/01/85-12/31/85	Funded 85-86	2,500
J. Cronshaw (Bio. Sci.)	USDA	"International Phloem Transport Conference" Proposes to hold an international conference August 1985 to be held at the Asilomar Conference Center in California.	3,000	12/12/84-11/30/85	Funded 84-86	3,000
J. Cronshaw (Bio. Sci.)	NSF	"International Phloem Transport Conference" Proposes to hold an international conference August 1985 to be held at the Asilomar Conference Center in California.		02/15/85-01/31/86	Funded 84-85	5,000
T. Smith D. Pequet J. Estes (Geog)		Knowledge Based Engineering for Data Base Management and Use."	2,484	07/01/83-01/31/86	Funded (Supplement)	2,484



R. Ingham J. Costello (Speech)	NIH	387,814	12/01/85- 11/30/88	Pending
"Effects of Phonation/Pause Durations on Stuttering" The purpose of this project is to investigate the contribution to stuttering of variability in phonation and pause duration intervals.				
J. Sengupta (Econ.)	NSF	80,140	07/01/85- 06/30/87	Pending
"Data Envelopment Analysis in Hierarchical Decision Systems to Measure Stochastic and Dynamic Aspects for Improving Management Decisions" The objectives of the research are (1) to explore the application to hierarchical decision systems (HDS) of the new and powerful tool of DEA (data envelopment analysis) pioneered by Charnes and Cooper, and (2) to extend and generalize it for measuring the stochastic and dynamic aspects of hierarchical decision-making by management.				
J. Sengupta (Econ.)	NSF	81,570	07/01/85- 07/01/87	Pending
"Efficiency Evaluation in Nonmarket Economic Systems: Economic Systems: Uses and Extension of Efficiency Analysis" The objectives of the research are (1) to integrate the current theory of nonparametric measurement of input-output efficiency and the parametric approach to econometrically estimate the production frontier; (2) to develop a method for the cause of joint interdependent outputs; and (3) to explore its use in evaluating efficiency of public education in schools.				
J. Remak (Hist.)	NEH	61,871	10/01/85- 12/31/86	Pending
"Second Reich: Germany 1871-1918, A Reappraisal" Proposes a seminar that will deal with German history, society, and politics from the Reich's founding in 1871 to the war's loss in 1918.				
C. Stuart, M. Feldman (Econ.)	NSF	32,261	07/01/85- 06/30/86	Denied
"Life-Cycle Saving in an Uncertain Environment" This project will model life-cycle saving decisions when households with uncertain lifetimes also face private, uninsurable risks.				
T. Cooley, W. Parke (Econ.)	NSF	126,891	07/01/85- 06/30/87	Denied
"Likelihood Methods of Prediction for Econometric Models" This proposal describes a likelihood prediction principle that is consistent with Bayesian and frequentist approaches to the prediction problem and thus occupies a similar position to likelihood estimation.				

J. Sonstelie (Econ.)	NSF	"Estimating the Comparative Efficiency of Public and Private Schools" The objective of the proposed research is to estimate the price of educational quality in the private sector.	53,537	07/01/85- 07/01/86	Denied	
H.L. Votey, D. Botkin (Econ., Env. St.)	State of CA Dept. of Fish & Game	"Research and Analysis to Satisfy AB 1614" California State Assembly Bill 1614, the Mono Lake Research Bill, requires a comprehensive analysis of the aquatic ecology, avifauna, air quality and hydrology of the Mono Basin. The primary purpose of this analysis is to aid the management of the Mono Basin.	250,000	04/05/85- 12/31/87	Funded	250,000
P. Shapiro, I. Bergstrom, D. Rubinfeld (Econ., U. Mich., UCB)	NSF	"Community Choice & the Demand for Public Goods" The proposed research will accomplish three tasks, all related to estimating the demand for public goods, with particular emphasis on education.		08/01/84- 01/31/86	Funded	45,125
P. Shapiro, I. Bergstrom, D. Rubinfeld (Econ., U. Mich., UCB)	NSF	"Community Choice & the Demand for Public Goods" This project is a continuation of the above.	65,583	08/01/85- 07/31/86	Funded	65,583
L. Phillips, H. Votey (Econ.)	NSF	"Male/Female Crime Rate Differentials: A Study of Effects of Causal and Control Forces" The focus on this research is on the factors, both causal and control, responsible for the changing crime rate differentials between men and women. The modelling takes account of the role played by the changing status of women and the limitations that status places on their alternatives for providing for themselves and their children, for maintaining a home, acquiring an education, etc.	From 83-84	07/15/84 12/31/85	Funded	55,710

L. Mercer W.D. Morgan (Econ)	Water Resources Center	"The Effectiveness of Alternative Water Rationing Schemes" This project analyzes the potential of policy alternatives for improving nonstructural urban water demand management with focus on water conservation.	9,500	07/01/84 06/30/85	9,500
W.J. Mead (Econ)	UERG	"Private and Social Costs of Alternative Electric Power Technologies for California" This project estimates the private and social costs of four electric power technologies.	19,826	07/01/84- 06/30/85	18,700
J. Cronshaw (Bio-Sci)	Various Donors (Gifts)	"International Phloem Transport Conference" Donations from 16 U.S. corporations in support of the Phloem Transport Conference to be held at Asilomar, August 18-23.		05/01/85- 12/31/85	32,000

Total extramural proposals submitted 1984/85	\$2,700,589
Extramural proposals funded	608,837
Extramural proposals submitted 1984/85 and funded 1985/86	484,855
Support from private contributions	32,000

## A-2 INTRAMURAL RESEARCH ACTIVITY

Principal Investigator	Agency/ Grant No.	Title	\$ Value	Total Funded 84/85
R. Klatzky, J. Pellegrino, T. Smith (Psychology, Educ., Geog.)	Academic Senate	"Interdisciplinary Studies of Spatial Cognition & Performance" This project deals with the integration of visual and motor information in pattern recognition.	5,088	3,750
Marion Ashby Johnson (Hist.)	Academic Senate	"History of the Santa Barbara Beautification Movement" Support oral history interviews with persons involved in the beautification of Santa Barbara from 1920.	3,341	2,500
R. Fleming, W. Hollister (Hist.)	UCSB Foundation	Domesday Book Database To support Volume II of the Domesday Book research.	15,000	15,000
T. Cooley, (Econ.) R. Berk (Soc.)	Academic Senate	CORI-SPRI econometric seminars Support for travel for guest speakers for the CORI/SPRI econometric workshops.	869	869
T. Cooley, (Econ.) R. Berk (Soc.)	ORDA	CORI-SPRI econometric seminars Support for travel for guest speakers for the CORI/SPRI econometric workshops.	750	750
S. Fisher (Soc.)	Instructional Development	"Sociological Aspects of Cleavage and Consensus Among Nations" Clerical assistance.	998	998

R. Klatzky, J. Pellegrino, I. Smith (Psych., Educ., Geog.)	ORDA	"Center for the Study of Spatial Cognition and Performance" Establishes an interdisciplinary research group in Cognitive Science with an emphasis on problems in spatial cognition.	30,000	15,000
R. Klatzky, J. Pellegrino, T. Smith (Psych., Educ., Geog.)	L&S	"Center for the Study of Spatial Cognition and Performance" Establishes an interdisciplinary research group in Cognitive Science with an emphasis on problems in spatial cognition.	20,000	20,000
J. Cronshaw (Bio. Sci.)	L&S	"International Conference on Phloem Transport" In support of the Phloem Transport conference to be held at Asilomar on August 18-25.	2,500	2,500
H.L. Votey (Econ.)	ORDA	"NIJ Crime Control Conference"	1,150	1,150
H.L. Votey (Econ.)	ORDA	Travel to England	1,000	1,000
H.E. Frech, J.M. Woolley (Econ.)	ORDA	"Hospital Competition Proposal Development"	3,000	3,000
J. Sonstelle (Econ.)	ORDA	Proposal Development	400	400
CORI	ORDA	One Time Needs Office Equipment	843	843
CORI	ORDA	Computer Equipment	5,000	5,000
CORI	Bio-Sci	Biomedical Research Award from NIH, Yr 19	1,783	1,783
Total Intramural Funds FY 84/85				\$74,543

APPENDIX B-1

1-a) UCSB Academic staff engaged in research

a. <u>Faculty</u> <u>Name</u>	<u>Department</u>	<u>Funding Agency</u>
Borjas, G.	Economics	Rockefeller Foundation
Caswell, M	Economics	WRC
Cohen, P.	History	NEH
Cronshaw, J.	Biological Sciences	NSF, USDA, DOE
Estes, J.	Geography	NSF
Fisher, S.	Sociology	Instructional Development
Fleming, R.	History	NEH
Frech, T.	Economics	ORDA
Fukui, H.	Political Science	Toyota Foundation
Gallagher, N.	History	NEH
Hollister, CW	History	NEH
Johnson, GW	History	NEH
Kalman, L.	History	NEH
Klatzky, R.	Psychology	CSSCAP
Marshall, J.	Economics	Hubner Foundation
Mead, WJ	Economics	UERG
Mercer, L.	Economics	WRC
Morgan, WD	Economics	WRC
Pellegrino, J.	Psychology	Univ. of Washington
Peuquet, DJ	Geography	NSF, USGS
Schniepp, M.	Economics	NSF
Shapiro, P.	Economics	USDJ, NSF
Pursell, C.	History	NEH
Smith, TR	Geography & Comp. Sci.	NSF, NIH, USGS
Phillips, L.	Economics	NSF
Votey, HL	Economics	NSF, USDJ

b. Professional Researchers

Johnson, MA	CORI	CCH, Wilbur Foundation
Slater, P.	CORI	NIH
Williams, RL	CORI	CalDH, PHS, NIH

c. Specialists

Clingman, EJ	CORI	Cal DH
Rust, KJ	CORI	Cal DH

APPENDIX B-1 (cont'd)

d. Postgraduate Researchers

Doherty, S.	CORI	ORDA
Pazner, M.	Geography	NSF USGS
Graves, G.	History	NEH
Kahn, A.	History	NEH
Lathrop, R.	Economics	WRC

e. Graduates

Abate, RJ	Psychology	Univ. of Washington
Agarwal, P.	Computer Science	NSF,
Alderton, DL	Psychology	Univ. of Washington
Askew, GV	History	NEH
Banuelos, M.	Chicano Studies	Mexus
Chan, C	Geography	NSF
Chow, K.	Computer Science	NSF, USGS
Daly, M.	History	Rockefeller Foundation
Denning, MA	Economics	UERG
Dubayah, R.	Geography	NASA
French, S.	Grad. School of Ed.	CSSCAP
Gersho, M.	Computer Science	NSF, USGS
Helm, LB	History	NEH
Huang, WJ	Economics	Rockefeller Foundation
Burnett, RJ	Economics	USDJ, NSF
Lin, ZC	Electrical Engineering	NSF
Liu, Y.	Computer Science	NSF
Mack, K.	History	NEH
Manchuelle, EF	History	NEH
McClosky, BP	Grad School of Ed	CSSCAP
McDonald, TP	Psychology	Univ. of Washington
Menon, S.	Geography	NSF, USGS
Ortiz, S.	Chicano Studies	Mexus
Park, HS	Political Science	Toyota Foundation
Singell, LD	Economics	Rockefeller Foundation
Schwab, M.	Geography	NIH
Solumanipau, I	Geography	USGS
Williams, AP	Economics	Rockefeller Foundation
Wooley, MJ	Economics	ORDA
Yew, PR	Biology	NEH
Zhan, CX	Geography	USGS
Zukin, J.	History	NIH
Joglekar, U.	Computer Science	NSF

f. Undergraduates

Andre, K	Psychology	CSSCAP
Bigley, J.	Economics	WRC
Engstrom, D	Biology	Cal DH
Gruberth, C	Psychology	CSSCAP
Iacobellis, J.	Sociology	Instructional Development
Kargaard, BL	History	NEH
Solomon, D.	Sociology	Instructional Development
Tran Viet, T.	Chemistry	Cal DH

APPENDIX B-1 (cont'd)

1b) Participants from other campuses, universities, and industry

a) Faculty

Researchers

Bergstrom, T., Profor of Economics, University of Michigan on  
Grant No. NSF SES84 09045.

Lucas, G., Professor of Biology, UC Davis, Co-Principal Investigator  
on Phloem Transport Conference

Rubinfeld, D., Professor of Law and Economics, UC Berkeley, on  
Grant No. NSF SES84 09045.

Visiting Researchers

DeGraaf, Lawrence, Department of History, California State University,  
Fullerton.

Hadenius, Axel, Department of Political Science, University of  
Upsala, Sweden

Starr, Raymond, Department of History, San Diego State University.

Seminar Speakers

Bajcsy, R., University of Pennsylvania

Ballard, D.H., Universit of Rochester

Biederman, I., State University of New York at Buffalo

Brown, C., University of Rochester, New York

Brownstone, D., UC Irvine

Carbonell, JG, Carnegie-Mellon University

Craine, R., UC Berkeley

Crowley, J., Carnegie-Mellon University

Engle, R, UC San Diego

Geweke, J., Duke University

Ghysels, UC Berkeley

Jussa, M., University of Chicago

Langley, UC Irvine

Meese, R., UC Berkeley

Scotchmer, S., Harvard University

Stein, N., University of Chicago

Taylor, JB, Stanford University

Trabasso, T., Department of Psychology

Hastic, R., Northwestern University

Einhorn, H., University of Chicago

McKinnon, University of British Columbia

b1) Graduates

Jacober, S., Data Processor, UC Berkeley, on Grant No. 84-8382, California  
Department of Health

MacCaulay, M., Research Assistant, UC Berkeley, on Grant No. 84-8382,  
California Department of Health

Roberts, J., Postgraduate Research Economist, University of Michigan,  
on Grant No. NSF SES 84-09045.

Doublet, JM, Research Assistant, UC Berkeley, on Grant No. NSF SES84-09045.

Church, JR., Research Assistant, UC Berkeley, on Grant No. NSF SES84-09045.

Miller, BA., Research Assistant, UC Berkeley, on Grant No. NSF SES84-09045.



APPENDIX B-1 (cont'd)

b3) Industry

Farrell, J., Research Scientist in Corporate Engineering, Hewlett-Packard  
Fischhoff, R., Decision Research Inc.  
Pioneer Hi-Bred International, Inc. Johnston, Iowa  
Ciba-Geigy Corporation, Greensboro, NC  
Pfizer, Inc., Groton, Conn.  
Dow Chemical Company, Walnut Creek, CA  
BASF Wyendette Corp., Parsippany, NJ  
American Cyanamid Co., Wayne, NJ  
Shell Development Co., Modesto, CA  
E.I. DuPont de Nemours & Co., Wilmington, Del.  
Velsicol Chemical Corp., Chicago, Ill.  
ICI Americas, Inc., Goldsboro, NC  
Rhone-Poulenc Inc., New Brunswick, NJ  
Cetus, Middleton, WI  
Monsanto Company, St. Louis, MO  
Union Carbide Ag. Products Co., Research Triangle Park, NC  
Rhom-Haas, Spring House, PA

APPENDIX B-2 (a)

a) Employees on University Funds	%FTE
<u>CORI</u>	
Votey, H.L., Director	.40
Shapiro, P., Associate Director	
Smith, T.R., Associate Director	
Staff:	
Hagen, B.R., Administrative Assistant (Career)	1.00
Cornet, J., Principal Clerk (Career)	1.00
Dandona, J., Word Processor (Career)	.50
<u>Universitywide Energy Research Group</u>	
Mead, W.J., Research Economist, Principal Investigator	
Students:	
Denning, M., Research Assistant, 1/1/85-6/30/85	.10
<u>MEXUS</u>	
Perissinotto, G., Program Director	
Students:	
Banuelos, M., Research Assistant, 7/1/84-7/31/84	.01
<u>Santa Barbara Beautification Program</u>	
Johnson, M.A., Academic Coordinator	.04
Clerical:	
Stevenson, D., Lab Assistant, 1/1/85-6/30/85	.05
<u>Water Resources Center</u>	
<u>W-626</u>	
Mercer, L., Research Economist, Principal Investigator	
Morgan, W.D., Research Economist, Principal Investigator	
Students:	
Lathrop, R.C., Postgrad. Res. Economist 7/1/84-7/31/84	.07
Bigley, J.C., Assistant, 4/1/85-6/30/85	.05
<u>W-683</u>	
Caswell, M., Assist. Res. Economist, Principal Invest.	.11
Students:	
Lathrop, R.C., Postgrad. Res. Economist 7/1/84-9/30/84	.12
<u>Center for the Study of Spatial Cognition and Performance</u>	
Klatzky, R., Associate Director	
Pellegrino, J, Associate Director	
Smith, T.R., Associate Director	
Professional:	
Doherty, S., Postgrad. Res. Psychologist 9/1/84-6/30/85 (Career)	.80
Students:	
French, Sara, Assistant	.10
Gruberth, C., Assistant	.09
Keith, A., Assistant	.12
McCloskey, B.P., Research Assistant	.03

APPENDIX B-2 (a) (cont'd)

a) Employees on University Funds

%FTE

Instructional Development

Professionals:

Fisher, S., Research Sociologist, Principal Investigator

Students:

Solomon, D., Assistant, 9/25/84-6/30/85

.03

Iacobellis, J.L., Assistant, 5/1/85-6/30/85

.01

APPENDIX B-2 (b)

b) Employees on Non-University Funds	%FTE
<u>Cal Dept Hlth 84-8382</u>	
Professionals:	
Clingman, E., Assoc. Specialist, 7/1/84-6/30/85 (Career)	1.00
Rust, K., Asst. Specialist, 10/1/84-6/30/85	.31
Students:	
Engstrom, D., Assistant, 7/1/84-12/31/84	.12
Tran Viet, T., Assistant, 7/1/84-6/30/85	.11
MacCaulay, Monica, RA, 7/1/84-6/30/85	.19
Jacobson, S., Data Processor, 7/1/84-6/30/85	.20
Hill, M., Data Processor, 7/1/84-6/30/85	.20
Staff:	
Abdulla, A, Clerk, 10/25/84-11/15/84	.01
Marinko, J., Computer Programmer, 7/1/84-6/30/85 (Career)	1.00
 <u>NSF SES84 00799</u>	
Smith, T., Research Geographer, 8/1/84-8/31/85	.11
Students:	
Zhan, C.K., PGR, 9/12/84-12/31/84	.07
Chow, K. RA, 9/1/84-6/30/85	.28
Liu, Y, PGR, 9/1/84-6/30/85	.26
Pazner, M., PGR, 8/1/84-9/30/84	.16
Chan, C, RA, 9/1/84-9/15/84	.01
Gersho, M., Asst IV, 8/1/84-8/31/84	.03
Menon, S., RA, 1/1/84-6/30/85	.10
Agarwal, P, RA 6/15/85-6/30/85	.03
Joglekar, U., RA 6/01/85-6/30/85	.03
 <u>NSF SES84 12860</u>	
Professionals:	
Phillips, L., Research Economist, 7/1/84-8/31/84	.22
Schniepp, M., Asst. Research Economist, 11/1/84-12/30/84	.03
 <u>NSF SES84 09045</u>	
Professionals:	
Rubinfeld, D., Research Economist, 7/24/84-8/19/84	.11
Bergstrom, T., Visiting Res. Economist, 7/24/84-10/4/84	.33
Students:	
Doublet, JM, RA, 9/5/84-6/30/85	.13
Burnett, R., Asst. III, 2/1/85-1/31/86	
Miller, B., RA, 5/15/85-1/31/86	
Church, JR, RA 6/15/85-6/30/85	.03
 <u>USDJ 841 JCX-0033</u>	
Professionals:	
Votey, HL, Research Economist, 6/15/84-09/8/84	.33
Shapiro, P, Research Economist, 7/06/84-8/31/84	.27
Schniepp, M, Asst. Research Economist, 10/1/84-12/31/84	.02
Students:	
Burnett, RL, Asst III, 10/10/84-6/30/85	.01

APPENDIX B-2 (cont'd)

	%FTE
<u>USDI USGS 2116 2A</u>	
Professionals:	
Smith, TR, Research Geographer, 7/1/84-7/31/84	.11
Estes, JE, Research Geographer	
Peuquet, DJ, Assistant Research Geographer	
Pazner, M., PGR, 7/1/84-9/30/84	.08
Students:	
Chow, K., RA, 7/1/84-9/30/84	.06
Gersho, M., Asst IV, 7/01/84-8/31/84	.05
Solumanipau, I, Asst III, 7/1/84-9/30/84	.07
Liu, Y, RA, 7/1/84-9/30/84	.12
Chen, C, RA, 7/1/84-9/30/84	.05
Zhan, CX, PGR, 8/1/84-9/30/84	.07
<u>Hubner Foundation</u>	
Professionals:	
Marshall, J., Research Economist, 8/1/84-9/30/84	.15
<u>PHS MCJ 063211-01</u>	
Professionals:	
Williams, RL, Assoc. Research Economist, 7/1/84-12/31/84 (Career)	.50
Staff:	
Chen, P, Computer Programmer, 7/1/84-12/31/84 (Career)	.50
<u>NEH ED1374</u>	
Professionals:	
Johnson, GW, Assoc. Research Historian, 8/1/84-12/31/84	.25
Pursell, C., Research Historian, 9/1/84-9/30/84	.01
Students:	
Graves, G, PGR, 9/1/84-12/31/84	.03
Manchuelle, EF, RA, 7/1/84-12/31/84	.03
Kahn, A., PGR, 7/1/84-12/31/84	.12
Askew, GV, RA, 7/1/84-11/30/84	.09
Yew, PR, Asst I, 7/1/84-7/31/84	.01
Staff:	
Stevenson, D., Lab Asst, 7/1/84-12/31/84	.16
<u>UCSB Foundation</u>	
Professionals:	
Johnson, MA, Academic Coordinator, 7/1/84-6/30/85	.02
Staff:	
Stevenson, D., Lab Asst, 1/1/85-6/30/85	.05
<u>UCSB Foundation</u>	
Professionals:	
Fleming, R, Assoc Specialist, 4/1/85-6/30/85	.16
Students:	
Mack, K., PGR, 4/1/85-6/30/85	.03
<u>NIH HD 16378-02</u>	
Professionals:	
Smith, TR, Research Geographer, Principal Investigator	
Students:	
Schwab, M., RA, 6/11/84-7/15/84	.08

APPENDIX B-2 (cont'd)

	%FTE
<u>NEH RT 20213</u>	
Professional:	
Hollister, CW, Principal Investigator	
Fleming, R., Assoc Specialist, 7/1/84-3/31/85 (Career)	.70
Students:	
Mack, K, PGR, 7/1/84-3/31/85	.23
Zukin, J, Lab Asst, 6/16/84-9/30/84	.02
Helm, LB, RA, 8/27/84-6/30/85	.02
Kargaard, BL, Asst II, 9/19/84-6/30/85	.04
Daly, M, RA, 1/1/85-2/28/85	.06
 <u>NIH MCJ 063211-02</u>	
Professionals:	
Williams, RL, Assoc Research Economist, 1/1/85-6/30/85 (Career)	.50
Staff:	
Chen, P, Computer Programmer, 1/1/85-6/30/85 (Career)	.50
 <u>Rockefeller Foundation</u>	
Professionals:	
Borjas, G., Research Economist, Principal Investigator	
Students:	
Huang, WJ, RA, 8/1/84-8/30/84	.01
Singell, LD, PGR, 1/1/85-5/31/85	.10
Williams, AP, RA, 4/1/85-5/31/85	.03
 <u>University of Washington</u>	
Professionals:	
J. Pellegrino, Research Psychologist, Principal Investigator	
Students:	
Alderton, DL, RA, 1/1/85-6/30/85	.25
Abate, RJ, RA, 1/16/85-6/15/85	.25
McDonald TP, RA, 4/1/85-6/30/85	.12
 <u>Toyota Foundation</u>	
Professionals:	
Fukui, H, Research Political Scientist, Principal Investigator	
Students:	
Park, HS, RA, 9/17/84-3/31/85	.13
 <u>Rockefeller Foundation</u>	
Professionals:	
Johnson, GW, Research Historian, 8/1/84-8/31/84	.02
Pursell, C., REsearch Historian, 9/1/84-9/15/84	.02
 <u>NSF SES82 09732</u>	
Professionals:	
P. Shapiro, Research Economist, Principal Investigator	
Students:	
Roberts, J., PGR, 7/1/84-12/31/84	.06

2208	Conference Room	<u>CORI - Economics Department</u> <u>Small Conference Room</u>	437
2212	Conference Room	<u>CORI - Economics Department</u> <u>Large Conference Room</u>	607
2124C	Computer Room	<u>California Department of Health Services</u> <u>Williams, R.L.</u>	192
<u>Ellison Hall</u>			
3709	Research Office	<u>NEH Curriculum Development</u> Johnson, G.W., History Kahn, A., PGR Graves, G., RA Manchuelle, F., RA	120
2704	Research Office	<u>NEH Domesday Book - Hollister, W.</u> Fleming, R., Associate Specialist Ferraro, A., RA Lopez, V., RA	120
5805	Research Office	<u>NEH Domesday Book - Hollister, W.</u> Mack, K., PGR Helm, L.B., RA Daly, M., RA	120