

COMMUNITY AND ORGANIZATION

RESEARCH INSTITUTE

ANNUAL REPORT

1990-1991

Harold L. Votey, Jr.
Director

COMMUNITY AND ORGANIZATION
RESEARCH INSTITUTE

ANNUAL REPORT
JULY 1, 1990 - JUNE 30, 1991

Director: Harold L. Votey, Jr.

Advisory Committee: Steven Weatherford (Chair), Political Science
Harvey Molotch, Sociology
Ron Williams, CORI
Stephen Trejo, Economics
Roberta Klatzky, Psychology
Terry Smith, Geography & Computer Sciences
Anabel Ford, CORI

Chancellor: Barbarbar Uehling, UC Santa Barbara

Vice Chancellor for
Academic Affairs: Gordon G. Hammes

Associate Vice Chancellor
for Research: James Case

THE DIRECTOR'S STATEMENT

Goals and Purposes for Which CORI Was Established

CORI's original charge has been to "serve as a major resource for basic research in the social sciences." Further, "faculty participation in interdisciplinary research" was to be encouraged. This has been interpreted over time to mean that an environment should be created in CORI that encourages, facilitates and administers research activities in the social, behavioral and policy sciences and humanities for members of the UCSB community working both within and across disciplines.

What we expect to be able to do is not only to help to increase the volume of social and behavioral science, humanities and public policy research, but also to do those things that lead to improvements in the quality of the research that is done. This requires providing the sorts of services reaching the campus and centers of learning elsewhere that keep faculty aware of potential research opportunities and providing the incentives and support that are needed to facilitate the generation of sound research proposals and the prompt completion of research that has been funded. Even among researchers who are eminently successful in generating fundable proposals, proposal writing is a tiring and irksome process. Real effort is needed to stimulate as well as encourage faculty to repeatedly put their ideas to the test.

Serving the Academic Needs of the Community

To serve the instructional and research mission of the campus, a number of centers has been established within CORI for groups of faculty with common research interests. Among these is the MesoAmerican Research Center, directed by Anabel Ford. That group has been active in generating research proposals and in generating interest in their work among the public to the extent that substantial sums are being received as gifts to the University to support their research.

Another important operation in CORI is the Health Data Research Facility, directed by Ronald Williams. This group conducts research on perinatal mortality. It manages the data base for the state with respect to neonatal and perinatal mortality and, as a consequence of research to speed the collection of birth and infant death data, has developed the software system by which births are recorded in California and three other states.

A new center in CORI is the Center for Global Studies, directed by Richard Appelbaum, who is also the chairman of the Department of Sociology. The primary activity for this center to date has been a research project directed by Appelbaum that deals with trade and migration flows between countries relating to the production of commodities whose subcomponents may be produced in one or more countries and assembled and marketed from another. Their current focus is on the apparel, electronics and jewelry businesses and the flow of commodities between Asian countries, Mexico and the United States.

The Center for Labor Analysis, directed by Stephen Trejo, in the Department of Economics is another group, primarily economists, with common research interests. Their work focuses on a variety of aspects of the labor market and the decisions individuals make regarding participation in the labor force. One focus of some members of the group is on the choice to participate in crime rather than in legitimate employment.

The Center for the Study of Discourse is another group with a common focus. It is jointly directed by Sandra Thompson, Chairman of the Department of Linguistics, and by John Dubois and Wallace Chafe, of the same department. Other disciplines involved are sociology and psychology.

Other research centers include the Center for Research in Accounting Education, directed by Glenn Owen, the Center for the Study of Business and Public Policy, directed by M. Bruce Johnson, and the Goethe Studies Center, directed by Gerhart Hoffmeister.

On research projects not related to either of these groups, activities are invariably basic research with research and/or policy objectives appropriate to individual disciplines. More often than not, graduate students or undergraduates are involved with all phases of the research, from proposal writing to final reports, so that students get excellent training in all aspects of research.

Response to Needs of the Public at Local, State and National Levels

Most research conducted through CORI from the social sciences and much that comes to CORI from behavioralists and from the humanities has implications for public policy. An example is the work of Llad Phillips and Harold Votey for the National Institute of Justice taking a new look at the potential benefits of policies designed to rehabilitate ex-felons through programs designed to get them back into legitimate jobs. Earlier research had concluded that, because of the observed high rates of recidivism among prison releasees, such programs were a waste of public funds. The Phillips and Votey research is finding that, despite that fact, there are measurable benefits to such programs in the value of the extra crime free time generated by the partial success of such programs. Additionally, they are finding that there is also evidence of specific deterrence from the related imprisonment. Taking full advantage of these findings may help to reduce the high costs imposed on states for detention policies by moderating the way soon to be ex-felons are dealt with.

A continuing contribution to public policy is provided by the Health Data Research Facility. That group has a methodology for evaluating hospital effectiveness in reducing perinatal mortality that continues to attract national interest. Standards have been established that ultimately have met with the approval of local, state and national health authorities in formulating policy to improve their performance. This work continues to receive wide attention in medical journals and the popular press as the results of the research of Dr. Williams and his group's studies are released.

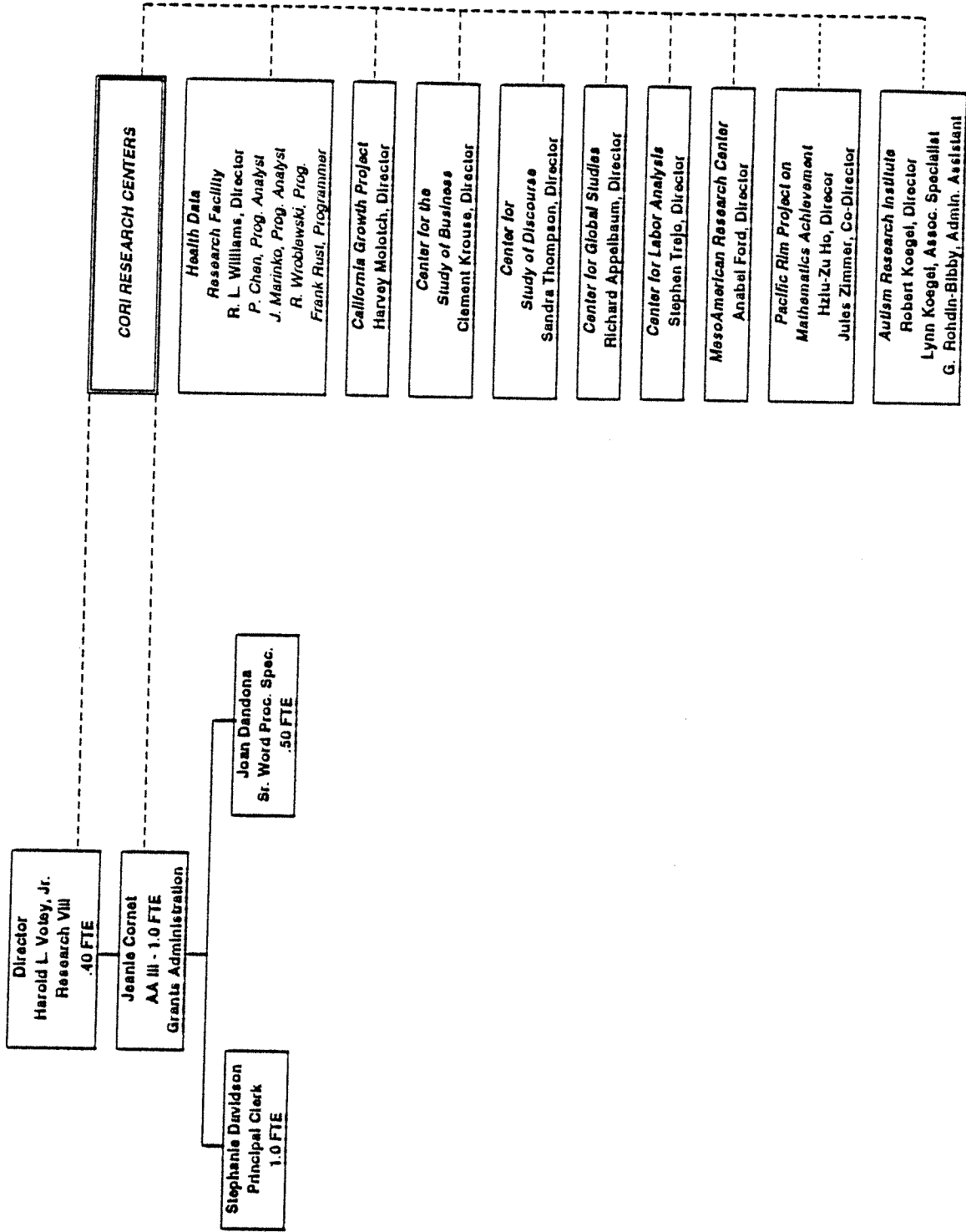
Plans for the Future

Plans for the future in CORI are a matter of searching for and taking advantage of new research opportunities. The main emphasis will be through the centers that involve groups of cooperating faculty. At the same time, we will always be alert to opportunities to expand into new areas. Areas of considerable potential for new research advances in the public policy area are being investigated by a group that proposes to create a center whose primary purpose is to promote and facilitate public policy research. A leader in this effort is Gail Humphreys around whom it is proposed to create an active multidisciplinary group to deal with issues on the local level, but also to be looking at opportunities at the state and national levels.

Other areas that hold potential relate to the University's interest in promoting Pacific Rim related research. A number of CORI researchers have had support from this systemwide research initiative. Over the longer run, it is highly likely that CORI projects will be related to work done by faculty involved with the new School of Environmental Science and Management.

The objective is to maintain and improve upon CORI's long run record of assisting faculty in the social and behavioral sciences and the humanities to generate and find funding for worthwhile projects. Plans for achieving this include continuing to meet with faculty in the relevant departments, offering encouragement, help and incentives to campus members who have good ideas about the generation of new research projects. CORI's focus will always be on helping to clear away obstacles to the development of timely research proposals.

CORI ORGANIZATIONAL CHART - 1990-1991



1990/91 STATISTICAL SUMMARY FOR C.O.R.I.

	1990-91
1. Academic personnel engaged in research	
a. Faculty	28
b. Professional Researchers	4
c. Specialists	6
d. Postdoctorals	
e. Postgraduate Researchers	
TOTAL	38
2. Graduate Students:	
a. employed on contracts and grants	35
b. employed on other sources of funds	
c. participating through assistantships	
d. participating through traineeships	
e. Other(specify)	
TOTAL	
3. Undergraduates	
a. average number of hours/week of student assistance	10
b. number of volunteers, & unpaid interns	
TOTAL	10
4. Participation from outside UCSB	
a. Academics	7
b. Postdoctorals	
c. Postgraduate Researchers	
d. Other (specify)	
5. Staff (Univ. & Non-Univ. Funds)	
a. Technical	
b. Administrative/Clerical	3.5
6. Publications	
7. Seminars, symposia, workshops sponsored	
8. Proposals Submitted	56
9. Number of different awarding agencies dealt with*	27
10. Number of extramural awards administered	40
11. Dollar value of extramural awards administered during year**	2,616,768
12. Number of Principal Investigators***	56
13. Dollar value of other project awards ****	177,315
14. Number of other projects administered	13
15. Total base budget for the year (as of 6/30/91)	179,704
16. Dollar value of intramural support	11,931
17. Total assigned square footage in ORU	7,063
* Count each agency only once (include agencies to which proposals have been submitted).	
** If the award was open during the year, even if for only one month, please include in total.	
*** Number of PIs, Co-PIs and Proposed PIs (count each person only once.)	
****Other projects- such as donations, presidential awards, fellowships: anything that isn't core budget, extramural, or intramural.	

1990/91 SUPPORT FUNDS FOR C.O.R.I.

CORE BUDGET(as of 6/30/91)

	FTE	INCOME AMOUNT
Academic Salaries		
Director	.50	29,480
Stipend		4,200
Other		
Staff Salaries	3.50	63,858
General Assistance		7,665
Employee Benefits		31,895
Supplies & Expense		23,250
Other		19,356
TOTAL CORE BUDGET 1990-91		179,704
TOTAL CORE FTE 1990-91		

RECHARGE/INCOME ACCOUNT	ACTUAL INCOME
Academic Salaries	
Staff Salaries	
General Assistance	
S&E	
Benefits	
Other	
TOTAL RECHARGE	(5,060.00)

SALES OF PUBLICATIONS

INTRAMURAL FUNDING*

FOR: PERSON/PROJECT	SOURCE OF FUNDS	INCOME AMOUNT
Appelbaum/CFGS	OR	2,000
Ford/Maya Ceramic	OR	2,500
Mithun/Chumash Language	OR	2,000
Thompson et al/Discourse	OR	2,000
Deacon/Prop. Dvlpmt.	OR	1,000
Ford/NSF prop.	Humanities Cntr	1,000
Fisher	Affirm. Action	1,431
TOTAL INTRAMURAL FUNDING		11,931
OTHER INCOME (specify)	Carry Foward from 89/90	19,045
TOTAL AMOUNT OF SUPPORT FUNDS FOR THE YEAR		205,620

*Include all temporary funds such as Research Committee Awards, ORDA seed or matching funds, Chancellor's Discretionary, Affirmative Action allocations, etc.
Please do not include funds which were processed by Contracts and Grants

CORI CENTERS

Center for Labor Analysis

Core Participants: Steven Trejo
Stephen Bronars
Ed Funkhouser
Jeffrey Grogger
Llad Phillips
Harold L. Votey, Jr.

The Center for Labor Analysis seeks to encourage interaction among UCSB researchers in the field of labor economics. Broadly defined, labor economics studies the decisions of individuals regarding how to allocate their time among market and nonmarket uses and the decisions of firms regarding how to employ workers in producing goods and services. The Center fosters labor research in two ways: by maintaining and updating an inventory of the large, publicly-available data sets (e.g., Census, Current Population Survey, National Longitudinal Survey, etc.) that have become indispensable for doing empirical research in labor economics, and by organizing a seminar series in which prominent outside scholars as well as UCSB researchers present the results of their recent work. In addition to making seminar presentations, visitors meet with faculty and graduate students on a one-on-one basis in order to share ideas and discuss ongoing research projects. The core group of researchers who regularly participate in the labor economics seminar series include Steve Briners, Ed Funkhouser, Jeff Grogger, Llad Phillips, Jack Votey and Steve Trejo, as well as various graduate students writing dissertations in labor economics. Depending upon the topic and speaker, other faculty and graduate students from the Department of Economics also attend the seminars.

Center for the Study of Business and Public Policy

Core Participants: William S. Comanor
Stephen DeCanio
Ted Frech
M. Bruce Johnson
Clement G. Krouse

The Center is intended stimulate discourse and research in matters of business and public policy by:

creating a forum for scholarly research in applied economics

sponsoring occasional papers and seminars on problems of particularly importance

encouraging the exchange of experience and ideas between those involved in academic research and professional practice and,

providing a research environment and funding support for graduate-level students.

Center for Global Studies

Director: Richard P. Appelbaum

Advisory Board: William J. Ashby

Elliot A. Butler-Evans

John A. Ernest

Sarah Fenstermaker

Nancy e. Gallacher

Richard Hecht

Gerhart Hoffmeister

Cynthia S. Kaplan

John A. Marcum

Mattison Mines

Georgio Persssinotto

Jati K. Sengupta

Kuo-Ch'ing Tu

Mayfair Yang

Daniel B. Botkin

Edward I. Donnerstein

John E. Estes

Haruhiro Fukui

Michael Goodchild

Paul Hernadi

Immanual C. Y. Hsu

Suzanne J. Levine

Connie McNeely

Lester Monts

Gerard Pigeon

Sandra Thompson

Harold L. Votey, Jr.

The Center focuses attention on these processes of globalization that are transforming virtually every aspect of our daily lives. Its primary objective is to promote globally-oriented, multi-disciplinary research in the social sciences and humanities, including both basic and policy oriented research. The Center will identify all existing research on campus whose focus is global in nature, relocating such research to the Center (if appropriate). It will also bring faculty members together to exchange research findings, whereby providing an important campus resource for helping faculty to generate new ideas (and new research proposals). Other functions will eventually include maintaining and up-to-date inventory of all faculty on campus whose research is global in nature, providing technical assistance to faculty who seek extramural funding for globally oriented research, publishing a newsletter, and sponsoring periodic lectures and colloquia.

The Center is establishing ties with other UCSB institutions and activities that contribute to this mission. These include the Simonett Center (formerly National Center for Geographical Information and Analysis), part of whose mission is to extend spatial thinking and analysis to the social sciences; the Economy and Society group, which crosscuts four social science departments; the Global Peace and Security Program; the Education Abroad Program, which could possibly provide a vehicle for research exchanges abroad. It will attempt to relate to the Marine Sciences Institute, insofar as its research projects include global socioeconomic concerns; and Jim Kennett's UCSB Global Change Program, which--although physically-oriented-- is concerned as well with what the NSF calls the "Human Dimensions of Global Environmental Change."

Center for the Study of Discourse

Co-Directors: Sandra A. Thompson and John Du Bois

The Center for the Study of Discourse, established in 1989, was conceived to be a focus for the Linguistics Department's project to establish a Corpus of Spoken American English, as well as for ongoing research in the area of discourse across campus. The Center aims to coordinate and serve as a clearing house for interdisciplinary approaches to discourse research; to this end, the Center sponsors lectures and social events throughout the academic year. Several joint research projects are currently underway.

Autism Research Center

Robert Koegel, Director

Project for Family Support for children with Autism: This project focuses on supporting the families of children with autism, and in developing techniques for utilizing the families' strengths as resources in teaching. It yields techniques that result in fast, economical and broad teaching gains. The project also focuses on developing techniques that reduce child dependency upon their parents, and on interventions that result in increased autonomy for the child and reduced stress for the family as a whole. The project results in products aimed at teaching self-management skills to the children. As a result the center focuses not only on utilizing the entire family as a resource for treatment gains, but also on heavily involving the child as an active part of their own treatment by incorporating variables such as child choice over activities, natural, child-selected reinforcers, etc. Thus, teaching products are produced that enhance child independence and increase productive family functioning and decrease stress.

Project for Community-referenced nonaversive Technology for Severe Problem Behaviors: This multi-site project coordinated through the University of Oregon, with sites at the University of California at Santa Barbara, the State University of New York at Stony Brook, San Francisco State University, and the University of South Florida, adds numerous training resources. It consists of the following areas: strategies for assessing behavior problems; strategies for nonaversive behavioral programming; strategies for promoting generalization and maintenance of treatment gains; and strategies for implementing nonaversive technologies in school and community settings. The center produces numerous curriculum modules designed to facilitate the use of nonaversive techniques and support procedures. The project also conducts six separate training functions to insure that inservice and preservice strategies are used to achieve maximal implementation of research results. The center supports a national clearinghouse, organizes national conferences, regional workshops, and national collaborations with professionals from throughout the United States. The center utilizes the most advanced behavioral theory available, and provides the needed marriage of service values with procedural sophistication. IT results in products that are of immediate use to policy makers, families, teachers, service providers, and persons with severe disabilities who live in unacceptable situations due to our frequent inability to adequately address their difficult problem behaviors.

MesoAmerican Research Center

Director: Anabel Ford

The MesoAmerican Research Center (MARC) embraces social science research in Mexico and Central America and well as issues of immigration from the Mesoamerican region to the United States. The goals of the center are to advance research in the area of Mesoamerica and disseminate research results within the scientific and public areas of Mesoamerica and disseminate research results within the scientific and public arenas. Active research includes anthropologists, archaeologists, linguists, and historians conducting research in Mexico, Belize, Guatemala, Honduras, and El Salvador. MARC sponsors conferences, symposia, and workshops at UCSB and in Mesoamerica. Such events as the conference on the language of Maya Hieroglyphs held at UCSB, the symposium on the results of the Belize River Archaeological Settlement Survey presented to the International Congress of Mayistas in Mexico, and the Maya Ceramic Workshop cosponsored with the Government of Belize in Belize are among MARC's programs.

Pacific Rim Project on Mathematics Achievement

Participants: Hsiu-Zu Ho, Director

Jules Zimmer, Co-Director

Chiang-Pei Wang, Beijing Institute of Education, Beijing, China

Soy-Yung Chiu, National Education College, Taipei, Taiwan

Yasuo Nakazawa, Shirayuri College, Tokyo, Japan

This research unit is concerned with cross-national investigations of factors that influence mathematics achievement in China, Japan, Taiwan, and the United States. Factors examined include demographic variables, related cognitive abilities, mathematics curriculum, and attitudes, expectations, and beliefs of parents, teachers and students. Our investigations are focussed on within-nation as well as between-nation variation.

California Growth Project

Participants: Harvey Molotch, Director

Kee Warner, Graduate Student, Sociology

Amy Lategola, Graduate Student, Sociology

Mary Texiera, Graduate Student, Sociology (UC Riverside)

Catherine Oaks, Undergraduate student

Caroline White, Undergraduate student

Rebecca Wypseck, Undergraduate student

The California Growth Project has been involved in studies of the effects of growth control on the economy and housing stock of California communities. The primary focus has been a comparison of the land use regulations of Santa Barbara county, the City of Santa Monica, and the cluster of cities making up western Riverside County. Funded by the California Policy Seminar (a joint initiative of the State government and the University of California), the project seeks results that will help guide state and local land use policy-making.

Health Data Research Facility

*Participants: Ron Williams, Director
Peter Chen, Programmer Analyst
John Marinko, Programmer Analyst
Roger Wroblewski, Programmer
Julie Kluss, Secretary*

Over the last decade, the Health Data Research Facility has become internationally known as a center for applied research using vital statistics. The Health Data Research Facility is recognized as a source of expertise in the growing field of perinatal epidemiology, and has been credited with providing greater validity to the use of vital statistics records as a source of data for medical research. The Facility's short run objectives are to continue its development, implementation and dissemination of AVSS software in California, and to further enhance research methods for generating the data for research on births and perinatal and neonatal mortality.

WORKSHOPS, SEMINARS, COLLOQUIA

Econometrics Seminars 1990-1991

Fall Quarter

- October 3: Jeff Grogger, UC Santa Barbara
"The Effect of Criminal Justice Contacts on the Labor Market Outcomes of Young Men"
- October 10: Any Weiss, University of Southern California
"Modeling the Severity of Head Injury in Motorcycle Accidents"
- October 24: Frank Deibold, University of Pennsylvania
"Have Postwar Economic Fluctuations Been Stabilized?"
- November 7: Hal White, UC San Diego
"Nonparametric Regression with Neural Network Models"
- November 14: Hashem Pesaran, UC Los Angeles
"Persistence, Cointegration, and Aggregation"

Winter Quarter

- February 27: Mahmood El 'Gamal, Cal. Tech.
"Bayesian and Classical Methods in Semiparametrics"

Spring Quarter

- March 14: Jim Powell, University of Chicago
"An Overview of Semiparametric Results"
- March 21: Jim Stock, UC Berkeley
"Constructing Confidence Bounds for the Largest Root in an Autoregressive Process"
- April 10: Peter Phillips, Yale University
"To Criticize the Critics: An Objective Bayesian Analysis of Stochastic Trends"
- April 17: Whitney Newey, Massachusetts Institute of Technology
"Semiparametric Calculation of the Exact Consumer Surplus"

Labor Economic Workshops - 1990-1991

Spring Quarter

- March 11: Donald Deere, Texas A & M University
"Monopoly Profits, Tobin's Q, and the Efficiency of Union Contracting"
- April 8: Alan Krueger, Princeton University
"The Effect of Computers on the Wage Structure"
- May 6: Robert Valletta, UC Irvine
"Unions and Municipal Employment"
- May 13: Elizabeth Peters, University of Colorado
"The timing of Fertility and Women's Return to the Labor Force"
- May 20: Michael Keane, University of Minnesota
"On the Estimation of Panel Data Models"
- June 4: Isaac Ehrlich, SUNY Buffalo
"Intergenerational Trade, Longevity, and Economic Growth"
- June 10: Steve Trejo, UC Santa Barbara
"Overtime Pay, Overtime Hours, and Labor Unions"

RESEARCH IN PROGRESS
JULY 1990-JUNE 1991

LUC ANSELIN, Principal Investigator

The Importance of Spatial Effects in Applied Regression Analysis in Regional Science and Geography (Collaborative Research with Daniel A. Griffith)

National Science Foundation: NSF SES87-21875

This research is addressing several methodological issues dealing with spatial dependence and spatial heterogeneity. It will emphasize the development of accessible software and its dissemination to the profession. The research is an integrative effort between Daniel Griffith, a spatial statistician, and Luc Anselin, a spatial econometrician.

LAWRENCE BADASH, Principal Investigator

Tale of a Nuclear Winter

National Science Foundation: NSF DIR 90-12305

This grant is studying the story of nuclear winter's discovery, evolution, popularization, and scientific and policy controversies. From the published literature and from interviews with scientists, this study will highlight different views of how science and scientists should appear before the public, and when it is appropriate to urge action by the government based on scientific knowledge.

WILLIAM T. BIELBY & DENISE BIELBY, Principal Investigators

From Market to Hierarchy: Industrial Change and the Employment Relation in Television Production

National Science Foundation: NSF SES89-10039

The principal investigators are studying how changing industrial and organization context, technology, and business conditions shape the organization of work and careers in prime time television production. In particular, they are focusing on the causes and consequences of a shift in the television writer's employment relation from *market*-based freelance arrangements to *hierarchically*-based staff arrangements. Hypotheses are derived from transaction cost theories of industrial organization, models of cumulative advantage in career trajectories, and recently developed approaches to the study of the production of popular culture.

GEORGE BORJAS & STEPHEN TREJO, Principal Investigators

Immigrants and Welfare Participation

Sloan Foundation: Sloan 89-10-12

This research project has been studying the propensity of immigrant households to participate in the U.S. welfare system. Primarily using the 1970 and 1980 Censuses, the principal investigators are assessing such aspects of the immigrant welfare experiences as the differences in welfare participation behavior among immigrant cohorts and national origin groups, as well as between immigrants and natives; the role played by interstate variation in welfare programs in determining immigrant welfare participation; and the "penchant" for welfare participation among immigrant households who qualify for welfare.

GEORGE BORJAS, Principal Investigator

Immigration to the United States: 1940-1980

National Science Foundation: NSF SES-88-09281

The Principal Investigator has analyzed the performance of immigrants in the US labor market in five Censuses (1940-1980) to calculate how changes in US immigration policy affect the skill composition of immigrant cohorts. This project has generalized the economic model of immigration to allow for the possibility that incoming migrants make "mistakes" and thus return migration flows are generated.

FREDERICK J. BOVE, Principal Investigator

Ceramic Analysis of Guatemalan Archaeological Materials

National Science Foundation: NSF BNS-89-11580

This research focuses on changes in ceramic resource procurement practices and exchange relations associated with the Formative-Classic transition on the Escuintla, Guatemala coastal plain. The main research effort has been directed toward characterizing ceramic raw materials and pastes of Terminal Formative and Classic period pottery from the Nahualate, Madre Vieja, Coyolate, Acomé, and Achiguate drainages.

MARGRIET CASWELL, Principal Investigator

The Interaction Between Water Prices, Application Rates, Contaminated Drainwater, and Irrigation Technology Adoption

This research's primary objective is to predict the probability of a grower who faces certain environmental and economic conditions using a modern or traditional irrigation system. From these predictions, estimates of water use and rain flows can be made for a wide range of water price policy alternatives.

ANABEL FORD, Principal Investigator

Maya Ceramic Workshop

Council for International Exchange of Scholars: CIES Ford 6/91

Funds for this project supported a "round table" workshop in San Ignacio, Cayo, Belize in June 1991. A group of archaeologists met to reevaluate the ceramic analytical methods used by Maya archaeologists across the Maya region, including Guatemala, Honduras, Belize and Mexico. The workshop brought together for the first time, Mesoamerican scholars to discuss and resolve the significant chronological problems in the Maya area of ceramics in the Maya area.

ANABEL FORD, Principal Investigator

Making Ends Meet: An Examination of the Ancient Maya

Department of Education/Fullbright Hayes: PO19A00025-90

This research will refine a previously developed predictive model of settlement patterns of the ancient Maya in the Belize River area that is based on soil characteristics and topography. In addition, the research will design an archaeological resource management program that can be used in Belize and adapted for other areas of archaeological importance.

ANABEL FORD, Principal Investigator
Maya Development in the Upper Belize River Area
National Science Foundation: NSF BNS-9024104

The Belize River Archaeological Settlement Survey (BRASS), located in the eastern periphery of the central Maya lowlands has developed an important settlement survey and excavation data base pertaining to domestic activities as reflected in residential middens. This research supports the phase of broad horizontal residential unit excavation of previously tested units. The collection from these residential units are providing a basis for accurately describing and interpreting the organization of residential production and consumption activities in the Maya area.

ANABEL FORD, Principal Investigator
Obsidian Production and Distribution in the Maya Area
Wenner-Gren Foundation for Anthropological Research

Recently gathered data from settlement survey and residential unit test excavations in the Belize River area have identified craft specialization at the household level, including a unique obsidian production locus. By focusing on excavations at this obsidian production locus and consumer households, the research is concentrating on the organization of obsidian toll production and consumption at the household level in the Maya lowlands, analyzing the role of specialization in the development of social complexity.

HARUHIRO FUKUI, Principal Investigator
M. STEPHEN WEATHERFORD, Co-Principal Investigator
Problems of Economic and Defense Policy Coordination Between the United States and Japan

UC Pacific Rim Research Program: Pac Rim - Fukui
This project was originally funded by the UC Pacific Rim Research Program in 1988-89 and the funding has since been extended three times, until June 30, 1992. With a view to explaining the tangled relations between the two economic powers with the aid of current international relations theories, a team of scholars from UC and other universities investigated and drafted papers on US-Japanese negotiations in three policy areas: exchange rate (Fukui and Weatherford); semiconductor trade (Takahiro Miyao and David Potter); and the FSX dispute (Masashi Nishihara and David Potter). The three papers and an additional one by Charles Stuart on the tax systems in the two countries are currently being edited for publication in book form.

REGINALD GOLLEDGE, Principal Investigator
JACK LOOMIS, Co-Principal Investigator
NATHAN GALE, Co-Principal Investigator
Integrating Spatial Knowledge: Transition from Route to Configurational Knowledge
National Science Foundation: NSF SES-87-20597

This research examines the process of spatial knowledge acquisition and integration. The researchers have compared the performance of children ages 9-12 and adults in a series of experiments in an effort to better detail the development of spatial understanding from egocentric and landmark-based knowledge to allocentric route-based knowledge.

and finally to a more general, comprehensive and configurational knowledge of spatial structure.

ROGER INGHAM, Principal Investigator

Time Interval Investigations of Stuttering Measurement

Nat'l Institute on Deafness: PHS 1 R01 DC00060-01A1

The goal of this research is to develop a reliable method for measuring chronic stuttering in the continuous speech of persons with this speech disorder. Studies are being undertaken that will investigate procedures that will possible lead via the use of artificial neural networks to identifying intervals of speech that reliable judges agree contain stuttering.

ROBERT KOEGEL, Principal Investigator

Research in Autism - Parent Intervention

National Institute of Mental Health: NIMH R01 MH28210

This is an ongoing project that is based on the hypothesis that the most productive parent training avenue for the treatment of autism will be one that involves the child as a major component in the treatment delivery. The research compares a control treatment of a typical parent training approach in which parents are taught to manage their children's behavior with a new parent-training approach in which the parents are taught to include their child as a central part of the treatment delivery through self-management techniques.

ROBERT KOEGEL, Principal Investigator

Community-Referenced Technologies for Nonaversive Behavior

University of Oregon, Subcontract: OSE G00087C0234

This project, currently in its fourth year of funding, is continuing development of the research and training center to instruct families and students in management techniques for autistic children.

JACK LOOMIS, Principal Investigator

R. G. GOLLEDGE, Co-Principal Investigator

ROBERTA KLATZY, Co-Principal Investigator

J. W. PELLEGRINO, Co-Principal Investigator

Analysis of Navigation Without Sight

National Institute of Health: 5 R01 EY07022

This is the third of funding for a three year study of non-visually guided navigation by blind and blindfolded observers. Data collected from tasks performed over the previous two years by congenitally blind, adventitiously blind and sighted subjects are being analyzed to better understand perception of distance and heading changes, and cognitive representation of surrounding space and transformations of this representation during locomotion.

DEAN MANN, Principal Investigators

Institutional Issues in Water Banking in the Central Valley of California

Water Resources Center: W-723

This project has been studying the institutional issues affecting water banking in southern San Joaquin Valley. The issues involve definitions of water rights, the apportionment of costs for project facilities and for stored water, impacts on parties not involved in the storage project, possible litigation resulting from failure to comply with contractual obligations, indemnification for damages, and possible exportation of stored water to Southern California.

WALTER MEAD, Principal Investigator

TASK 3: Working with the Appraisal System

US Department of Agriculture: USDA 40328701062

This project is analyzing whether using delivered log costs (DLC), delivered log bid (DLB) and their ratio as a valid criteria for Forest Service use is an improvement over current methods and standards of the appraisal system. The data used for the analysis is the population of timber sales in Region 6 over the 1983-1989 period.

LLOYD MERCER, Principal Investigator

DOUGLAS MORGAN, Co-principal Investigator

Proposal for Economic Studies for the Bay/Delta Hearings of the California Water Resources Control Board

California Water Resources Board: WRC 9-179-300.0

The purpose of this contract is to provide the California Water Resources Control Board with an evaluation of economic and financial impacts of possible changes in the availability of water for various segments of the California economy that could result from actions taken by the Board in connection with the Bay-Delta Proceedings which are considering revising the standards contained in the existing Water Quality Control Plan for the Sacramento-San Joaquin Delta and Suisun Marsh Plan.

LLOYD MERCER, Principal Investigator

DOUGLAS MORGAN, Co-principal Investigator

Water District Financing and the Cost of Water in California

California Department of Health: CDH 88-94949

The principal investigators have been studying alternative methods of financing the construction, installation, and operation of new water treatment technologies. The work has included extensive analysis of the sources of revenue available and projected to be available to public water systems to meet current and future expenses.

MARIANNE MITHUN, Principal Investigator

Barbareno Chumash Grammar

National Science Foundation: NSF BNS-9011018

The goal of this project is to prepare a functionally-based reference grammar of Barbareno Chumash. The research participants have organized manuscripts and have been entering them into a computer in a form that can be sorted by a concordance program, making it possible to extract all instances of morphemes in the corpus, in

context, with literal and free translations. During the final year of the project, these studies will be worked into a comprehensive grammar of the Barbareno Chumash language.

HARVEY MOLOTCH, Principal Investigator

Growth Control: Inner Workings and External Effects

California Policy Seminar: CPS Molotch

Through a case study investigation of three Southern California urban areas (Santa Barbara, Santa Monica and Riverside), this research is investigating the degree to which existing growth controls actually curtail local development. By better understanding how growth control operates in different localities, State policy makers will be in able to encourage policies which optimize the distribution, scale, and quality of growth in California's future.

JAMES PELLEGRINO, Principal Investigator

Computer Assessment of Complex Cognitive Abilities

University of Washington: U WASH 711232

This research involves nine projects subcontracted with the University of Washing which is studying the development of computer based tests of complex cognitive performance. The nine projects include three that focus on individual differences in tasks varying in complexity along a single dimension of information processing, and six projects focusing on individual differences in tasks varying in complexity along two dimensions of information processing.

LLAD PHILLIPS, Principal Investigator

HAROLD L. VOTEY, JR., Co-principal Investigator

Recidivism Criteria and the Determination of Best Policy: An Investigation of NIJ Data

National Institute of Justice

The central focus of this project is to evaluate alternative criminal justice policies to reduce recidivism by analyzing an extensive data set generated by an earlier NIJ project. The data for three cities, Boston, Chicago and San Diego, will be used to examine how the choice of a criterion variable can affect decisions in regard to policies that may lead to substantial saving in the social costs of treating recidivists.

JOHN SUTTON, Principal Investigator

The Dynamics of Denominationalism in American Protestantism, 1890-1980

Lilly Endowment Incorporated

LILLY ENDOWMENT 900123

The purpose of this project is to understand the patterns of denominationalism in American Protestantism from the period 1890 to 1990. The Principal Investigator is gathering a data set on the formation of American Protestant denominations by analyzing the life histories of 175 mainstream Protestant denominations. This information will specifically focus on schisms through which new denominations were created, and mergers, through which old denominations were dissolved. This quantitative life history data will be supplemented with contextual information about specific merger and schism events from archival and secondary sources.

JOHN SUTTON, Principal Investigator
The Dynamics of Denominationalism in America
National Science Foundation
NSF SES-90008994

The funds from this grant have been used to develop an exceptionally detailed data set on the life histories of mainstream Protestant denominations as outlined above in the Lilly Foundation grant. The data set will be placed in a public archive which will be made available to other researchers at the end of the study period..

RONALD WILLIAMS, Principal Investigator
Maternal and Child Health Data base
California Department of Health: MCH 90-10485

Research on the Maternal and Child Health Database continues. Efforts will be concentrating on maintaining and augmenting the hospital specific MCH Database for California cities. An updated Maternal and Child Health Data Base Statistical Appendix and Descriptive Narrative will be made available at the end of the funding period.

RONALD WILLIAMS, Principal Investigator
AVSS Technical Assistance
California Department of Health
CA HLTH 90-10213

This is a renewal of a project to provide for the planning, implementing and operating of the Automated Vital Statistics System (AVSS) in California. AVSS is a software program designed to automate the registration of births and is currently being used in approximately 22 local registration districts. The research group is providing assistance to users in installing, updating and maintaining the software.

MAYFAIR YANG, Principal Investigator
Voluntary Associations and the Emergence of Civil Society in China
National Science Foundation
NSF BNS-9057505

This Presidential Young Investigator Award project is in its second year of funding. During this funding period, the Principal Investigator has been concentrating on two fieldsites and two fieldwork topics. The first topic has focused on the lineage organization and ritual revival in a rural town outside the city of Wenzhou, Zhejiang Province and the second on film criticism and reception among the masses in urban and rural Xi'an, Shaanxi Province.

PUBLICATIONS

BIELBY, WILLIAM T., & BIELBY, DENISE

Papers Presented

"Producing Prime Time: Organizational Concentration and the Diversity of Network Television Programming." Presented at the American Sociological Association, Washington, D.C. August 1990. (Bielby, Williams, and Bielby, Denise).

FORD, ANABEL

Publications

"Prehistoric Agricultural Landscape of the Central Maya Lowlands: An Examination of Local Variability in a Regional Context." *World Archaeology*, 22: 21-33, 1990 (with Scott Fedick).

"Maya Settlement in the Belize River Area: Variations in Residential Patterns of the Central Maya Lowlands." Contribution to *Pre-Columbian Population History in the Maya Lowlands*, edited by T. P. Culbert and D. S. Rice. University of New Mexico Press: Albuquerque, pp. 167-181, 1990.

"The Status of Women in Mesoamerican Archaeology." In *The Archaeology of Gender: Proceedings of the Twenty-Second Annual Conference of the Archaeology Association of the University of Calgary*, edited by Dale Walde and Noreen Willows. University of Calgary Archaeology Association: Calgary, 1990.

"Examen de *The Cities of Ancient Mexico: Reconstructing a Lost World*, by J. A. Sabloff." *Mesoamérica*, 20, pp. 338-340, 1990.

"Examen de *A Postclassic Perspective: Excavations at the Maya Site of Santa Rita Corozal, Belize*, by D. Z. Chase and A. F. Chase; and *Investigations at the Classic Maya City of Caracol, Belize 1985-1987*, by A. F. Chase and D. Z. Chase." *Mesoamérica* 21, pp. 144-146, 1991.

"Evidence of Economic Variation of Ancient Maya Residential Settlement in the Upper Belize River Area." *Ancient Mesoamerica*, 2, pp. 35-46, 1991.

Manuscripts: Submitted/In Progress

"Ceramic Analysis: From Form to Cultural Interpretation." Submitted to *Ceramica*, 1991 (with Lady Harrington).

Ancient Maya Obsidian Procurement, Production, and Distribution: Theoretical and Methodological Issues (Anabel Ford, General Editor). Submitted to *Ancient Mesoamerica*.

Problems in the Identification of Traditional Ceramic Production in the Archaeological Record." Submitted to *American Antiquity*, 1991 (with Lucy J. Lucero).

"Organización Económica y Política en la Zona del Alto Río Belice." Submitted to *Mesoamérica*.

"Reconocimiento Arqueológico en la Zona Río Belice: Reconocimiento Regional y Excavaciones de Prueba del Proyecto BRASS." Submitted to *Mayab*, Universidad de Madrid, España.

Programme for Belize: Archaeological Resource Potential and Management of the Río Bravo Conservation Area, Orange Walk, Belize." Submitted to *Journal of the University of Belize College*, 1991 (with Scott Fedick).

- "Settlement Patterns and Population Dynamics: A Reevaluation of Population Estimates for the Central Maya Lowlands. *American Anthropologist*, in revision.
- "The Belize River Archaeological Settlement Survey: A Five-Year Regional Program. Accepted by *Journal of Belizean Affairs*, 1991 (with Scott Fedick).

Papers Presented

- "Ancient Maya Settlement Dynamics and Environmental Variability in the Central Maya Lowlands: A View from the Rural Component." *Archaeology and Dynastic History of Tikal*. Maya Hieroglyphic Workshop Symposium, University of Texas, Austin, 1990.
- "Residential Land Use, Social Status, and Consumption: The Methodological Foundation for the Second Phase of the Belize River Archaeological Settlement Survey." 56th Annual Meetings of the Society for American Archaeology, New Orleans, 1991.
- "Critical Resource Control and the Rise of the Classic Period Maya." *Conference of Ancient Maya Agriculture and Biological Resource Management*, University of California, Riverside, 1991.

FUKUI, HARUHIRO

In Preparation

- "Problems of Economic and Defense Policy Coordination Between Japan and the United States." In preparation.

MOLOTCH, HARVEY

Publications

- "Growth Under Growth Controls." *Urban Affairs Quarterly*. In progress, (with Kee Warner).

KOEGEL, ROBERT

Publications

- "Using Self-Monitoring to Increase Students' Success and Independence." *Teaching Exceptional Children*, 23, 17-22, 1991 (with L. K. Dunlap, G. Dunlap, and L. K. Koegel).
- "Assessing and Training Parents in Teaching Pivotal Behaviors." In R. Prinz (ed.), *Advances in Behavioral Assessment of Children and Families*. London: Jessica Kingsley Publishers Ltd., pp 65-82, 1991 (with L. K. Koegel and L. Schreibman).
- "Positive Affect of Parents of Autistic Children: A Comparison Across Two Teaching techniques." *Behavior Therapy*, 22, pp. 479-490, 1991.
- "Extended Reductions in Stereotypic Behaviors Through Self-Management in Multiple Community Settings." *Journal of Applied Behavior Analysis*, 23, pp. 119-127, 1990 (with L. Koegel).

"Infantile Autism." In A. S. Bellack, M. Hersen, and A. E. Kazdin (eds.), *International Handbook of Behavior Modification and Therapy (2nd Edition)*. New York: Plenum Publishing Company, 1990 (with L. Schreibman, M. H. Charlop, and a. L. Egel).

"Toward a Technology of 'nonaversive' Behavior Support." *Journal of the Association for Persons with Severe Handicaps*, 15, 133-135, 1990 (with r. H. Horner, G. Dunlap, E.G. Carr, W. Sailor, J. Anderson, R. W. Albin, and R. E. O'Neill).

TREJO, STEVE

Publications

"Immigrant Participation in the Welfare System." *Industrial and Labor Relations Review*, 44, pp. 195-211,

VOTEY, HAROLD L., JR.

Publications

"Employment, Age, Race and Crime: A Labor Theoretic Investigation.": *Journal of Quantitative Criminology*, 2, pp. 123-154, 1991.

WEATHERFORD, STEPHEN

In Preparation

"Problems of Economic and Defense Policy Coordination Between Japan and the United States." In preparation.

CORI SPACE ALLOCATION

NORTH HALL

1013	Research Office Square Feet: 158 Dr. Harold L. Votey, Jr.
1015	Research Office Square Feet: 158 Dr. Llad Phillips
2201	CORI Administrative Office Square Feet: 237 CORI Administrative Staff
	2202 CORI Copy Room/Computer Room Square Feet 250
2204	Research Office Square Feet 250 Ron Williams
2205	Research Office Square Feet: 124 Dr. Perry Shapiro
2206	Conference Room Square Feet: 360
2207	Research Office Square Feet: 264 Dr. Ron Williams
2208	Conference Room Square Feet: 439
2209	Research Office Dr. Ron Williams
2213	Conference Room Square Feet: 175
2213a	Subject Lab Square Feet: 89 ft Drs. J. Loomis, R. Golledge, R. Klatzky
2213b:	Research Office Square Feet: 130 Dr. Yutaka Kanayama
2213c	Research Office

ELLISON HALL

- 2704 Research Office
 Square Feet: 143
 Dr. John Sutton
- 5805 Research Office
 Square Feet: 119
 Dr. Warren Hollister

GIRVETZ HALL

- 1306 Research Office
 Square Feet: 199
- 1307 Research Office
 Square Feet: 138
 Dr. Jeffrey Grogger
- 1308 Conference Room
 Square Feet: 203
- 1309 Research Office
 Square Feet: 141
 Center for the Study of Discourse
- 1310 Storage/Copy Room
 Square Feet: 100
- 1311 Research Office
 Square Feet: 141
 Drs. Williams & Denise Bielby
- 1312 Research Office
 Square Feet: 203
 MesoAmerican Research Center
- 1313 Computer Room
 Square Feet: 141
- 1314 Research Office
 Square Feet: 203
 MesoAmerican Research Center
- 1315 Research Office
 Square Feet: 141
 Dr. Marianne Mithun
- 1316-18 Research Laboratory
 Square Feet: 203
 MesoAmerican Research Center
- 1317 Research Office
 Square Feet: 141
 Dr. Frederick Bove
- 1319 Research Office
 Square Feet: 141
 Dr. Walter Mead

- 1320 Research Office
 Square Feet: 203
- 1321 Research Office
 Square Feet: 141
 California Growth Project
- 1322 Research Office
 Square Feet: 199
 Pacific Rim Project
 on Mathematics Achievement

Rm 2202 Sq fr = 250 Cmptr./ Strg.	Copy Room
Room 2204 Sq ft = 250	
Room 2206 Sq ft = 360	
Room 2208 Sq ft = 439	

Room 2201 Sq ft = 237	2201B Sq ft = 93
Rm 2205 Sq ft = 124	Rm 2201A Sq ft = 124
Room 2207 Sq ft = 264	
Room 2209 Sq ft = 439	
Rm 2213 Sq ft = 175	2213C Sf = 130
2213A Sf = 89	2213B Sf = 130

Room 1013 Sq ft = 158
Rm 1015 Sq ft = 158
Room 1017 Sq ft = 158

North Hall
Total Rooms = 17
Total Sq ft = 3578

Ellison Hall Rm 2704 Sq ft = 143
Rm 5805 Sq ft = 119

Total Rooms = 2
Total Sq ft = 262

Rm 1306 Sq. ft = 199
Rm 1308 Sq. ft = 203
Rm1310A Rm 1310 Sq ft=100 Sq ft=100
Rm 1312 Sq ft = 203
Rm 1314 Sq ft = 203
Rm 1316 Sq ft = 203
Rm 1318 Sq ft = 203
Rm 1320 Sq ft = 203
Rm 1322 Sq ft = 199

Rm 1307 Sq. ft = 138
Rm 1309 Sq ft = 141
Rm 1311 Sq ft = 141
Rm 1313 Sq ft = 141
Rm 1315 Sq ft = 141
Rm 1317 Sq ft = 141
Rm 1319 Sq ft = 141
Rm 1321 Sq ft = 141
Rm 1323 Sq ft = 141
Rm 1325 Sq ft = 141

Girvetz Hall
Total Rooms = 20
Total Sq ft = 3223