

**COMMUNITY AND ORGANIZATION
RESEARCH INSTITUTE**

**ANNUAL REPORT
1991-1992**

**HAROLD L. VOTEY, JR.
DIRECTOR**

**UNIVERSITY OF CALIFORNIA
SANTA BARBARA, CA 93106**

**COMMUNITY AND ORGANIZATION
RESEARCH INSTITUTE**

**ANNUAL REPORT
JULY 1, 1991 - JUNE 30, 1992**

Director: Harold L. Votey, Jr.

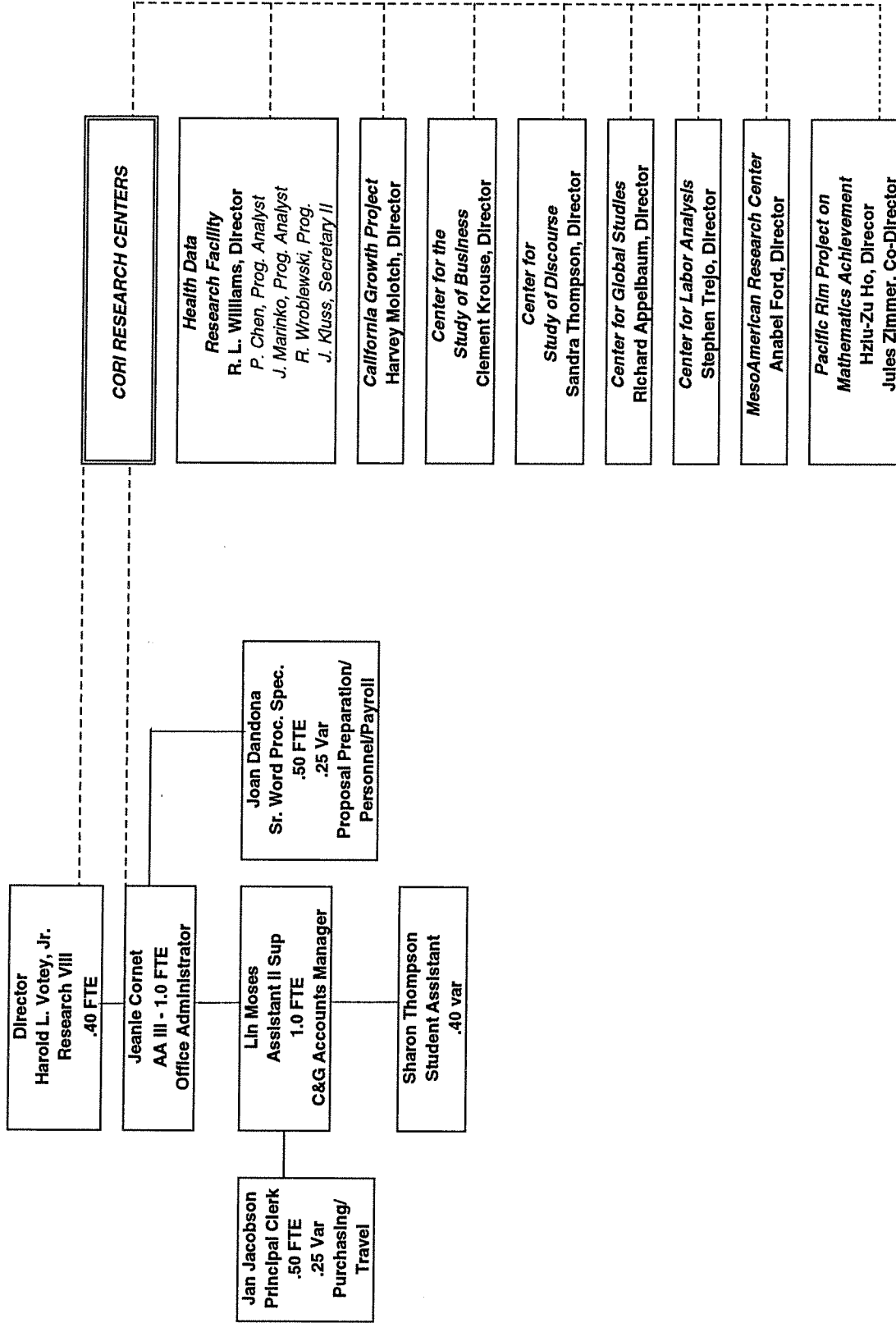
Administrative Staff: Jeanie Cornet, Office Manager
Lin Moses, Accounts Manager
Joan Dandona, Proposal Preparation/Personnel
Jan Jacobson, Travel/Purchasing

1991-92
Advisory Committee: Harvey Molotch, (Chair), Sociology
Anabel Ford, CORI
Roberta Klatzky, Psychology
Terry Smith, Geography & Computer Sciences
John Sutton, Sociology
Stephen Trejo, Economics
Steven Weatherford, Political Science
Ron Williams, CORI

Chancellor: Barbara Uehling, UC Santa Barbara

Vice Chancellor for
Academic Affairs: Murray L. Schwartz

Associate Vice Chancellor
for Research: James F. Case



COMMUNITY AND ORGANIZATION RESEARCH INSTITUTE

ORGANIZATIONAL CHART - 1991-1992

THE DIRECTOR'S STATEMENT

Goals and Purposes for Which CORI Was Established

CORI's original charge has been to "serve as a major resource for basic research in the social sciences." Further, "faculty participation in interdisciplinary research" was to be encouraged. This has been interpreted over time to mean that an environment should be created in CORI that encourages, facilitates and administers research activities in the social, behavioral and policy sciences and humanities for members of the UCSB community working both within and across disciplines.

What we expect to be able to do is not only to help to increase the volume of social and behavioral science, humanities and public policy research, but also to do those things that lead to improvements in the quality of the research that is done. This requires providing the sorts of services to faculty and professional researchers that keep them aware of potential research opportunities and then providing the incentives and support that are needed to facilitate the generation of sound research proposals. Even among researchers who are eminently successful in generating fundable proposals, proposal writing is a tiring and irksome process. Real effort is needed to stimulate as well as encourage faculty to repeatedly put their ideas to the test. Then our job is to provide the assistance and guidance that turns effort into fundable proposals. Finally, we must be able to provide grants administration that make for the efficient conduct of research.

Serving the Academic Needs of the Community

To serve the instructional and research mission of the campus, a number of centers have been established within CORI for groups of faculty with common research interests. Among these is the Health Data Research Facility, directed by Ronald Williams. This group conducts research on perinatal mortality. It manages the data base for the state with respect to neonatal and perinatal mortality and, as a consequence of research to speed the collection of birth and infant death data, has developed the software system by which births are recorded in California and three other states.

Another important operation in CORI is the MesoAmerican Research Center, directed by Anabel Ford. That group has been active in generating research proposals and in generating interest in their work among the public to the extent that substantial sums are being received as gifts to the University to support their research.

A center in CORI just getting well established is the Center for Global Studies, directed by Richard Appelbaum, who completed a term as chairman Department of Sociology. The primary activity for this center to date has been a research project directed by Appelbaum that deals with trade and migration flows between countries relating to the production of commodities whose subcomponents may be produced in one or more countries and assembled and marketed from another. Their current focus is on the apparel, electronics and jewelry businesses and the flow of commodities between Asian countries, Mexico and the United States.

The Center for Labor Analysis, directed by Stephen Trejo, in the Department of Economics is another group, primarily economists, with common research interests. Their work focuses on a variety of aspects of the labor market and the decisions individuals make regarding participation in the labor force. One focus of some members of the group is on the choice to participate in crime rather than in legitimate employment.

The Center for the Study of Discourse is another group with a common focus. It is jointly directed by Sandra Thompson, Chairman of the Department of Linguistics, and by John Dubois and Wallace Chafe, of the same department. Other disciplines involved are sociology and psychology. Thompson, DuBois and Chafe are just getting underway with a challenging project funded by NEH that reflects well on the efforts of the group.

Other research centers include the Center for Research in Accounting Education, directed by Glenn Owen, the Center for the Study of Business and Public Policy, directed by M. Bruce Johnson, and the Goethe Studies Center, directed by Gerhart Hoffmeister.

On research projects not related to either of these groups, activities are invariably basic research with research and/or policy objectives appropriate to individual disciplines. More often than not, graduate students or undergraduates are involved with all phases of the research, from proposal writing to final reports, so that students get excellent training in all aspects of research.

Response to Needs of the Public at Local, State and National Levels

Most research conducted through CORI from the social sciences and much that comes to CORI from behavioralists and from the humanities has implications for public policy. An example is the work of Llad Phillips and Harold Votey recently completed for the National Institute of Justice taking a new look at the potential benefits of policies designed to rehabilitate ex-felons through programs designed to get them back into legitimate jobs. Earlier research had concluded that, because of the observed high rates of recidivism among prison releasees, such programs were a waste of public funds. The Phillips and Votey research is finding that, despite that earlier funding, there are measurable benefits to such programs in the value of the extra crime free time generated by the partial success of rehabilitation efforts. Additionally, they are finding that there is also evidence of specific deterrence from the related imprisonment. Taking full advantage of these findings may help to reduce the high costs imposed on states for detention policies by moderating the way soon to be ex-felons are dealt with prior to and immediately following release from prison.

A continuing contribution to public policy is provided by the Health Data Research Facility. That group has a methodology for evaluating hospital effectiveness in reducing perinatal mortality that continues to attract national interest. Standards have been established that ultimately have met with the approval of local, state and national health authorities in formulating policy to improve their performance. This work continues to receive wide attention in medical journals and the popular press as the results of the research of Dr. Williams and his group's studies are released.

Plans for the Future

Plans for the future in CORI are a matter of searching for and taking advantage of new research opportunities. The main emphasis will be through the centers that involve groups of cooperating faculty. At the same time, we will always be alert to opportunities to expand into new areas. Areas of considerable potential for new research advances in the public policy area were being investigated vigorously by a group that proposed to create a center whose primary purpose is to promote and facilitate public policy research. The leader in this effort was Gail Humphreys around whom it was proposed to create an active multidisciplinary group to deal with issues on the local level, but also to be looking at opportunities at the state and national levels. The initiative had to be put on hold when Gail's work failed to receive sufficient support and she accepted a very DuBois competing position. Interest continues in funding a way to effectively encourage more public policy research at UCSB.

Other areas that hold potential relate to the University's interest in promoting Pacific Rim related research. A number of CORI researchers have had support from this systemwide research initiative. Over the longer run, it is highly likely that CORI projects will be related to work done by faculty involved with the new School of Environmental Science and Management.

The objective is to maintain and improve upon CORI's long run record of assisting faculty in the social and behavioral sciences and the humanities to generate and find funding for worthwhile projects. Plans for achieving this include continuing to meet with faculty in the relevant departments, offering encouragement, help and incentives to campus members who have good ideas about the generation of new research projects. CORI's focus will always be on helping to clear away obstacles to the development of timely research proposals.

CORI CENTERS

Center for Labor Analysis

Core Participants: Steven Trejo
Stephen Bronars
Ed Funkhouser
Jeffrey Grogger
Llad Phillips
Harold L. Votey, Jr.

The Center for Labor Analysis seeks to encourage interaction among UCSB researchers in the field of labor economics. Broadly defined, labor economics studies the decisions of individuals regarding how to allocate their time among market and nonmarket uses and the decisions of firms regarding how to employ workers in producing goods and services. The Center fosters labor research in two ways: by maintaining and updating an inventory of the large, publicly-available data sets (e.g., Census, Current Population Survey, National Longitudinal Survey, etc.) that have become indispensable for doing empirical research in labor economics, and by organizing a seminar series in which prominent outside scholars as well as UCSB researchers present the results of their recent work. In addition to making seminar presentations, visitors meet with faculty and graduate students on a one-on-one basis in order to share ideas and discuss ongoing research projects. The core group of researchers who regularly participate in the labor economics seminar series include Steve Briners, Ed Funkhouser, Jeff Grogger, Llad Phillips, Jack Votey and Steve Trejo, as well as various graduate students writing dissertations in labor economics. Depending upon the topic and speaker, other faculty and graduate students from the Department of Economics also attend the seminars.

Center for the Study of Business and Public Policy

Core Participants: William S. Comanor
Stephen DeCanio
Ted Frech
M. Bruce Johnson
Clement G. Krouse

The Center is intended stimulate discourse and research in matters of business and public policy by:

- creating a forum for scholarly research in applied economics
- sponsoring occasional papers and seminars on problems of particularly importance
- encouraging the exchange of experience and ideas between those involved in academic research and professional practice and,
- providing a research environment and funding support for graduate-level students.

Center for Global Studies*Director: Richard P. Appelbaum**Advisory Board: William J. Ashby**Elliot A. Butler-Evans**John A. Ernest**Sarah Fenstermaker**Nancy e. Gallacher**Richard Hechtt**Gerhart Hoffmeister**Cynthia S. Kaplan**John A. Marcum**Mattison Mines**Georgio Perssinotto**Jati K. Sengupta**Kuo-Ch'ing Tu**Mayfair Yang**Daniel B. Botkin**Edward I. Donnerstein**John E. Estes**Haruhiro Fukui**Michael Goodchild**Paul Hernadi**Immanual C. Y. Hsu**Suzanne J. Levine**Connie McNeely**Lester Monts**Gerard Pigeon**Sandra Thompson**Harold L. Votey, Jr.*

The Center focuses attention on these processes of globalization that are transforming virtually every aspect of our daily lives. Its primary objective is to promote globally-oriented, multi-disciplinary research in the social sciences and humanities, including both basic and policy oriented research. The Center will identify all existing research on campus whose focus is global in nature, relocating such research to the Center (if appropriate). It will also bring faculty members together to exchange research findings, whereby providing an important campus resource for helping faculty to generate new ideas (and new research proposals). Other functions will eventually include maintaining and up-to-date inventory of all faculty on campus whose research is global in nature, providing technical assistance to faculty who seek extramural funding for globally oriented research, publishing a newsletter, and sponsoring periodic lectures and colloquia.

The Center is establishing ties with other UCSB institutions and activities that contribute to this mission. These include the Simonett Center (formerly National Center for Geographical Information and Analysis), part of whose mission is to extend spatial thinking and analysis to the social sciences; the Economy and Society group, which crosscuts four social science departments; the Global Peace and Security Program; the Education Abroad Program, which could possibly provide a vehicle for research exchanges abroad. It will attempt to relate to the Marine Sciences Institute, insofar as its research projects include global socioeconomic concerns; and Jim Kennett's UCSB Global Change Program, which--although physically-oriented-- is concerned as well with what the NSF calls the "Human Dimensions of Global Environmental Change."

Center for the Study of Discourse

Co-Directors: Sandra A. Thompson and John Du Bois

The Center for the Study of Discourse, established in 1989, was conceived to be a focus for the Linguistics Department's project to establish a Corpus of Spoken American English, as well as for ongoing research in the area of discourse across campus. The Center aims to coordinate and serve as a clearing house for interdisciplinary approaches to discourse research; to this end, the Center sponsors lectures and social events throughout the academic year. Several joint research projects are currently underway.

Autism Research Center

Robert Koegel, Director

Project for Family Support for Children with Autism: This project focuses on supporting the families of children with autism, and in developing techniques for utilizing the families' strengths as resources in teaching. It yields techniques that result in fast, economical and broad teaching gains. The project also focuses on developing techniques that reduce child dependency upon their parents, and on interventions that result in increased autonomy for the child and reduced stress for the family as a whole. The project results in products aimed at teaching self-management skills to the children. As a result the center focuses not only on utilizing the entire family as a resource for treatment gains, but also on heavily involving the child as an active part of their own treatment by incorporating variables such as child choice over activities, natural, child-selected reinforcers, etc. Thus, teaching products are produced that enhance child independence and increase productive family functioning and decrease stress.

Project for Community-referenced Nonaversive Technology for Severe Problem Behaviors: This multi-site project coordinated through the University of Oregon, with sites at the University of California at Santa Barbara, the State University of New York at Stony Brook, San Francisco State University, and the University of South Florida, adds numerous training resources. It consists of the following areas: strategies for assessing behavior problems; strategies for nonaversive behavioral programming; strategies for promoting generalization and maintenance of treatment gains; and strategies for implementing nonaversive technologies in school and community settings. The center produces numerous curriculum modules designed to facilitate the use of nonaversive techniques and support procedures. The project also conducts six separate training functions to insure that inservice and preservice strategies are used to achieve maximal implementation of research results. The center supports a national clearinghouse, organizes national conferences, regional workshops, and national collaborations with professionals from throughout the United States. The center utilizes the most advanced behavioral theory available, and provides the needed marriage of service values with procedural sophistication. It results in products that are of immediate use to policy makers, families, teachers, service providers, and persons with severe disabilities who live in unacceptable situations due to our frequent inability to adequately address their difficult problem behaviors.

MesoAmerican Research Center

Director: *Anabel Ford*

The MesoAmerican Research Center (MARC) embraces social science research in Mexico and Central America and well as issues of immigration from the Mesoamerican region to the United States. The goals of the center are to advance research in the area of Mesoamerica and disseminate research results within the scientific and public arena of Mesoamerica and disseminate research results within the scientific and public arenas. Active research includes anthropologists, archaeologists, linguists, and historians conducting research in Mexico, Belize, Guatemala, Honduras, and El Salvador. MARC sponsors conferences, symposia, and workshops at UCSB and in Mesoamerica. Such events as the conference on the language of Maya Hieroglyphs held at UCSB, the symposium on the results of the Belize River Archaeological Settlement Survey presented to the International Congress of Mayistas in Mexico, and the Maya Ceramic Workshop cosponsored with the Government of Belize in Belize are among MARC's programs.

Pacific Rim Project on Mathematics Achievement

Participants: *Hsiu-Zu Ho, Director*

Jules Zimmer, Co-Director

Chiang-Pei Wang, Beijing Institute of Education, Beijing, China

Soy-Yung Chiu, National Education College, Taipei, Taiwan

Yasuo Nakazawa, Shirayuri College, Tokyo, Japan

This research unit is concerned with cross-national investigations of factors that influence mathematics achievement in China, Japan, Taiwan, and the United States. Factors examined include demographic variables, related cognitive abilities, mathematics curriculum, and attitudes, expectations, and beliefs of parents, teachers and students. Our investigations are focussed on within-nation as well as between-nation variation.

California Growth Project

Participants: *Harvey Molotch, Director*

Kee Warner, Graduate Student, Sociology

Amy Lategola, Graduate Student, Sociology

Mary Texiera, Graduate Student, Sociology (UC Riverside)

Catherine Oaks, Undergraduate student

Caroline White, Undergraduate student

Rebecca Wypseck, Undergraduate student

The California Growth Project has been involved in studies of the effects of growth control on the economy and housing stock of California communities. The primary focus has been a comparison of the land use regulations of Santa Barbara county, the City of Santa Monica, and the cluster of cities making up western Riverside County. Funded by the California Policy Seminar (a joint initiative of the State government and the University of California), the project seeks results that will help guide state and local land use policy-making.

Health Data Research Facility

Participants: Ron Williams, Director

Peter Chen, Programmer Analyst

John Marinko, Programmer Analyst

Roger Wroblewski, Programmer

Julie Kluss, Secretary

Over the last decade, the Health Data Research Facility has become internationally known as a center for applied research using vital statistics. The Health Data Research Facility is recognized as a source of expertise in the growing field of perinatal epidemiology, and has been credited with providing greater validity to the use of vital statistics records as a source of data for medical research. The Facility's short run objectives are to continue its development, implementation and dissemination of AVSS software in California, and to further enhance research methods for generating the data for research on births and perinatal and neonatal mortality.

WORKSHOPS, SEMINARS, COLLOQUIA

Econometrics Seminars 1991-1992 - Douglas Steigerwald, Workshop Coordinator

Fall Quarter

- October 2: Glenn Sueyoshi, UC San Diego
"Structural Group Effects Models and Panel Data"
- October 9: Whitney Newey, Massachusetts Institute of Technology
"Two-Step Series Estimation of Sample Selection Models"
- October 16: Girish Aras, UC Santa Barbara
"Sequential Nonparametric Estimation of an Optimal Age Replacement Policy"
- October 23: Nick Keifer, Cornell University
"Measurement Error in the Empirical Job Search Model"
- October 30: Aman Ullah, UC Riverside
"Finite Sample Econometrics with Normal and Non-Normal Er"
- November 6: Simon Potter, UC Los Angeles
"Nonlinear Impulse Response Functions"
- November 13: David Brownston, UC Irvine
"Multiple Imputation for Missing Data"
- December 4: Doug Steigerwald, UC Santa Barbara
"The Effects of Taxes on Investment in the U.S."

- Spring Quarter James Chu, University of Southern California
"Econometric Methodology"

Labor Economics Workshops - 1991-1992 Steve Trejo, Workshop Coordinator

Spring Quarter

- March 6: Tom Holmes, University of Wisconsin
"Business Transfer and Industry Evolution"
- April 6: Steve Trejo, UC Santa Barbara
"Does the Statutory Overtime Premium Discourage Long Workweeks?"

- April 13: Jim Walker, University of Wisconsin
"The Effect of Parental Benefits on Life Cycle Fertility and Female Labor Supply"
- April 27: Bruce Fallick, UC Los Angeles
"The Demand for New Labor by Expanding Industries"
- May 11: John DiNardo, UC Irvine
"Alcohol, Marijuana, and American Youth: The Unintended Consequences of government Regulations"
- June 1: Eric Eide, UC Santa Barbara
"Intergenerational Trade, Longevity, and Economic Growth"
- June 10: Steve Trejo, UC Santa Barbara
"The Choice of College Major and Increasing College Wage Premiums"

***Conference on the Report of the Universitywide Task Force on Faculty Rewards ("Pister Report") - February 6, 1992-
Gail Humphrey, Conference Coordinator***

An all-day conference funded by a gift from the Carnegie Foundation, was held this February at UC Santa Barbara on the Report of the Universitywide Task Force on Faculty Rewards (the "Pister Report"). Faculty and administration leaders from each of the UC campuses and central administration met with Dr. Ernest Boyer, President of the Carnegie Foundation for the Endowment of Teaching, to discuss and debate the appropriate responsibilities and focus of UC faculty. A list of conference participants is below.

CONFERENCE ON THE REPORT OF THE
UNIVERSITYWIDE TASK FORCE ON FACULTY REWARDS
("PISTER REPORT")

February 6, 1992
Engineering II Conference Room
9:00 a.m. - 5:30 p.m.

Conference Participants

Norman Abrams, Vice Chancellor, Academic Personnel, and Professor,
Law (UCLA)
William M. Banks, Professor, African-American Studies (UCB)
Paul Bartlett, Professor, Chemistry (UCB)
Rosina Becerra, Professor, Social Welfare (UCLA)
Ernest L. Boyer, President, The Carnegie Foundation for the
Advancement of Teaching
W. Elliot Brownlee, Vice Chair, Academic Council, and Professor,
History (UCSB)
Michael D. Butler, Dean, Undergraduate Studies, and Associate
Professor, Social Sciences (UCI)
Nanette Caldararo, Assistant Vice Chancellor, Academic Personnel
(UCSD)
Patricia Cohen, Associate Professor, History, and Chair, Women's
Studies Program (UCSB)
Stephen D. Cox, Associate Professor, Literature (UCSD)
David Culler, Assistant Professor, Computer Science (UCB)
Andrew Doe, Professor, Theater Arts (UCSC)
Ivan Evans, Assistant Professor, Sociology (UCSD)
Hardy Frye, Faculty Assistant, Academic Affairs (Office of the
President)
Patricia Gandara, Assistant Professor, Education (UCD)
Barbara Gerbert, Chair, Faculty Council, School of Dentistry,
and Associate Professor, Dental Public Health and Hygiene (UCSF)
Robert D. Gibson, Associate Vice Chancellor, Student Academic
Affairs (UCSF)
Joseph L. Graves, Assistant Professor, Ecology and Evolutionary
Biology (UCI)
Susan Hackwood, Dean, College of Engineering (UCR)
Anne D. Kilmer, Chair, Academic Senate, and Professor, Assyriology/
Near Eastern Studies (UCB)
Elaine Kim, Professor, Asian Studies (UCB)
Elise Knittle, Assistant Professor, Earth Sciences (UCSC)
Kurt Kreith, Chair, Committee on Academic Personnel, and Professor,
Mathematics (UCD)
Gary Leal, Professor and Chair, Chemical and Nuclear Engineering
(UCSB)
Howard M. Lenhoff, Professor, Developmental and Cell Biology (UCI)
Katja Lindenberg, Professor, Chemistry, and Chair, UCSD Task Force
on Faculty Reward System (UCSD)
Britt-Marie E. Ljung, Associate Professor, Clinical Pathology
(UCSF)
Francisco Lomeli, Professor, Spanish and Portuguese (UCSB)
Carol Lovatt, Associate Professor, Plant Physiology (UCR)
Bernd Magnus, Professor, Philosophy (UCR)

William Margaretten, Associate Dean, Academic Affairs, School of
Medicine, and Professor, Pathology (UCSF)
Christina Maslach, Professor, Psychology (UCB)
Leon Mayhew, Senior Advisor to Chancellor/Special Assistant to
Provost (UCD)
Susan Mazer, Assistant Professor, Biological Sciences (UCSB)
Duncan Mellichamp, Chair, Academic Senate, and Professor, Chemical
Engineering (UCSB)
Robert Middlekauff, Professor, History (UCB)
Marcia Millman, Professor and Chair, Sociology (UCSC)
Calvin Moore, Associate Vice President, Academic Affairs (Office of
the President), and Professor, Mathematics (UCB)
Rachel Moran, Professor, Law (UCB)
Kathryn Norberg, Professor, History, and Director, Women's Studies
Program (UCLA)
Myron Okada, Associate Director, Academic Personnel (Office of the
President)
Jone L. Pearce, Associate Dean and Associate Professor, Graduate
School of Management (UCI)
Mary Carol Perrott, Assistant Vice Chancellor, Academic Personnel
(UCI)
John Phillips, Professor, History (UCR)
Robert Pippin, Professor and Chair, Philosophy (UCSD)
Karl L. Pister, Interim Chancellor (UCSC), and Chair, Universitywide
Task Force on Faculty Rewards
David Porter, Professor, Pathology, School of Medicine (UCLA)
Susan Prager, Dean, School of Law (UCLA)
Melvin Ramey, Professor, Engineering, and Member, Universitywide
Task Force on Faculty Rewards (UCD)
Ramon Rhine, Chair, Committee on Academic Personnel, and Professor,
Psychology (UCR)
Alexander Rosenberg, Professor and Chair, Philosophy (UCR)
Jeffrey Russell, Chair, Committee on Academic Personnel, and
Professor, History (UCSB)
Murray L. Schwartz, Interim Vice Chancellor, Academic Affairs
(UCSB), and Professor Emeritus, Law (UCLA)
Andrew Scull, Professor and Chair, Sociology (UCSD)
Caesar Sereseres, Associate Dean, Undergraduate Studies, and
Associate Professor, Political Science (UCI)
Daniel Simmons, Chair, Academic Senate, and Professor, Law (UCD)
Harold Simon, Professor and Chief, Division of International
Health/Cross-Cultural Medicine, and Member, Universitywide Task
Force on Faculty Rewards (UCSD)
Nancy Stoller, Associate Professor and Chair, Community Studies
(UCSC)
Ellen Switkes, Assistant Vice President, Academic Personnel and
Affirmative Action (Office of the President)
Carol Tomlinson-Keasey, Vice Provost for Faculty Relations (UCD
eff 7/92)
Steven Wallace, Assistant Professor, Public Health (UCLA)
Delois P. Weekes, Assistant Professor, Family Health Care Nursing
(UCSF)
Michael O. Woodburne, Professor, Geology, and Chair, Department of
Earth Sciences (UCR)
Julius Zelmanowitz, Associate Vice Chancellor, Academic Personnel, and
Professor, Mathematics (UCSB)
Cedric Robinson, Professor, Political Science (UCSB)

TOTAL AWARDED: \$66,956**INDIRECT COSTS:\$20,377****7/1/89-3/31/92**

The principal investigators are studying how changing industrial and organization context, technology, and business conditions shape the organization of work and careers in prime time television production. In particular, they are focusing on the causes and consequences of a shift in the television writer's employment relation from *market*-based freelance arrangements to *hierarchically*-based staff arrangements. Hypotheses are derived from transaction cost theories of industrial organization, models of cumulative advantage in career trajectories, and recently developed approaches to the study of the production of popular culture.

GEORGE BORJAS & STEPHEN TREJO, Principal Investigators*Immigrants and Welfare Participation***Sloan Foundation: Sloan 89-10-12****TOTAL AWARDED: \$48,531****INDIRECT COSTS:****\$6,197****11/1/89-4/30/92**

Using microdata from the 19770 and 1980 U.S. Censuses, this research analyzed in depth the large differences in welfare reciprocity that exist across immigrant households classified according to national origin, year of arrival, and years in the United States. Such an approach yields insights about the effects of cohort and assimilation not available from previous studies.

FREDERICK J. BOVE, Principal Investigator*State Evolution on the South Coast of Guatemala***National Science Foundation: NSF BNS91-08925****TOTAL AWARDED: \$77,080****INDIRECT COSTS:****\$16,435****7/15/91-8/31/93**

Previous research on the Pacific Coast of Guatemala has produced evidence of the local development of an early state-like polity centered at Balberta which gave way to a more permanent regional organization by the Late Classic period. This project is designed to examine the unit by focusing on social and political variables as expressed in settlement pattern changes and economic variables dealing with production and exchange, and relationships to the greater sociopolitical context. A two year field and laboratory project of regional survey, mapping, and methodological excavations will provide a body of data to comprehend the origins of the state in this poorly known area.

PATRICIA CLANCY, Principal Investigator*The Specialization of Affect in Japanese and Korean Children***The Spencer Foundation: SPENCER/CLANCY****TOTAL AWARDED: \$7,592****INDIRECT COSTS:****-0-****8/1/91-10/31/92**

The goal of this research is to establish the basic empirical facts concerning the language socialization of affect in Japanese and Korean early verbal interactions, and to develop and refine a methodology for the coding and analysis of linguistic expressions of affect in these language. The analysis focuses on the linguistic means used to express affect,

maternal elicitation of and reaction to children's expression of affect, and the interactive functions of expressions of affect across contexts.

WILLIAM COMANOR, Principal Investigator

Competition Policy in a Global Economy

The Japan Foundation: AR91-0051

TOTAL AWARDED: \$146,847 INDIRECT COSTS: -0-
3/1/92-12/31/93

This project brings together leading scholars in Japan, the USA, the European Community and Canada in a project aimed at analyzing conflicts in domestic competition policies and designing a set of policy alternatives to ease real frictions and to improve trade and FDI flows and innovations. The research will analyze the underlying economic and strategic meaning of domestic competition law in a global economy.

WILLIAM COMANOR, Principal Investigator

Universitywide Energy Research Group: UERG/Comanor

TOTAL AWARDED: \$439 INDIRECT COSTS: -0-

ROBERT DEACON, Principal Investigator

Political Stability, Security of Tenure, and Natural Resource Conservation in Developing Countries

National Science Foundation: NSF SES91-21859

TOTAL AWARDED: \$38,418 INDIRECT COSTS: \$11,253
4/1/92-3/31/93

This research is studying the way tropical forests are used in developing countries, and will assess empirically the importance stable political and legal institutions to observed measures of the way these resources are used. Empirical analysis, based on the theoretical framework, will compare the principal hypothesis to two alternatives, that tropical deforestation and similar phenomena are caused by the process of economic growth, and that the primary cause of these outcomes is population pressure.

ANABEL FORD, Principal Investigator

Maya Ceramic Workshop

Council for International Exchange of Scholars: CIES Ford 6/91

TOTAL AWARDED: \$11,226 INDIRECT COSTS: -0-
4/15/91-3/31/92

Funds for this project supported a "round table" workshop in San Ignacio, Cayo, Belize in June 1991. A group of archaeologists met to reevaluate the ceramic analytical methods used by Maya archaeologists across the Maya region, including Guatemala, Honduras, Belize and Mexico. The workshop brought together for the first time, Mesoamerican scholars to discuss and resolve the significant chronological problems in the Maya area of ceramics in the Maya area.

ANABEL FORD, Principal Investigator

Maya Development in the Upper Belize River Area

National Science Foundation: NSF BNS-9024104

TOTAL AWARDED: \$36,007 **INDIRECT COSTS: \$3,458**
4/15/91-3/31/92

The Belize River Archaeological Settlement Survey (BRASS), located in the eastern periphery of the central Maya lowlands has developed an important settlement survey and excavation data base pertaining to domestic activities as reflected in residential middens. This research supports the phase of broad horizontal residential unit excavation of previously tested units. The collection from these residential units are providing a basis for accurately describing and interpreting the organization of residential production and consumption activities in the Maya area.

ANABEL FORD, Principal Investigator

Household Economic Organization and Community Integration: The Basis of Social Complexity in the Central Maya Lowlands

National Science Foundation: NSF BNS91-21701

TOTAL AWARDED: \$61,878 **INDIRECT COSTS: \$13,247**
1/1/92-11/30/93

Building on a solid regional data base on the archaeological settlement in the Belize River area, this research is developing an interpretation of the operation of regional, local and community tiers of ancient Maya society. This is being accomplished through completion of intensive excavations at representative residential units and evaluation of production and consumption within and between major landform zones by residential size and rank.

ANABEL FORD, Principal Investigator

Environmental and Social Distinctions in Chipped Stone Assemblage at Residential Units in the Belize River Area (REU Supplement to Grant No. BNS-9121701)

National Science Foundation: NSF DBS-912701

TOTAL AWARDED: \$4,000 **INDIRECT COSTS: -0-**
3/1/92-6/30/93

Undergraduate honors student Greg Morre will examine the chipped stone assemblages from ancient Maya house sites in relationship to settlement location and residential wealth and/or status. His work will be in collaboration with the Dr. Ford's work in the BRASS project.

HARUHIRO FUKUI, Principal Investigator

LOWELL DITTMER, Co-Principal Investigator

Informal Politics, Democracy, and Patterns of Economic Development in China, Japan, South Korea, and Taiwan

UC Pacific Rim Research Program: PAC RIM/FUKUI

TOTAL AWARDED: \$57,293 **INDIRECT COSTS: -0-**
7/1/90-6/30/93

This project is designed to investigate forms and functions of informal politics, i.e., politics not subject to control by formal authorities. In the first phase, (1991-92), a set of papers were prepared on informal politics of elite recruitment in China, Japan, South Korea, and Taiwan. A joint symposium was held in Hong Kong in August 1992 and

papers presented at the symposium are being revised for future publication. Further research is being carried out and another joint symposium is planned for the coming year.

HSIU-ZU HO, Principal Investigator

JULES ZIMMER, Co-Principal Investigator

An Investigation of Stable and Modifiable Factors that Influence Mathematical Achievement

UC Pacific Rim Research Program: PacRim/HO-ZIMMER

TOTAL AWARDED: \$29,024 INDIRECT COSTS: -0-
7/1/89-6/30/92

Research continues on the acquiring of mathematical achievement in children. Students in Japan, China and the United States are being studied.

ROGER INGHAM, Principal Investigator

Time Interval Investigations of Stuttering Measurement

National Institute on Deafness: PHS 1 R01 DC00060-01A1

TOTAL AWARDED: \$404,044 INDIRECT COSTS: \$104,789
12/1/90-11/30/93

The goal of this research is to develop a reliable method for measuring chronic stuttering in the continuous speech of persons with this speech disorder. Studies are being undertaken that will investigate procedures that will possible lead via the use of artificial neural networks to identifying intervals of speech that reliable judges agree contain stuttering.

MICHAEL JOCHIM, Principal Investigator

The German Mesolithic/Neolithic Transition

National Science Foundation: NSF BNS91-05463

TOTAL AWARDED: \$15,776 INDIRECT COSTS: \$3,451
6/15/91-6/30/92

The main goal of this research is to undertake excavations at the newly discovered Late or Terminal Mesolithic site of Henauhof NW-2 in southern Germany. The project will test hypotheses about the nature of forager-farmer contact and its precedents, and relate these to propositions about the processes underlying the Mesolithic-Neolithic transition in this area.

MICHAEL JOCHIM, Principal Investigator

Regional Settlement Systems in Southwest Germany

National Science Foundation: NSF BNS92-01023

TOTAL AWARDED: \$42,450 INDIRECT COSTS: \$9,286
2/1/92-1/31/93

This project is the initial phase of a long-term study of regional patterns of settlement and land use during the Paleolithic, Mesolithic and Neolithic of southwestern Germany. This first phase has two components: 1) the development of a database of archaeological, environmental, paleoenvironmental, and modern land use information for a 40 x 100 kilometer study area extending from the Danube south to the Alps; and 2) a surface survey of a 45 square kilometer portion of the study area adjacent to the Federsee.

CYNTHIA KAPLAN, Principal Investigator

HENRY BRADY, Co-Principal Investigator

Political Participation in the Soviet Union: Estonia and the RSFSR

National Science Foundation: NSF SES-9122389

TOTAL AWARDED: \$224,474 INDIRECT COSTS: \$51,543
2/1/92-1/31/94

By using a two stage sample drawn from ethnically diverse areas of the former Soviet Union, the influence of structural and cultural factors on the nature of mass-elite relations in the emergence of new political systems can be assessed. Respondents to a survey drawn from Estonia, Russian and the non-Russian Autonomous Republics of the RSFSR will be examined for the impact of ethnicity of political behavior during a period of economic and political change.

ROBERT KOEGEL, Principal Investigator

Research in Autism - Parent Intervention

National Institute of Mental Health: NIMH R01 MH28210

TOTAL AWARDED: \$104,830 INDIRECT COSTS: \$31,434

This is an ongoing project that is based on the hypothesis that the most productive parent training avenue for the treatment of autism will be one that involves the child as a major component in the treatment delivery. The research compares a control treatment of a typical parent training approach in which parents are taught to manage their children's behavior, with a new parent-training approach in which the parents are taught to include their child as a central part of the treatment delivery through self-management techniques.

ROBERT KOEGEL, Principal Investigator

Community-Referenced Technologies for Nonaversive Behavior

University of Oregon, Subcontract: OSE G00087C0234

TOTAL AWARDED: \$152,078 INDIRECT COSTS: \$19,836

This project, currently in its fifth year of funding, is continuing development of the research and training center to instruct families and students in management techniques for autistic children.

MICHAEL LOVE, Principal Investigator

BARBARA VOORHIES, Co-Principal Investigator

Archaeological Exploration of the Ujuxte Region, Pacific Guatemala

Heinz Charitable Trust: HEINZ/LOVE

TOTAL AWARDED: \$7,000 INDIRECT COSTS: -0-
2/1/92-12/91/92

Funds have been allocated to conduct a preliminary investigation of the site of Ujuxte, on the Pacific coast of Guatemala. The research will conduct an intensive survey of approximately 20 square kilometers surrounding the site of Ujuxte. The survey will determine the density of settlement in all periods, the types of sites, surface conditions,

and specific conditions of land tenure. A less intensive reconnaissance of approximately 100 square kilometers of territory surrounding Ujuxte will be made to assess the nature and conditions of roads, land tenure, types of crops to be encountered, and the annual cycles of these crops.

LORRAINE MCDONNELL, Principal Investigator

Assessment Policy and Education Policy

Department of Education/UCLA: R117G10027

TOTAL AWARDED: \$85,069 INDIRECT COSTS: \$26,130
12/1/91-11/30/92

As part of the previous work undertaken for CRESST, the principal investigator is examining the implementation of four state assessment initiatives in local schools and classrooms. This study focuses on the expectations that policymakers hold for different assessment strategies and the factors that shape local response to those initiatives.

LLOYD MERCER, Principal Investigator

DOUGLAS MORGAN, Co-principal Investigator

Proposal for Economic Studies for the Bay/Delta Hearings of the California Water Resources Control Board

California Water Resources Board: WRC 9-179-300.0

TOTAL AWARDED: \$235,000 INDIRECT COSTS: \$21,182
6/15/90-6/14/93

Actions taken by the California Water Resources Control Board which is considering revising the standards contained in the existing Water Quality Control Plan for the Sacramento-San Joaquin Delta and Suisun Marsh Plan will be evaluated for possible economic and financial impacts.

MARIANNE MITHUN, Principal Investigator

Barbareño Chumash Grammar

National Science Foundation: NSF BNS-9011018

TOTAL AWARDED: \$95,656 INDIRECT COSTS: \$24,371
11/30/90-10/31/92

The goal of this project is to prepare a functionally-based reference grammar of Barbareño Chumash. The research participants have organized manuscripts and have been entering them into a computer in a form that can be sorted by a concordance program, making it possible to extract all instances of morphemes in the corpus, in context, with literal and free translations. During the final year of the project, these studies will be worked into a comprehensive grammar of the Barbareño Chumash language.

HARVEY MOLOTCH, Principal Investigator

Growth Control: Inner Workings and External Effects

California Policy Seminar: CPS Molotch

TOTAL AWARDED: \$10,453 INDIRECT COSTS: -0-
7/1/89-6/30/92

Through a case study investigation of three Southern California urban areas (Santa Barbara, Santa Monica and Riverside), this research is investigating the degree to which existing growth controls actually curtail local development. By better understanding how growth control operates in different localities, State policy makers will be in able to encourage policies which optimize the distribution, scale, and quality of growth in California's future.

HARVEY MOLOTCH, Principal Investigator

RICHARD FLACKS, Co-Principal Investigator

Supporting the Troops: Media Treatment of Dissent in the Vietnam and Gulf Wars

Institute on Global Conflict and Cooperation: IGCC/Molotch-Flacks

TOTAL AWARDED: \$18,080 INDIRECT COSTS: -0-
7/1/91-6/30/92

The researchers have undertaken an assessment of how American troops were characterized by the anti-war movement during the Vietnam era, as compared with the media's treatment of troops participating in the Gulf War. The goal of this project is to analyze the ways in which the media have portrayed anti-war movement orientations toward the troops during the Vietnam and Gulf Wars and to compare the ways in which Vietnam era protests were portrayed contemporaneously and retrospectively.

LLAD PHILLIPS, Principal Investigator

HAROLD L. VOTEY, JR., Co-principal Investigator

Recidivism Criteria and the Determination of Best Policy: An Investigation of NIJ Data

National Institute of Justice: NIJ 90-IJ-CX-0041

TOTAL AWARDED: \$92,198 INDIRECT COSTS: \$29,049
7/16/90-7/15/92

The central focus of this project is to evaluate alternative criminal justice policies to reduce recidivism by analyzing an extensive data set generated by an earlier NIJ project. The data for three cities, Boston, Chicago and San Diego, have been used to examine how the choice of a criterion variable can affect decisions in regard to policies that may lead to substantial savings in the social costs of treating recidivists.

WADE CLARK ROOF, Principal Investigator

Biography and Faith: Two Supplemental Studies

Lilly Endowment Incorporated: LILLY 910575

TOTAL AWARDED: \$79,258 INDIRECT COSTS: \$7,176
9/1/91-12/31/92

This research is examining the "stories" of baby boomers (born from 1946-62) about their religious and spiritual lives. The research will focus on how the social experience of growing up in the 1960s influenced "baby boomers'" lives and if those experiences continue to shape their values, outlook, and a distinct generational experience.

JOHN SUTTON, Principal Investigator

The Dynamics of Denominationalism in American Protestantism, 1890-1980

Lilly Endowment Incorporated: LILLY 900123

TOTAL AWARDED: \$177,246 INDIRECT COSTS: \$14,771
6/1/90-6/30/92

The purpose of this project is to understand the patterns of denominationalism in American Protestantism from the period 1890 to 1990. The Principal Investigator is gathering a data set on the formation of American Protestant denominations by analyzing the life histories of 175 mainstream Protestant denominations. This information will specifically focus on schisms through which new denominations were created, and mergers, through which old denominations were dissolved. This quantitative life history data will be supplemented with contextual information about specific merger and schism events from archival and secondary sources.

JOHN SUTTON, Principal Investigator
The Dynamics of Denominationalism in America

National Science Foundation: SES-90008994

TOTAL AWARDED: \$41,629 INDIRECT COSTS: \$12,722
7/1/90-6/30/92

The funds from this grant have been used to develop an exceptionally detailed data set on the life histories of mainstream Protestant denominations as outlined above in the Lilly Foundation grant. The data set will be placed in a public archive which will be made available to other researchers at the end of the study period..

JOHN TOOBY, Principal Investigator
Presidential Young Investigator Award: Evolutionary Biology and & Human Psychological Adaptation

National Science Foundation: BNS-9157449

TOTAL AWARDED: \$25,000 INDIRECT COSTS: \$2,273

James S. McDonnell Foundation: *Matching Funds for PYI Award BNS9157449*

TOTAL AWARDED: \$37,500 INDIRECT COSTS: \$8,203
8/1/91-7/31/92 &

The research plan for this project will encompass the mapping of human cognitive mechanisms -- adaptive specializations-- through the application of cognitive experimental methods and cross-cultural studies to models of adaptive problems derived from evolutionary biology and paleoanthropology. Specific adaptive problems being investigated include cooperation, coalition formation, threat interpretation, bluff detection, probabilistic reasoning, incest avoidance, and contagion avoidance.

RONALD WILLIAMS, Principal Investigator
Maternal and Child Health Database (Renewal)
 California Department of Health: MCH 90-10485

TOTAL AWARDED: \$253,000 INDIRECT COSTS: \$17,500
7/1/91-6/30/92

Research on the Maternal and Child Health Database project , initiated in 1976, continues. Efforts will be concentrated on maintaining and augmenting the hospital specific MCH Database for California cities. An updated Maternal and Child Health Data Base Statistical Appendix and Descriptive Narrative will be made available at the end of the funding period.

RONALD WILLIAMS, Principal Investigator***AVSS Technical Assistance*****California Department of Health: CA HLTH 90-10213****TOTAL AWARDED: \$112,367 INDIRECT COSTS: \$29,132**
10/1/91-12/31/92

This is a renewal of a long term project to provide for the planning, implementing and operating of the Automated Vital Statistics System (AVSS) in California. AVSS is a software program designed to automate the registration of births and is currently being used in approximately 22 local registration districts. The research group is providing assistance to users in installing, updating and maintaining the software.

MAYFAIR YANG, Principal Investigator***Voluntary Associations and the Emergence of Civil Society in China*****National Science Foundation: NSF BNS-9057505****TOTAL AWARDED: \$50,083 INDIRECT COSTS: \$4,554**
8/15/90-7/31/92

This Presidential Young Investigator Award project is in its second year of funding. During this funding period, the Principal Investigator has been concentrating on two fieldsites and two fieldwork topics. The first topic has focused on the lineage organization and ritual revival in a rural town outside the city of Wenzhou, Zhejiang Province and the second on film criticism and reception among the masses in urban and rural Xi'an, Shaanxi Province.

PUBLICATIONS & PRESENTATIONS

APPELBAUM, Richard

Pacific Rim Research Program & The Haynes Foundation

Commodity Chains and Industrial Districts in the Pacific Rim: A Comparative Study of Three Industries

Publications:

"Commodity Chains and Industrial Restructuring in the Pacific Rim: Garment Trade and Manufacturing." In *Commodity Chains and Global Capitalism*, G. Gereffi & M. Korzeniewicz (eds.), Greenwood Press, forthcoming (with Brad Christerson).

"Points of Profit in the Garment Commodity Chain." In *The Apparel Industry in the Pacific Rim, Caribbean Basin, and Latin America*, E. Bonacich, & D. Waller (eds.), submitted to Temple University Press.

Presentations

"Points of Profit in the Garment Commodity Chain." Presented at the UCLA Center for Pacific Rim Studies Conference, May 15-18, 1992.

"Commodity Chains and Industrial Restructuring in the Pacific Rim: Garment Trade and Manufacturing." Presented at the Political Economy of the World Systems (PEWS) Conference, Duke University, April 1992 and at the Annual Urban and Regional Research Section of the International Sociological Association, May 24-26, UC Los Angeles.

APPELBAUM, Richard & BONACICH, EDNA

The Haynes Foundation

Garment Manufacturing in Los Angeles: Race Ethnicity, Immigration and Gender in a Changing Industry

Publications:

"Space and the Global Economy: How Forces of Dispersal and Concentration are Reshaping the Contemporary Los Angeles Garment Industry." In *Geographic Information Systems: A Handbook for the Social Sciences*, C. Earle, L. Hochbert, and D. Miller (eds.). Basil Blackwell: New York, forthcoming, 1992 (with Christopher G. Arnold).

BADASH, Lawrence

National Science Foundation Grant DIR90-12305

Tale of a Nuclear Winter

Presentations:

"The Politics of Nuclear Winter: When Should Government Act Upon Scientific Advice?" Presented at the Chancellor's Council, Santa Barbara, CA, November 6, 1991.

"Nuclear Weapons? National Security or Terrorists Threat?" Presentation sponsored by Labwatch and the Associated Students, UC Santa Barbara, November 21, 1991.

BOVE, Frederick

National Science Foundation Grant BNS-9108926

State Evolution in the South Coast of Guatemala

Publications

"Terminal Formative and Early Classic Traditions of Pacific Coastal Guatemala." In *Chemical Characterization of Ceramic Pastes in Archaeology*, H. Neff (ed.), pp 189-202. Monographs in World Archaeology No. 7, Prehistory Press, Madison, 1992 (with H. Neff., B. L. Lou, and W. Medrano.)

"Ceramic Raw Materials Survey in Pacific Coastal Guatemala." In *Chemical Characterization of Ceramic Pastes in Archaeology*, H. Neff (ed.), pp. 59-84. Monographs in World Archaeology No. 7, Prehistory Press, Madison, 1992 (with H. Neff., B. L. Lou, and Piechowski.)

"La Evolución Cultural de los Estados Tempranos en la Costa Sur de Guatemala: Ideas y Evidencias." *Utz'ib*, vol. 1, no. 2, Asociación Tikal, Guatemala City.

Presentations

Análisis Composicional de la Cerámica Clásico Temprano de la Costa Pacifica." Quinta Simposio Sobre Investigaciones Arqueológicas de Guatemala, July 1991 (with H. Neff, and B. Lou).

BIELBY, Denise & BIELBY, William

National Science Foundation Grant SES-8910039

From Market to Hierarchy: Industrial Change and the Employment Relation in Television Production

Publications:

"Cumulative Disadvantage in an Unstructured labor Market: Gender Differences in the Careers of Television Writers." *Work and Occupations*, 1992, forthcoming.. Denise Bielby and William Bielby.

"Reach Out and Touch Someone: Viewers, Agency, and Audiences in the Televisual Experience." In G. Miller & J.A. Holstein (eds.), *Perspectives on Social Problems*, vol. 3, Greenwich, CT: Jai Press. Denise Bielby and C. L. Harrington.

"Public Meanings, Private Screenings: The Formation of Social Bonds Through the Televisual Experience." In G. Mioller and J. A. Holstein (eds.), *Perspectives on Social Problems*, vol. 3, Greenwich, CT: Jai Press. Denise Bielby and C. L. Harrington.

"I Will Follow Him: Family Ties, Gender-Role Beliefs, and Reluctance to Relocate for a Better Job." *American Journal of Sociology*, Vol. 96, No. 5., March 1992.

Presentations:

"Older Writers' Participation in Television Production." Presented at the Gerontological Society of America, San Francisco, November 1991. Denise Bielby and William Bielby.

"Tried and True is Dead and Buried: Gender, Institutionalized Decision-Making and Claims to Uniqueness in Prime Time Television." Presented at the American Sociological Association, Cincinnati, Ohio, 1992. Denise Bielby and William Bielby.

BORJAS, George AND TREJO, Stephen

Alfred P. Sloan Foundation Grant

Immigrants and Welfare

Publications

"Immigrant Participation in the Welfare System" *Industrial and Labor Relations Review*, vol. 44, no. 2, January 1991, pp. 195-211. George Borjas & Steve Trejo.

"Immigrant Welfare Reciprocity: Recent Trends and Future Implications" *Contemporary Policy Issues*, vol. 10, no. 2, April 1992, pp. 44-53. Steve Trejo.

"National Origin and Immigrant Welfare Reciprocity." *Journal of Public Economics*, forthcoming. George Borjas & Steve Trejo.

Presentations

"Immigrant Welfare Reciprocity: Recent Trends and Future Implications," Western Economics Association meetings, Seattle, July 1991

CLANCY, Patricia

Spencer Foundation Grant

The Specialization of Affect in Japanese and Korean Children

Presentations:

"The Socialization of Affect in Japanese Mother-Child Interaction." Presented at the International Conference on Social Psychology, UC Santa Barbara, August 18-23, 1991.

DEACON, Robert

National Science Foundation Grant SES-9121859

Political Stability, Security of Tenure, and Natural Resource Conservation in Developing Countries

Publications

"Controlling Tropical Deforestation: An Analysis of Alternative Policies", Working Paper, Public Economics Department, The World Bank, forthcoming 1992.

"The Structure of an Environmental Transaction: The Debt-for-Nature Swap", The North American Free Trade Agreement: An Economic Analysis." Book chapter; T.A. Anderson (ed.), forthcoming 1993.

Presentations

"Controlling Tropical Deforestation: An Analysis of Alternative Policies", The World Bank, Washington, D.C., April 1992. Seminar Presentation:

"Controlling Tropical Deforestation: An Analysis of Alternative Policies." European Association of Environmental and Resource Economists, Annual Meeting, Krakow, Poland, June 1992.

FORD, Anabel

Council for International Exchange of Scholars: CIES Ford 6/91CIES4

Maya Ceramic Workshop

Publications:

"Review and Revision of Ceramic Analysis: Results of the 1991 Maya Ceramic Workshop. *Ceramica de Cultura Maya*, 16:24-29, 1992 (with N. Woodman and L. Lucero).

FORD, Anabel

National Science Foundation Grant #BNS-9024104

Maya Development in the Upper Belize River Valley

Publications:

"Prehistoric Maya Settlement Patterns in the Upper Belize River Area: Initial Results of the Belize River Archaeological Settlement Survey. *Journal of Field Archaeology* 19:35-49, 1992 (with S. Fedick).

"Problems with the Evaluation of Population from Settlement Data: Examination of Ancient Maya Residence Patterns in the Tikal-Yaxha Intersite Area." *Estudios de Cultural Maya* 18:157-186, 1991.

"Evidence of Economic Variation of Ancient Maya Residential Settlement in the Upper Belize River Area.
Ancient Mesoamerica 2:35-45, 1991.

Presentations:

"Residential Land Use, Social Status, and Consumption: The Methodological Foundation for the Second Phase of the Belize River Archaeological Settlement Survey." Presented at the 56th Annual Meetings of the Society for American Archaeology, New Orleans, LA, 1991.

FUKUI, Haruhiro & DITTMER, Lowell

Pacific Rim Research Grant

Informal Politics, Democracy, and Patterns of Economic Development in China, Japan, South Korea and Taiwan.

Publications:

Informal Aspects of Electoral Politics in Japan." In *Elections and Campaigning in Japan, Korea, and Taiwan: Toward a Theory of Embedded Institutions*, B. Grofman, S-C Lee and E. Winckler (eds.), forthcoming. H. Fukui & S.N. Fukai).

Presentations:

"Diet Elections and Election Campaigns, in Japan: Case Studies." Presented at the Workshops on the Pacific Rim, UC Irvine, February 23, 1992. H. Fukui and S. N. Fukai.

"Informal Politics and Leadership Change in the People's Republic of China." Presented by Lowell Dittmer, at the Informal Politics of Leadership Recruitment in East Asia 44th Annual Meetings of the Association for Asian Studies, Washington, D.C. April 1992.

"Regional Bases and Patterns of Informal Politics in South Korea." Presented by Soohyun Chon, at the Informal Politics of Leadership Recruitment in East Asia 44th Annual Meetings of the Association for Asian Studies, Washington, D.C. April 1992.

"Election Campaigning in Contemporary Japan." Presented by Shigeko Fukai and Haruhiro Fukui, at the Informal Politics of Leadership Recruitment in East Asia 44th Annual Meetings of the Association for Asian Studies, Washington, D.C. April 1992..

"Political Decontrol and the Emergence of Informal Politics in Taiwan." Presented by Tun--jen Cheng, at the Informal Politics of Leadership Recruitment in East Asia 44th Annual Meetings of the Association for Asian Studies, Washington, D.C. April 1992.

INGHAM, Roger

National Institute of Health Grant PHS 5 R01 DC00060

Time Interval Investigations of Stuttering Measurement

Presentations:

"On Valid and Reliable Identification of Normal Disfluencies and Stuttering Disfluencies and Stuttering Disfluencies: A Response to Aram, Myers, and Ekelman (1990)." *Brain and Language* 40, 282-286, 1991.(with A. K. Cordes & M. Gow).

"Experimental Analysis and Evolution of a Stuttering Therapy." *Seminars in Speech and Language*, 12, 336-348, 1991.

"Time Interval Analysis of Interjudge and Intrajudge Agreement for Stuttering Event Judgments." *Journal of Speech and Hearing Research*, 35, 483-494, 1992 (with A. Cordes, P. Frank and J. Ingham).

"Reliability of Speech Naturalness Ratings of Stutterers' Speech During Therapy." *Journal of Speech and Hearing Research*, in press (with M. Linslow, R. Adams).

"The Neuropsychology of Stuttering: Are There Implications for Clinical Management?" In *The Neuropsychology of Stuttering*, E. Boberg (ed.), Edmonton: University of Alberta Press, in press.

"Interclinic Differences in Stuttering Event Counts: Further Evidence." *Journal of Fluency Disorders*, in press (with A. Cordes).

"Time-interval Measurement of Stuttering: Modifying Interjudge Agreement." *Journal of Speech and Hearing Research*, in press (with A. Cordes, and M. Gow).

"Time-interval Measurement of Stuttering During Audio and Audiovisual Judgment Conditions." *Journal of Speech and Hearing Research*, in press (with A. Cordes and M. Gow).

KAPLAN, Cynthia

National Science Foundation Grant SES-9122389

Political Participation in the Soviet Union: Estonia and the RSFSR

Presentations

"Nationalism, Ethnic Divisions, and Political Participation in Estonia," Paper delivered at the Midwest Political Science Association Annual Meeting, Palmer House, Chicago, IL April 11, 1992. (with Henry E. Brady).

KOEGEL, Robert

National Institute of Mental Health Grant R01 MH28210

Research in Autisms: Parent Intervention

Publications:

"Using Self-Monitoring to Increase Students' Success and Independence." *Teaching Exceptional Children*, 23, 17-22, 1991 (with L.K. Dunlap, G. Dunlap, & L. K. Koegel).

"Assessing and Training Parents in Teaching Pivotal Behavior." In R. Prinz (ed.), *Advances in Behavioral Assessment of Children and Families*. London: Jessica Kingsley Publishers, Ltd., 1991 (with L. K. Koegel & L. Schreibman).

"Positive Affect of Parents of Autistic Children: A Comparison Across Two Teaching Techniques." *Behavior Therapy* 22, 479-490, 1991 (with L. Schreibman, & W. Kaneko).

How To Teach Self-Management to People with Severe Disabilities: A Training Manual. Santa Barbara: University of California, 1992 (with L. K. Koegel, & D. R. Parks).

"Improving Social Skills and Disruptive Behavior in Children with Autism through Self-Management." *Journal of Applied Behavior Analysis*, 25, 341-353, 1992 (with. K. Koegel, C. Hurley, and W. D. Frea).

"Language Intervention and Disruptive Behavior in Preschool Children with Autism." *Journal of Autism and Developmental Disorders*, 22, 141-153, 1992 (with L. K. Koegel, & A. V. Surratt).

"Consistent Stress Profiles in Mothers of Children with Autism." *Journal of Autism and Developmental Disorders*, 1992 (with L. Schreibman, L. Loos, H. Dirlich-Wilhelm, G. Dunlap, F. R. Robbins, & A. J. Plienis).

Increasing Success in School through Priming: A Training Manual. Santa Barbara: University of California (with L. Wilde & L. K. Koegel).

"Aggression and Non-compliance: Behavior Modification Through Naturalistic Language Remediation." In J. L. Matson (ed.), *Autism in Children and Adults: Etiology, Assessment, and Intervention*. Sycamore, IL: Sycamore Press, in press (with S. Camarata, and L. K. Koegel).

"Autism: A Discussion from a Social Communication Perspective." In V. Van Hasselt & M. Hersen (eds.), *Advanced Abnormal Psychology*. New York: Plenum Publishing Co., in press (with L. K. Koegel, & M. Valdez-Menchaca).

"Self-Management as a Strategy for Modifying Problem Behavior." In E. Schopler and G. Mesibov (eds.), *Assessment and management of Behavior Problems in Autism*. New York: Plenum Press, in press (with W. D. Frea & A. V. Surratt).

LOVE, Michael & VOORHIES, Barbara

Heinz Charitable Trust

Archaeological Exploration of the Ujuxte Region, Pacific, Guatemala.

Publications:

Ceramic Chronology and Chronometric Dating: Stratigraphy and Seriation at La Blanca, Guatemala. *Ancient Mesoamerica* 3, 1992. Michael Love.

MITHUN, Marianne

National Science Foundation Grant BNS90-11018

Barbareño Chumash Grammar

Publications:

"Typology and Deep Genetic Relations in North America." In *Comparative Linguistics*, E. Polmé, (ed.). DeGruyter: Berlin, in press.

Typological Survey Handbook of North American Indians, Vol. 17. Smithsonian Institute: Washington, DC, in press.

Presentations:

"Patterns of Expression in North American Indian Languages: What They Tell Us About Human Communicative Capacity." Presented at the Lansdowne Lecture, University of Victoria, British Columbia, 1992.

"The Barbareño Chumash Database at UCSB." Talk given by Tsuyoshi Ono, Santa Barbara Museum of Natural History, June 1992.

"Reduplication in Barbareño Chumash. Paper given by Suzanne Wash, Hoka-Penutian Conference, Santa Barbara Museum of Natural History, June 1992.

MOLOTCH, Harvey

CPS/Molotch

Growth Control: Inner Workings and External Effects

Publications:

"Urban Deals in Comparative Perspective:." In *Beyond the City Limits*, J. Logan and T. Swanstrom (eds.). Philadelphia, PA: Temple University Press, 175-198, 1990.

Growth Control, Inner Workings and External Effects. Berkeley, CA: California Policy Seminar, 1992 (with Kee Warner). Also issued in summary form as SPC Brief: "Growth Control: Inner Workings and External Effects." *California Policy Seminar*, vol. 4, no. 7, August 1992.

"Who's Giving to Whom? An Analysis of Local Campaign Contributions and Competing Development Interests in Santa Barbara, California." MA Thesis of Amy Lategola, Department of Sociology, University of California, Santa Barbara, June 1992.

"Reforming the Growth Machine: Urban Growth Control and Practice." Ph.D. Dissertation of Kee Warner, Department of Sociology, University of California, Santa Barbara, CA.

Presentations:

"Regulating Urban Growth: Gains, Losses, and No Effect. Presented at the Annual Meetings of the American Sociological Association, Pittsburgh, PA, August 20-24, 1992 (with Kee Warner).

"The Dynamics of Growth Control in Southern California. Presented at the Meetings of the Section on Urban and Regional Research, International Association, Los Angeles, CA, 1992 (with Kee Warner).

"The Consequences of Growth Control." Presented at the Annual Meetings of California Studies Association, Sacramento, CA, February 6-9, 1992.

"What the New Urban Europe Can Learn from the Old Urban American." Presented at the Meetings of the Consiglio Italiano per Le Scienze Sociali, Milan, Italy, October 25-26, 1992.

"The Political Economy of Growth Machines." Presented at the Annual Meetings of the American Political Science Association, Washington, D.C., August 1991.

"The Impacts of Growth Control." Presented at the Meetings of the International Institute for Sociology, Kobe, Japan, August 24-29, 1991 (with Kee Warner).

"Growth Management in Three Areas: Use and Exchange Values in Political Practice." Presented at the Annual Meetings of the Western Political Science Association, Newport Beach, CA, 1991 (with Kee Warner).

MOLOTCH, Harvey & FLACKS, Richard

IGCC/Molotch/Flacks

Supporting the Troops: Media Treatment of Dissent in the Vietnam and Gulf Wars

Publications:

"Supporting the Troops: Media Treatment of Dissent in the Viet Nam and Gulf Wars." MA Thesis of Tom Beamish, Department of Sociology, University of California, Santa Barbara, CA.

PHILLIPS, Llad & VOTEY, Harold J. Jr.

NIJ Grant 90-IJ-CX-00419

Recidivism Criteria and the Determination of Best Policy: An Investigation of NII Data

Publications:

"Changing Age Structure and Crime Rates Revisited." Submitted for publication. Llad Phillips & Harold L. Votey, Jr.,

"Demographics and Trends in Crime, a Failed Hypothesis." Submitted for publication. Llad Phillips & Harold L. Votey, Jr.

Presentations:

"Demographics and Trends in Crime." Presented to the Western Economic Association International Annual Meetings, Seattle, WA, July 1991. Llad Phillips & Harold L. Votey, Jr.

"Economic Opportunity, Deterrence, and Trends in Arrest Rates by Age and Race." Presented at WHOA International Annual Meetings, Seattle, WA, July 1991. Llad Phillips & Harold L. Votey, Jr.

TOOBY, John

NSF Grant BBS BNS-9157449 & James S. McDonnell Foundation Grant

Presidential Young Investigator Award: Evolutionary Biology and Human Psychological Adaptation and McDonnell Matching Funds to NSF PYI Award

Publications:

The Adapted Mind: Evolutionary Psychology and the Generation of Culture. J. Barkow, L. Cosmides, & J. Tooby (eds.), New York: Oxford University Press, 1992.

"Evolutionary Psychology and Conceptual Integration." In *The Adapted Mind: Evolutionary Psychology and the Generation of Culture.* J. Barkow, L. Cosmides, & J. Tooby (eds.), New York: Oxford University Press, 1992 (with L. Cosmides, and J. Barkow).

"The Psychological Foundations of Culture." In *The Adapted Mind: Evolutionary Psychology and the Generation of Culture.* J. Barkow, L. Cosmides, & J. Tooby (eds.), New York: Oxford University Press, 1992 (with L. Cosmides).

"Cognitive Adaptations for Social Exchange." In *The Adapted Mind: Evolutionary Psychology and the Generation of Culture.* J. Barkow, L. Cosmides, & J. Tooby (eds.), New York: Oxford University Press, 1992 (with L. Cosmides).

"From Evolution to Adaptations to Behavior: Toward an Integrated Evolutionary Psychology." In R. Wong (ed.), *Biological Perspectives on Motivated and Cognitive Activities.* Norwood, New Jersey: Ablex, in press (with L. Cosmides).

"The Origins of Domain-Specificity: The Evolution of Functional Organization." In L. Hirschfeld & S. Gelman (eds.), *Domain-Specificity in Cognition and Culture..* Cambridge: Cambridge University Press: in press.

"Are Humans Good Intuitive Statisticians After All? Rethinking Some Conclusions of the Literature on Judgment Under Uncertainty." In review (with L. Cosmides).

Presentations

"Ecological Rationality: The Fit Between Reasoning Specializations and the Ecological Structure of Ancestral Environments." Presentation at the Society for Philosophy and Psychology, San Francisco, August 1991.

"Two Peoples Separated by a Common Language: Misunderstandings Between Biologists and Social Scientists." Presented at the Opening Conference, Biological Foundations of Culture, Zentrum für interdisziplinäre Forschung, Universität Bielefeld, Germany, October 1991.

"Task Analysis for Primate Social Cognition." Presented at the Social Intelligence Seminar, Biological Foundations of Culture, Zentrum für Interdisziplinäre Forschung, Universität Bielefeld, Germany, October 1991.

"Emotion and Cognition in Evolutionary Perspective." Presented at the Social Intelligence Seminar, Biological Foundations of Culture, Zentrum für Interdisziplinäre Forschung, Universität Bielefeld, Germany, October 1991.

"The Psychological Foundations of Culture." Presented at the Fellows' Seminar, Biological Foundations of Culture, Zentrum für interdisziplinäre Forschung, Universität Bielefeld, Germany, November 1991.

WILLIAMS, Ron

California Dept. of Health Grant #MCH 91-12638

Maternal and Child Health Data Base

Publications:

1984-1988 Maternal and Child Health Data Base Descriptive Narrative. Community and Organization Research Institute, University of California, Santa Barbara, December 1991.

YANG, Mayfair

National Science Foundation Grant BNS 9057505

Voluntary Associations and the Emergence of Civil Society in China

Publications:

"Rural Enterprises and the Question of their Development" ("Xiangzhen giye de zuoyong yu fazhan wenti") in *Geography and Territorial Research (Dilizue yu guotu yanjiu)* vol. 7, no. 1, 1991. (with Wang Guoqing and Jiang Dehua).

"Une histoire du present: Gouvernement rituel et gouvernement d'Etat dans la Chine ancienne." *Annales*, no. 5, Sept-Oct 1991.

Guanzize: The Ethics and Politics of Gift Relations in Contemporary China. Book manuscript submitted to Cornell University Press.

Presentations

"The Re-Invention of a Lineage in Wenzhou, China." Center for Psychosocial Studies, Chicago, July 1991.

"Relationships, Networks and Civil Society in China." Center for Chinese Studies, UC Berkeley, October 4-5, 1991. Panel organizer and discussant.

"Guanxi, Networks, & Civil Society in China." American Anthropological Association Meetings, Chicago, November 1991.

"Gender Talk and Mass Media in China." Anthropology Department, UC Berkeley, April 23, 1992.

"Border Crossings: Ethnic, National and Anthropological." After Orientalism Conference, UC Berkeley, April 24-25, 1992.

"Film Criticism Among the Masses: State Discourse or Civil Society?" Third International Asian Film Conference, New York University, June 11-13, 1992.

CORI PERSONNEL 1991-1992

PI/AGENCY	GSRs-Assistants (Graduate Students)	Assistants (Undergraduates)	Other
APPELBAUM Pacific Rim	Scott, Greg Christerson, Brad		
APPELBAUM/BONACICH Haynes Foundation	Arnold, Chris Gilbert, Jean Scott, Greg Waller, David		Hanneman, Pat Grande, Alba
BORJAS/TREJO Sloan Fnd	Eide, Eric		
BIELBY NSF	Valasco, Steve		
CLANCY Spencer Fnd		Jung, Chiyon	
COMANOR UERG	Riddle, Jon		
CORI General Funds		Thompson, Shar Yin, Luu	
CORI Special Projects-Votey		Brown, Rosminah	
CORI Special Projects-Lerner		Ortega, Diane	
CORI Special Projects Pister Conference		Koed, Betty Zenheiser, Keith	
DEACON NSF	Murphy, Paul		
FORD NSF/90-91	Goza, Petanera	Hundt, Anne Tillage, Charles	Cosselman, S.
FORD NSF/91-92		Wheeler, Susan	
FUKUI Pac Rim	Heiman, E. Murphy, Paul Sakamoto, T.		
GRAHAM FIRE GIFT	Gomes, Daniel Marshall, E. Schmidt, A.		
INGHAM PHS	Cordes, Ann Gow, Merrilyn		Frank, Peter
JOCHIM NSF	Maschner, Herb	Sawyer, Izaak	

CORI PERSONNEL 1991-1992

PI/AGENCY	GSRs-Assistants (Graduate Students)	Assistants (Undergraduates)	Other
KOEGEL NIMH	Freya, William Hurley, Christine Wilde, Laura		Koegel, Lyn Rohdin_Bibby, G.
KOEGEL OSE	Freya, William Hurley, Christine Wilde, Laura	Hulit, Roberta Lizerbaum, Jeff	Koegel, Lyn Rohdin_Bibby, G.
MCDONNELL DOE	McGinnis, Mike		Oleske, Doris
MERCER/MORGAN WRC Board	Bieneman, David Lu, Zhong		
MITHUN NSF	Ono, Tsuyoshi Wash, Suzanne		
MOLOTCH Calif. Growth Proj.	Warner, Kee	Lategola, Amy White, Carolyn	
MOLOTCH/FLACKS IGCC	Beamish, Tom		
PHILLIPS/VOTEY NIJ	Lu, Zhong Khanal, Suman		
ROOF Lilly Fnd			Greer, Bruce Johnson, Mary
SUTTON Lilly Fnd	Feher, Shoshana Grattett, Ryken Wheeler, Britta		
TOOBY NSF	Patton, John Sugiyama, Larry Sugiyama, Michelle		
TOOBY McDonnell Fnd	Thompson, Barty Sugiyama, Larry Sugiyama, Michelle		
WILLIAMS AVSS Royalty			Chen, Peter Kluss, Julie Marinko, John Wroblewski, R.
WILLIAMS MCH			Chen, Peter Kluss, Julie Marinko, John Wroblewski, R.
YANG NSF	Lu, Mei-Huan Kang, Xiaopei		

CORE BUDGET (as of 6/30/91)	FTE	CORE BUDGET	EXPENSE AMOUNT
Academic Salaries			
Director	0.40	37,550.00	10,013.00 *
Stipend		4,200.00	4,200.00
Other			
Staff Salaries	3.00	81,084.00	77,107.00 **
General Assistance		6,989.00	12,645.00 ***
Employee Benefits		35,117.00	35,117.00
Supplies & Expense		25,936.00	21,068.00 #
Other - Discretionary Funds		15,000.00	32,356.00 ##
TOTAL CORE FTE 1991-92	3.40		
SUB-TOTAL CORE BUDGET 1991/92		205,876.00	
Temporary Sub 2 Augmentation	0.50	8,034.00	
Budgetary Savings Target		-2,875.00	
Temporary Relief from OR		1,438.00	
*Director Sabbatical, return excess to VCAA		-27,537.00	
Trnsfrs fr subs 2,3 & 7 to cover sub 9 deficit		-5,009.00	
TOTAL CORE BUDGET 1991/92		179,927.00	
TOTAL EXPENDITURES FOR 1990-91			192,506.00

**Includes slry. svngs. fr vacant Pr. Clk., Jul.-Sept.

***Includes add'l 25% for Jacobson & Dandona

#Includes reimbursements for copying costs

##Includes expds. fr rsrch. cmmts. fr prior yrs.

RECHARGE/INCOME ACCOUNT	ACTUAL INCOME	ACTUAL EXPENSE
Academic Salaries		
Staff Salaries		
General Assistance		
S&E		
Benefits		
Other		
TOTAL RECHARGE REVENUE	51.00	
TOTAL RECHARGE EXPENSES		

SALES OF PUBLICATIONS

INTRAMURAL FUNDING*

		INCOME AMOUNT	EXPENSE AMOUNT
R. Appelbaum	Office of Research	1,250.00	1,250.00
A. Ford	Office of Research	500.00	500.00
C. Tillage	Office of Research	2,000.00	2,000.00
G. Humphreys	Carnegie-Mellon	11,250.00	10,805.00
TOTAL INTRAMURAL FUNDING/EXPENDITURES		15,000.00	14,555.00

OTHER INCOME (Specify source & use)

TOTAL AMOUNT OF SUPPORT FUNDS FOR THE YEAR	<u>194,927.00</u>	
TOTAL EXPENDITURES FOR THE YEAR		<u>207,061.00</u>

*Include all temporary funds such as Research Committee Awards, OR seed or matching funds, Chancellor's Discretionary, Affirmative Action allocations, etc..
 Please do not include funds which were processed by Contracts and Grants

1991/92 INCOME/EXPENSE FOR Community & Organization Research Institute

**MATCHING FUNDS FOR CONTRACTS AND GRANTS IN ORU
 ALLOCATED TO ACADEMIC DEPARTMENTS**

FOR: PERSON/PROJECT	SOURCE OF FUNDS	INCOME AMOUNT	EXPENSE AMOUNT
A. Ford/NSF Project	IHC	5,400.00	0.00
TOTAL MATCHING FUNDS PLACED OUTSIDE ORU		<u>5,400.00</u>	<u>0.00</u>

1 Academic personnel engaged in research:	
a. Faculty	31
b. Professional Researchers	8
c. Specialists	4
d. Postdoctorals	
e. Postgraduate Researchers	
TOTAL	
2 Graduate Students:	
a. Employed on contracts and grants	39
b. Employed on other sources of funds	
c. Participating through assistantships	
d. Participating through traineeships	
e. Other (specify)	
TOTAL	
3 Undergraduate Students:	
a. Employed on contracts and grants	13
b. Employed on other funds	2
c. number of volunteers, & unpaid interns	
TOTAL	
d. Average number of hours/week of student assistance	12
4 Participation from outside UCSB:	
a. Academics	6
b. Postdoctorals	
c. Postgraduate Researchers	
d. Other - Staff Research Associates	4
5 Staff (Univ. & Non-Univ. Funds):	
a. Technical	10
b. Administrative/Clerical	11
6 Publications	
7 Seminars, symposia, workshops sponsored	17
8 Proposals submitted	60
9 Number of different awarding agencies dealt with*	29
10 Number of extramural awards administered	40
11 Dollar value of extramural awards administered during year**	3,053,461.00
12 Number of Principal Investigators***	66
13 Dollar value of other project awards****	279,426.00
14 Number of other projects administered	16
15 Total base budget for the year (as of June 30)	179,927.00
16 Dollar value of Intramural support	33,792.00
17 Total assigned square footage in ORU	7,063

*Count each agency only once (include agencies to which proposals have been submitted).

**If the award was open during the year, even if for only one month, please include in total.

***Number of PIs, Co-PIs and Proposed PIs (Count each person only once).

****Other projects-such as donations, presidential awards, fellowships;
anything that isn't core budget, extramural, or intramural.

CORI SPACE ALLOCATION
1991 - 1992

Rm 2202 Sq ft = 250 Cmptr./ Strg.	Copy Room
Room 2204 Sq ft = 250 Williams AVSS/MCH	
Room 2206 Sq ft = 360 CONFERENCE ROOM (Pellish Room)	
Room 2208 Sq ft = 439 Conference Room	

Room 2201 Sq ft = 237	2201B Sq ft = 93
CORI Admin. Offices	
Rm 2205 Sq ft=124	Rm2201A Sq ft=124
Econ. Rcrtmt.	CORI Admin.
Room 2207 Sq ft = 264 Williams AVSS/MCH	
Room 2209 Key 1008 Sq ft = 439 Williams AVSS/MCH McDonnell DOE Phillips NIJ	
Rm 2213 Sq ft=175	2213C Sf=130
Loomis et. al. PHS	2213B Sf=130
2213A Sf=89	Kanayama

Room 1013 Sq ft = 158 Votey NIJ
Rm 1015 Sq ft=158 Phillips NIJ
Room 1017 Sq ft = 158 Owen-Facility for Rsrch and Acctg. Educ.

North Hall
Total Rooms = 17
Total Sq ft = 3578

Rm 2704 Sq ft = 143 Sutton NSF/Lilly Fdn
Rm 5805 Sq ft = 119 Kaplan NSF

Ellison Hall
Total Rooms = 2
Total Sq ft = 262

CORI SPACE ALLOCATION
1991 - 1992

Rm 1306 Sq. ft = 199 Appelbaum Pac Rim/Haynes
Rm 1308 Sq. ft = 203 Conference Room
Rm1310A Rm 1310 Sq ft=100 Sq ft=100 Storage Copy Room
Rm 1312 Sq ft = 203 MARC O'Connor Voorhies
Rm 1314 Sq ft = 203 MARC Ford NSF
Rm 1316 Sq fr = 203 MARC Ford Lab
Rm 1318 Sq ft = 203 Humphreys
Rm 1320 Sq ft = 203 Ford NSF
Rm 1322 Sq ft = 199 Ho/Zimmer Pac Rim

Rm 1307 Sq. ft = 138 Retzinger
Rm 1309 Sq ft = 141 Thompson
Rm 1311 Sq ft = 141 Bielby NSF
Rm 1313 Sq ft = 141 Computer Rm
Rm 1315 Sq ft = 141 Mithun NSF
Rm 1317 Sq ft =141 Roof Lilly Fdn
Rm 1319 Sq ft = 141 Mead UERG
Rm 1321 Sq ft = 141 Molotch CPS
Rm 1323 Algebra Institute Sq ft = 141
Rm 1325 Algebra Institute Sq ft = 141

Girvetz Hall
Total Rooms = 20
Total Sq ft = 3223

10/24/91
00:28

FDX: FACILITIES INVENTORY
SELF-AUDIT OF SPACE USE

FDXSP010
PAGE 211

PROGRAM: 2.1.30.0.0 OR MUL/INTERDST

SPACE STANDARD: NONSTD

DEPT: COM ORG INST

ROOM NUMBER	ROOM CODE	ROOM TYPE	S/N	ASF	STATIONS	GRANT
-------------	-----------	-----------	-----	-----	----------	-------

BUILDING: ELLISON HALL CAAN: 8563

2704	310	ACAD OFF	S	143	1	0063
5805	310	ACAD OFF	S	119	1	0063

2 ROOMS TOTALS: 262 2

BUILDING: GIRVETZ HALL CAAN: 8564

1306	211	RESRCH OFC	S	199	2	
1307	211	RESRCH OFC	S	138	3	
1308	340	CONFERENCE	S	203	15	
1309	211	RESRCH OFC	S	141	2	
1310	335	OFFICE SRV	S	100	0	
1310A	722	STORAGE-OF	S	100	3	
1311	211	RESRCH OFC	S	141	2	
1312	211	OTHER OFF	S	203	2	
1313	210	RESEARCH	S	141	6	
1314	211	OTHER OFF	S	203	2	
1315	211	RESRCH OFC	S	141	3	
1316	225	RSCH LABSV	S	203	0	
1317	211	RESRCH OFC	S	141	1	
1318	211	RESRCH OFC	S	203	7	
1319	211	RESRCH OFC	S	141	2	
1320	211	RESRCH OFC	S	203	4	
1321	211	RESRCH OFC	S	141	4	
1322	211	RESRCH OFC	S	199	3	

10/24/91
00:28

FDX: FACILITIES INVENTORY
SELF-AUDIT OF SPACE USE

FDXSP010
PAGE 212

PROGRAM: 2.1.30.0.0 OR MUL/INTERDST

SPACE STANDARD: NONSTD

DEPT: COM ORG INST

ROOM NUMBER	ROOM CODE	ROOM TYPE	S/N	ASF	STATIONS	GRANT
1323	210	RESEARCH	S	141	3	
1325	210	RESEARCH	S	141	3	
20 ROOMS TOTALS:				3223	67	

BUILDING: NORTH HALL CAAN: 8535

1013	211 211	340 340	ACAD OFF	S	158	2
1015	211 211	340 340	ACAD OFF	S	158	2
1017	211 211	340 340	ACAD OFF	S	158	2
2201	320	OTHER OFF	S	237	2	
2201A	320 320	340 340	ACAD OFF	S	124	3
2201B	320	OTHER OFF	S	93	1	
2202	320	OTHER OFF	S	250	1	
2204	211 211	340 340	OTHER OFF	S	250	1
2205	211 211	340 340	ACAD OFF	S	124	1
2206	340	CONFERENCE	S	360	10	
2207	211 211	340 340	OTHER OFF	S	264	2
2208	340	CONFERENCE	S	439	12	
2209	211 211	340 340	ACAD OFF	S	439	7
2213	210	RESEARCH	S	175	10	
2213A	211	RESRCH OFC	S	89	1	
2213B	211	RESRCH OFC	S	130	2	
2213C	211	RESRCH OFC	S	130	2	
17 ROOMS TOTALS:				3578	61	